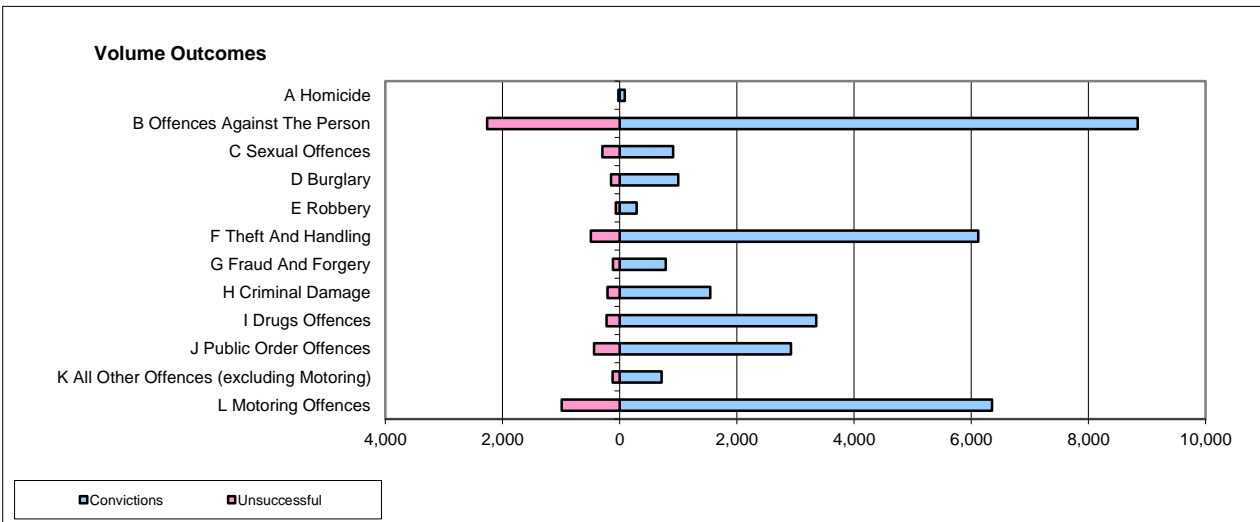
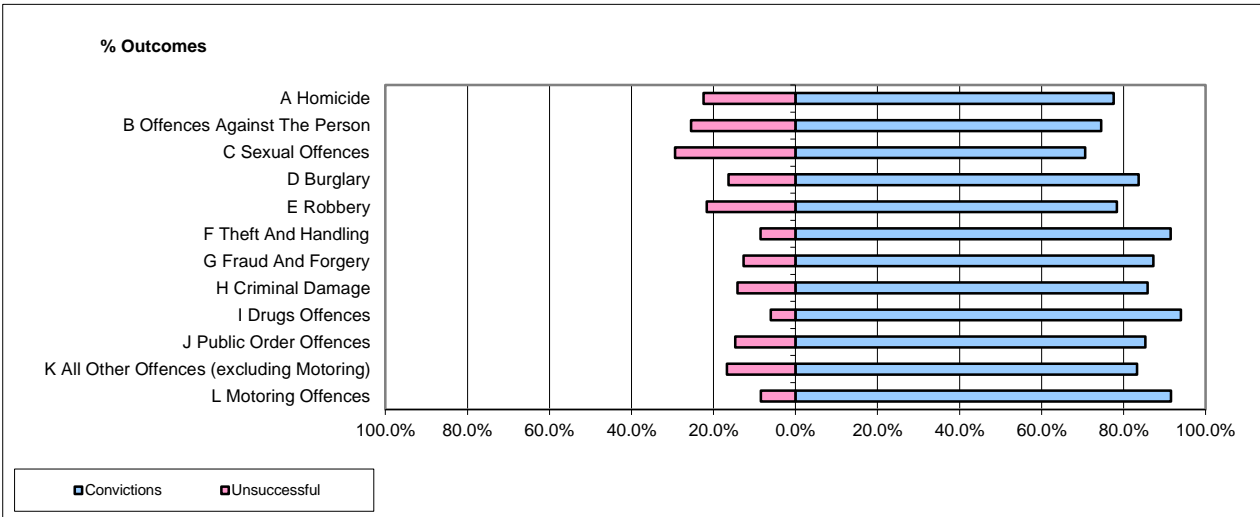


CPS OUTCOMES BY PRINCIPAL OFFENCE CATEGORY

Apr-17

National



	Convictions		Unsuccessful	
	Number of Defendants	%	Number of Defendants	%
A Homicide	87	77.0%	26	23.0%
B Offences Against The Person	8,841	79.6%	2,262	20.4%
C Sexual Offences	913	75.5%	296	24.5%
D Burglary	996	86.9%	150	13.1%
E Robbery	290	81.7%	65	18.3%
F Theft And Handling	6,121	92.6%	491	7.4%
G Fraud And Forgery	784	87.0%	117	13.0%
H Criminal Damage	1,545	87.9%	212	12.1%
I Drugs Offences	3,356	93.7%	226	6.3%
J Public Order Offences	2,920	86.9%	441	13.1%
K All Other Offences (excluding Motoring)	716	85.5%	121	14.5%
L Motoring Offences	6,355	86.5%	989	13.5%
Admin Finalisations	0	0.0%	802	100.0%
TOTAL	32,924	84.2%	6,198	15.8%

Please note that these data do not include Casework Divisions.