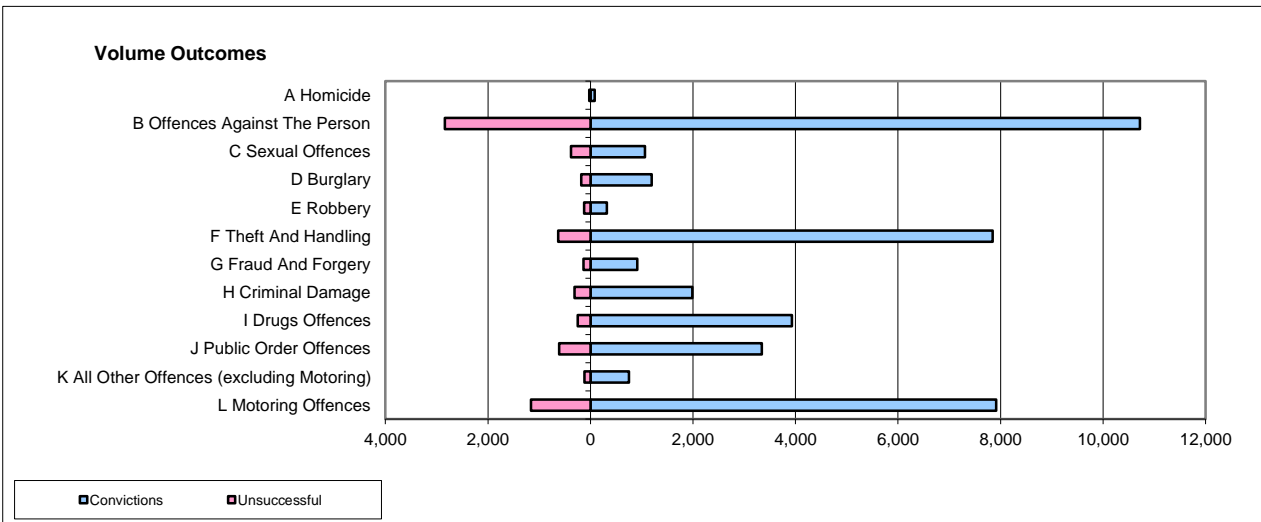
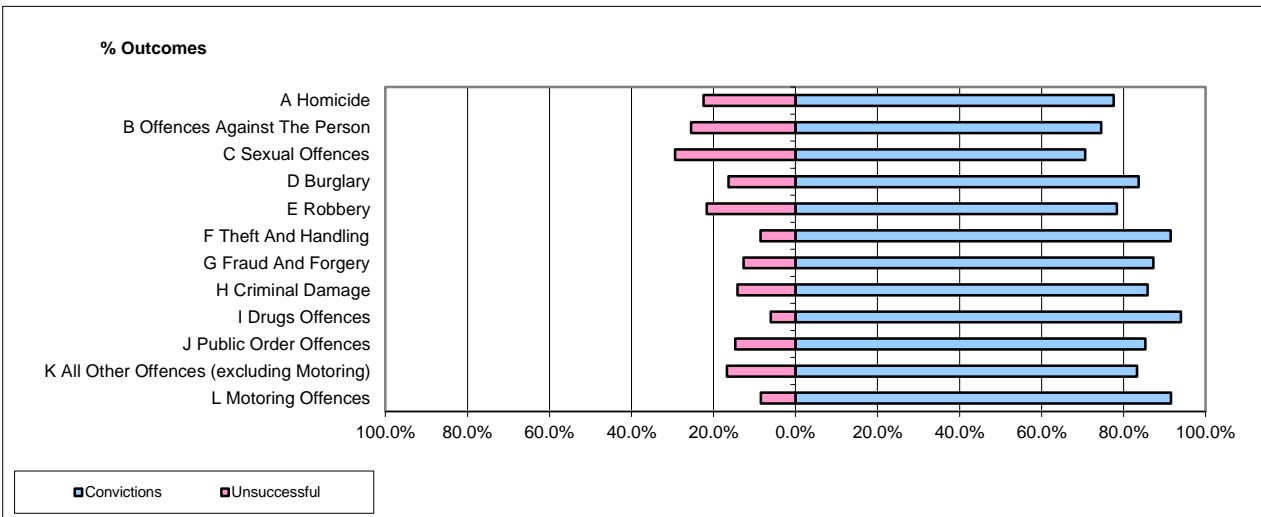


## CPS OUTCOMES BY PRINCIPAL OFFENCE CATEGORY

Jan-17

### National



	Convictions		Unsuccessful	
	Number of Defendants	%	Number of Defendants	%
A Homicide	83	79.8%	21	20.2%
B Offences Against The Person	10,719	79.0%	2,844	21.0%
C Sexual Offences	1,060	73.5%	382	26.5%
D Burglary	1,192	86.9%	179	13.1%
E Robbery	317	71.6%	126	28.4%
F Theft And Handling	7,846	92.6%	630	7.4%
G Fraud And Forgery	914	86.9%	138	13.1%
H Criminal Damage	1,985	86.5%	310	13.5%
I Drugs Offences	3,930	94.1%	247	5.9%
J Public Order Offences	3,344	84.5%	612	15.5%
K All Other Offences (excluding Motoring)	749	86.5%	117	13.5%
L Motoring Offences	7,913	87.2%	1,158	12.8%
Admin Finalisations	0	0.0%	822	100.0%
<b>TOTAL</b>	<b>40,052</b>	<b>84.1%</b>	<b>7,586</b>	<b>15.9%</b>

Please note that these data do not include Casework Divisions.