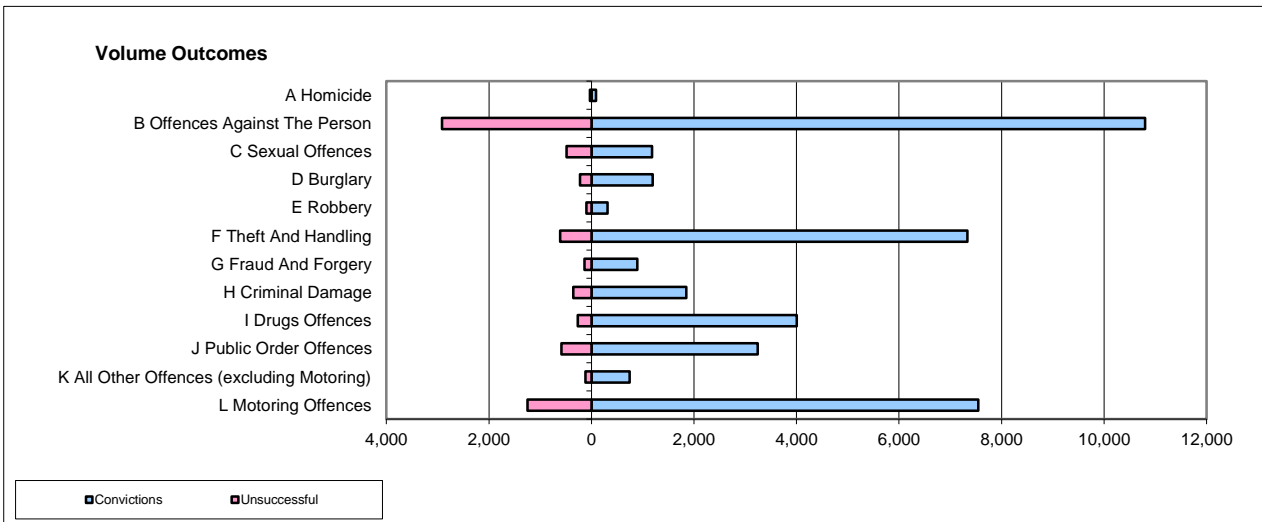
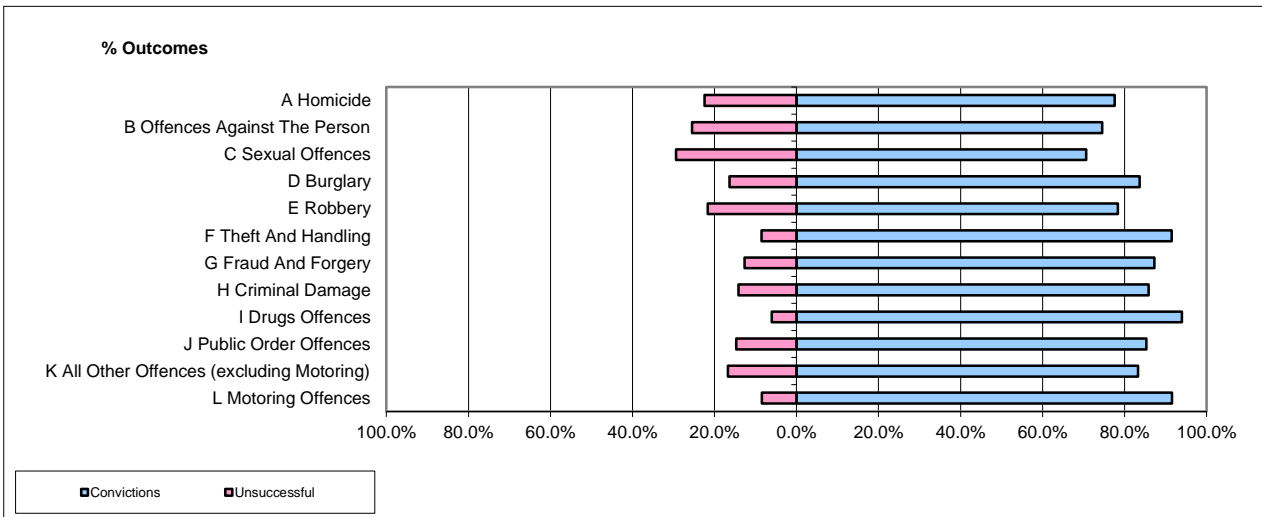


CPS OUTCOMES BY PRINCIPAL OFFENCE CATEGORY

Nov-16

National



	Convictions		Unsuccessful	
	Number of Defendants	%	Number of Defendants	%
A Homicide	89	74.8%	30	25.2%
B Offences Against The Person	10,803	78.7%	2,918	21.3%
C Sexual Offences	1,179	70.7%	489	29.3%
D Burglary	1,197	84.1%	226	15.9%
E Robbery	315	76.5%	97	23.5%
F Theft And Handling	7,334	92.3%	612	7.7%
G Fraud And Forgery	895	86.7%	137	13.3%
H Criminal Damage	1,851	84.0%	353	16.0%
I Drugs Offences	4,007	93.7%	270	6.3%
J Public Order Offences	3,245	84.7%	584	15.3%
K All Other Offences (excluding Motoring)	747	86.2%	120	13.8%
L Motoring Offences	7,547	85.8%	1,250	14.2%
Admin Finalisations	0	0.0%	838	100.0%
TOTAL	39,209	83.2%	7,924	16.8%

Please note that these data do not include Casework Divisions.