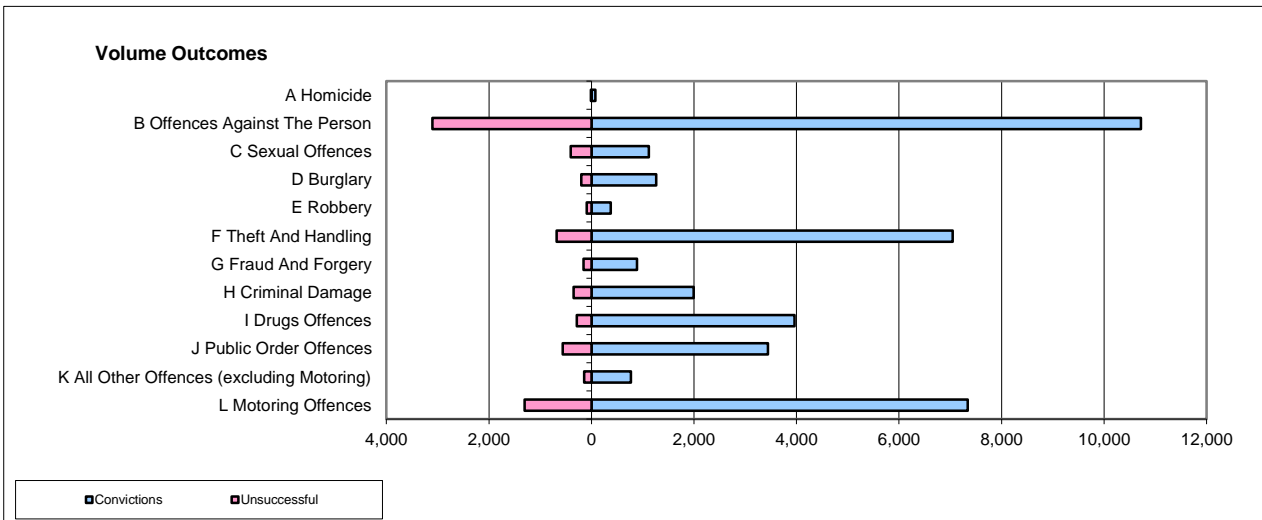
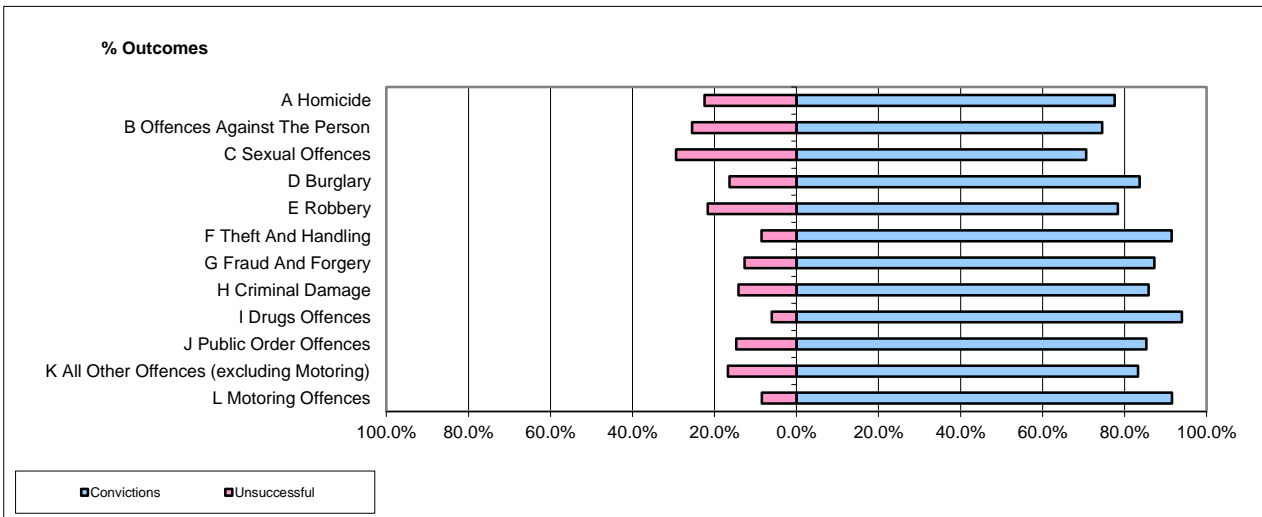


CPS OUTCOMES BY PRINCIPAL OFFENCE CATEGORY

Sep-16

National



	Convictions		Unsuccessful	
	Number of Defendants	%	Number of Defendants	%
A Homicide	73	89.0%	9	11.0%
B Offences Against The Person	10,720	77.6%	3,101	22.4%
C Sexual Offences	1,118	73.3%	408	26.7%
D Burglary	1,265	86.4%	199	13.6%
E Robbery	376	80.2%	93	19.8%
F Theft And Handling	7,047	91.2%	682	8.8%
G Fraud And Forgery	887	85.3%	153	14.7%
H Criminal Damage	1,995	85.1%	348	14.9%
I Drugs Offences	3,964	93.3%	284	6.7%
J Public Order Offences	3,443	86.0%	562	14.0%
K All Other Offences (excluding Motoring)	771	84.3%	144	15.7%
L Motoring Offences	7,341	84.9%	1,305	15.1%
Admin Finalisations	0	0.0%	849	100.0%
TOTAL	39,000	82.7%	8,137	17.3%

Please note that these data do not include Casework Divisions.