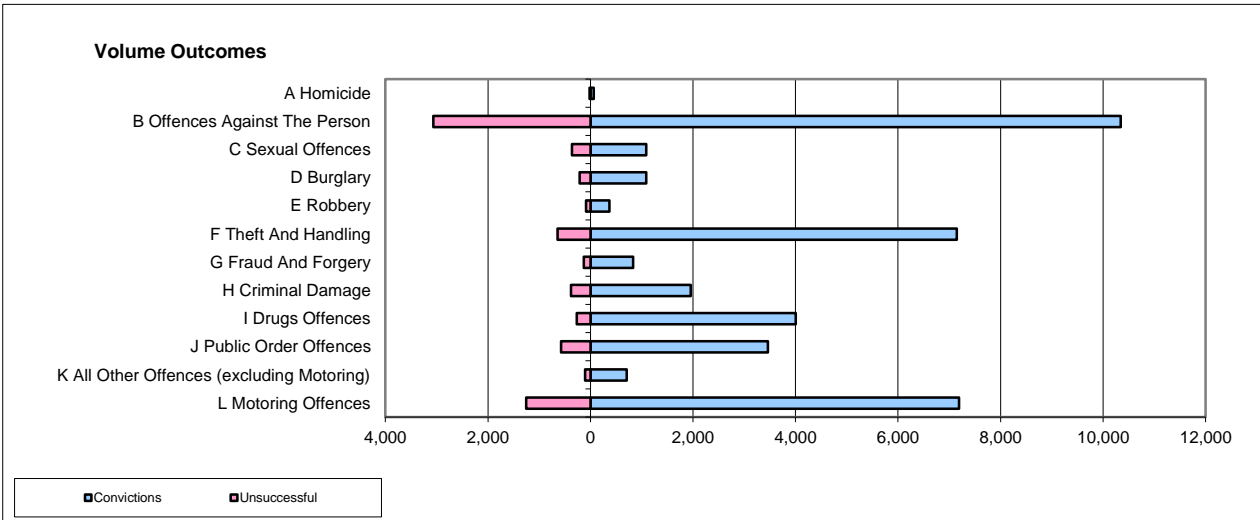
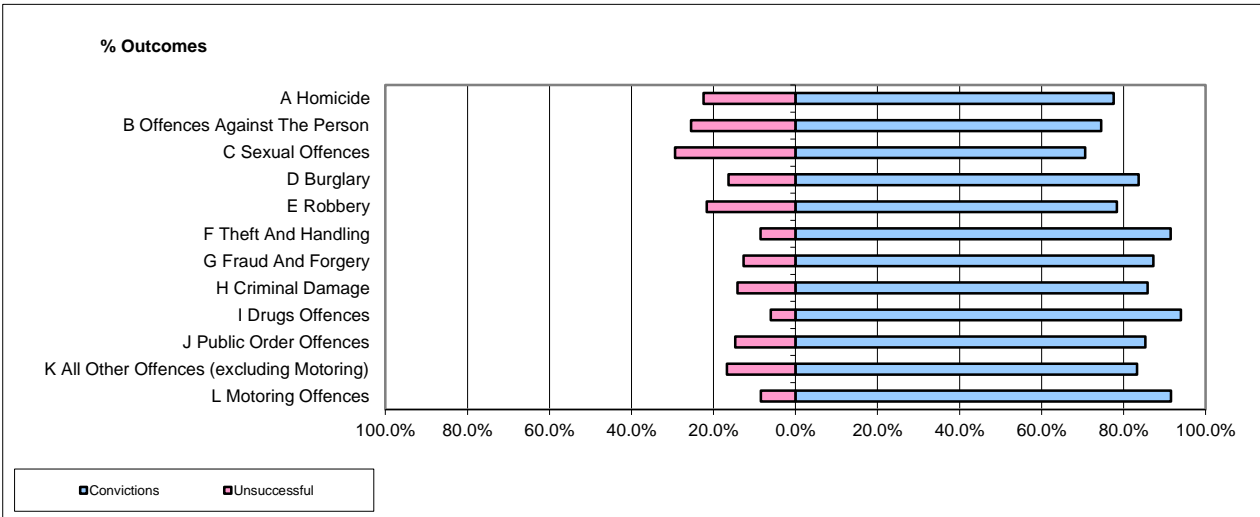


CPS OUTCOMES BY PRINCIPAL OFFENCE CATEGORY

Aug-16

National



	Convictions		Unsuccessful	
	Number of Defendants	%	Number of Defendants	%
A Homicide	63	80.8%	15	19.2%
B Offences Against The Person	10,343	77.1%	3,064	22.9%
C Sexual Offences	1,088	75.0%	362	25.0%
D Burglary	1,086	83.9%	209	16.1%
E Robbery	367	80.7%	88	19.3%
F Theft And Handling	7,147	91.8%	640	8.2%
G Fraud And Forgery	832	86.4%	131	13.6%
H Criminal Damage	1,955	83.7%	381	16.3%
I Drugs Offences	4,006	93.8%	267	6.2%
J Public Order Offences	3,463	85.7%	576	14.3%
K All Other Offences (excluding Motoring)	707	87.2%	104	12.8%
L Motoring Offences	7,192	85.2%	1,252	14.8%
Admin Finalisations	0	0.0%	771	100.0%
TOTAL	38,249	83.0%	7,860	17.0%

Please note that these data do not include Casework Divisions.