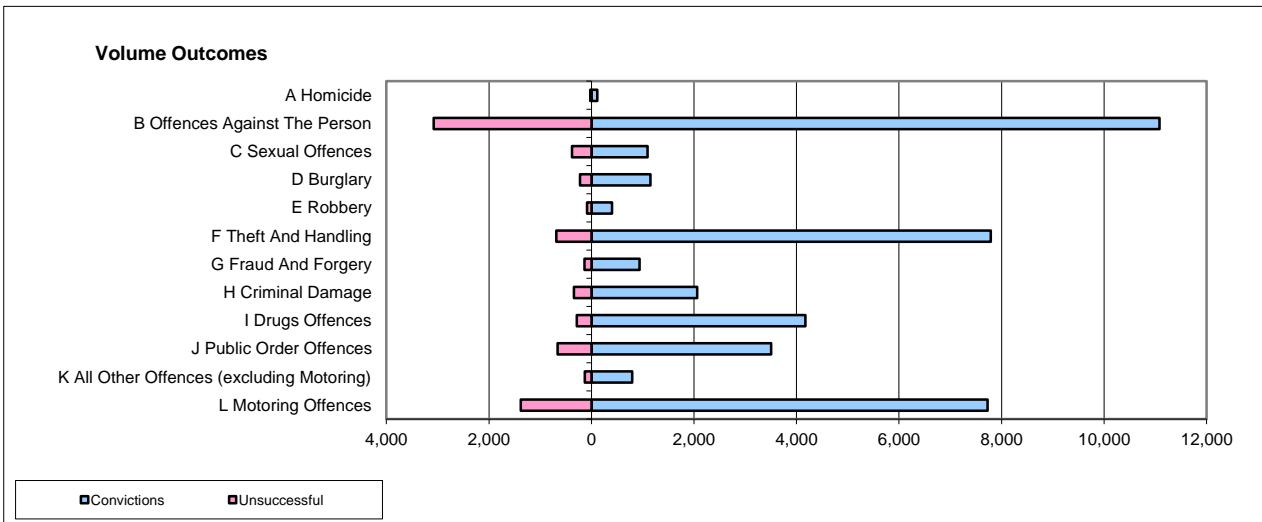
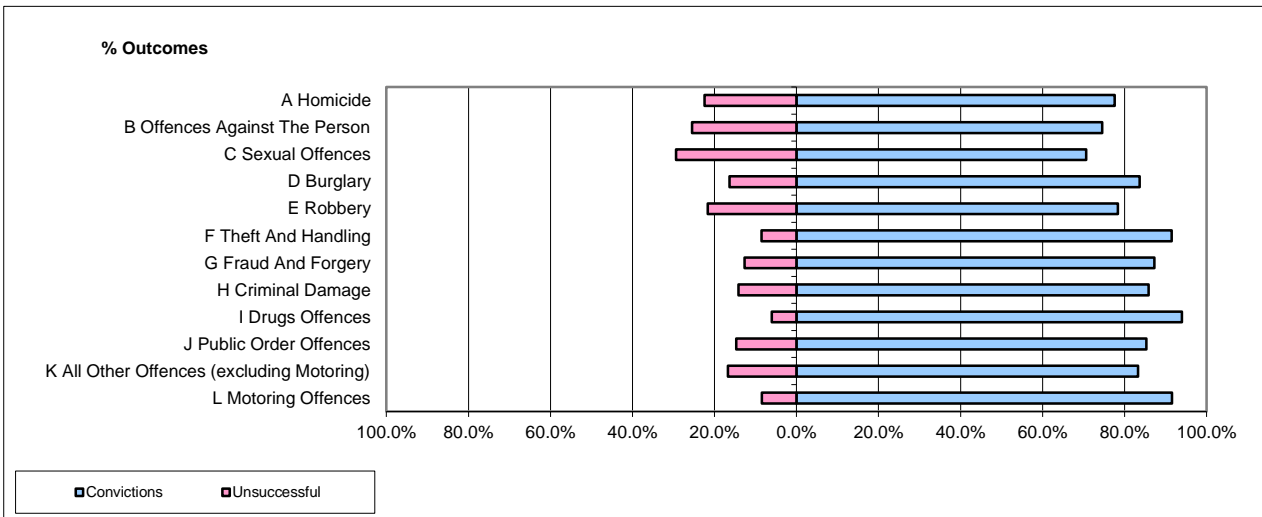


CPS OUTCOMES BY PRINCIPAL OFFENCE CATEGORY

Jun-16

National



	Convictions		Unsuccessful	
	Number of Defendants	%	Number of Defendants	%
A Homicide	112	84.2%	21	15.8%
B Offences Against The Person	11,080	78.2%	3,080	21.8%
C Sexual Offences	1,091	74.2%	380	25.8%
D Burglary	1,152	83.7%	224	16.3%
E Robbery	398	82.2%	86	17.8%
F Theft And Handling	7,790	91.9%	688	8.1%
G Fraud And Forgery	939	87.3%	137	12.7%
H Criminal Damage	2,061	85.7%	343	14.3%
I Drugs Offences	4,173	93.6%	284	6.4%
J Public Order Offences	3,508	84.2%	659	15.8%
K All Other Offences (excluding Motoring)	793	86.0%	129	14.0%
L Motoring Offences	7,729	84.8%	1,381	15.2%
Admin Finalisations	0	0.0%	770	100.0%
TOTAL	40,826	83.3%	8,182	16.7%

Please note that these data do not include Casework Divisions.