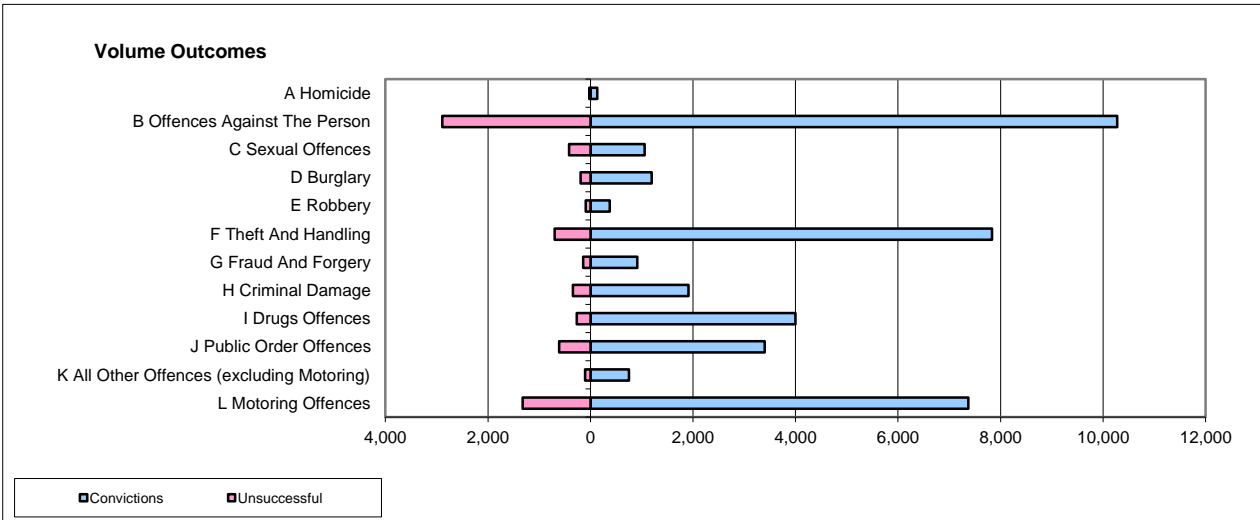
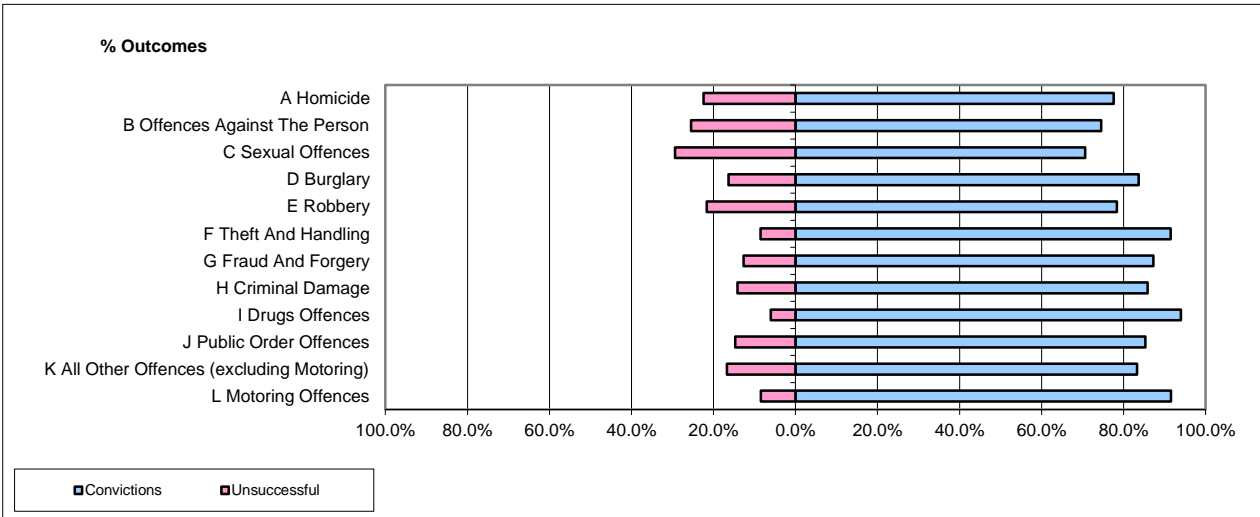


**CPS OUTCOMES BY PRINCIPAL OFFENCE CATEGORY**

**May-16**

**National**



	Convictions		Unsuccessful	
	Number of Defendants	%	Number of Defendants	%
<b>A Homicide</b>	131	82.9%	27	17.1%
<b>B Offences Against The Person</b>	10,276	78.0%	2,892	22.0%
<b>C Sexual Offences</b>	1,057	71.8%	415	28.2%
<b>D Burglary</b>	1,193	86.0%	194	14.0%
<b>E Robbery</b>	374	80.6%	90	19.4%
<b>F Theft And Handling</b>	7,831	91.8%	701	8.2%
<b>G Fraud And Forgery</b>	915	86.6%	142	13.4%
<b>H Criminal Damage</b>	1,913	84.8%	344	15.2%
<b>I Drugs Offences</b>	4,000	93.8%	265	6.2%
<b>J Public Order Offences</b>	3,400	84.7%	612	15.3%
<b>K All Other Offences (excluding Motoring)</b>	752	87.5%	107	12.5%
<b>L Motoring Offences</b>	7,371	84.8%	1,320	15.2%
<b>Admin Finalisations</b>	0	0.0%	720	100.0%
<b>TOTAL</b>	<b>39,213</b>	<b>83.4%</b>	<b>7,829</b>	<b>16.6%</b>

Please note that these data do not include Casework Divisions.