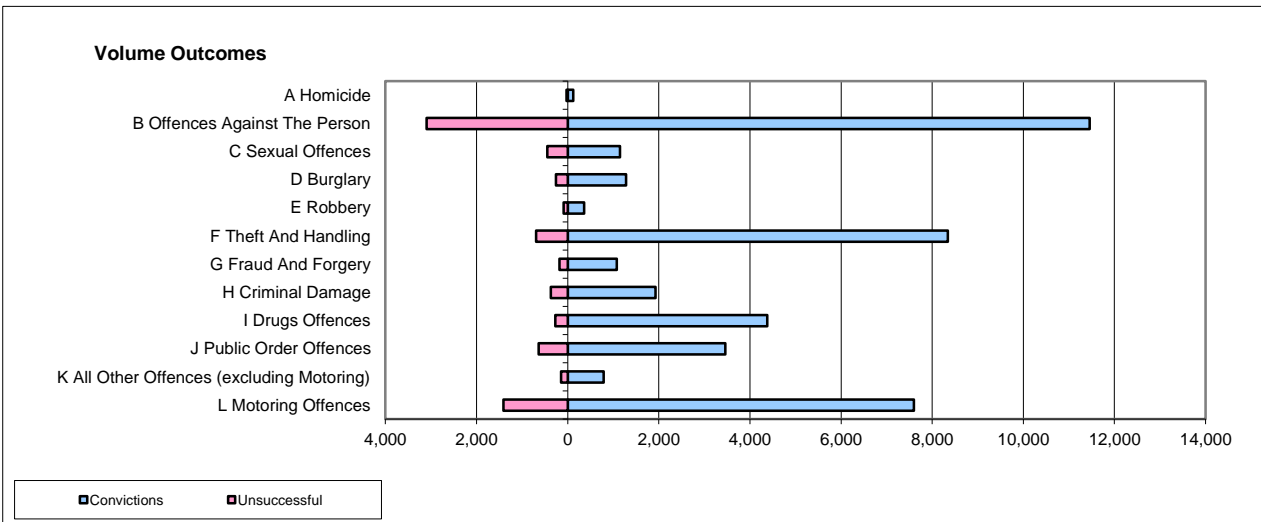
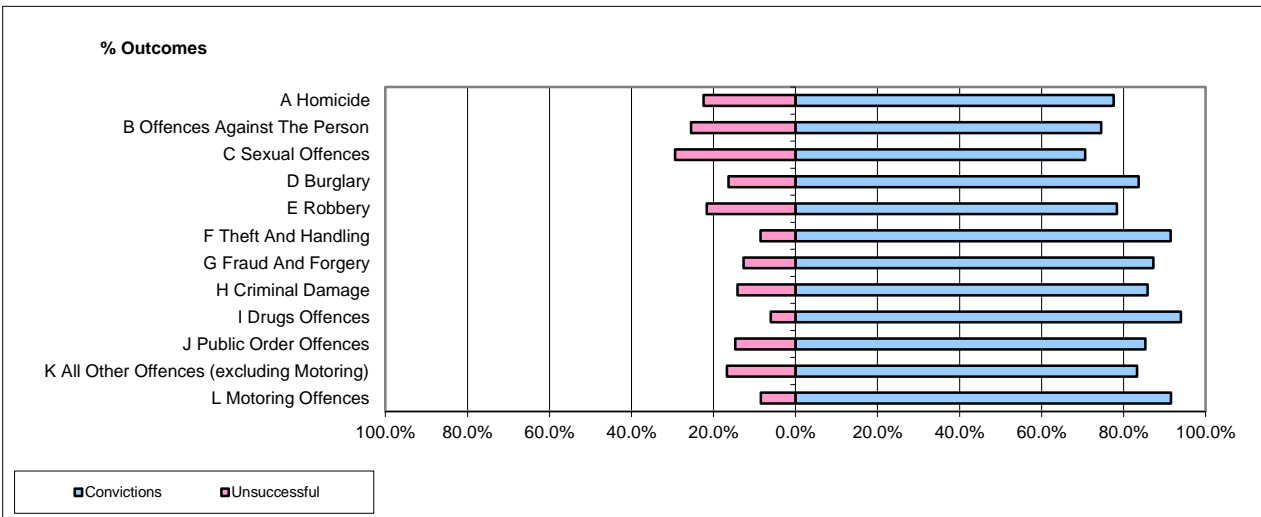


CPS OUTCOMES BY PRINCIPAL OFFENCE CATEGORY

Apr-16

National



	Convictions		Unsuccessful	
	Number of Defendants	%	Number of Defendants	%
A Homicide	125	83.3%	25	16.7%
B Offences Against The Person	11,455	78.7%	3,097	21.3%
C Sexual Offences	1,149	72.0%	447	28.0%
D Burglary	1,278	83.3%	256	16.7%
E Robbery	359	80.7%	86	19.3%
F Theft And Handling	8,346	92.4%	690	7.6%
G Fraud And Forgery	1,075	85.7%	180	14.3%
H Criminal Damage	1,925	83.9%	370	16.1%
I Drugs Offences	4,383	94.2%	271	5.8%
J Public Order Offences	3,458	84.4%	638	15.6%
K All Other Offences (excluding Motoring)	787	84.4%	145	15.6%
L Motoring Offences	7,598	84.3%	1,412	15.7%
Admin Finalisations	0	0.0%	740	100.0%
TOTAL	41,938	83.4%	8,357	16.6%

Please note that these data do not include Casework Divisions.