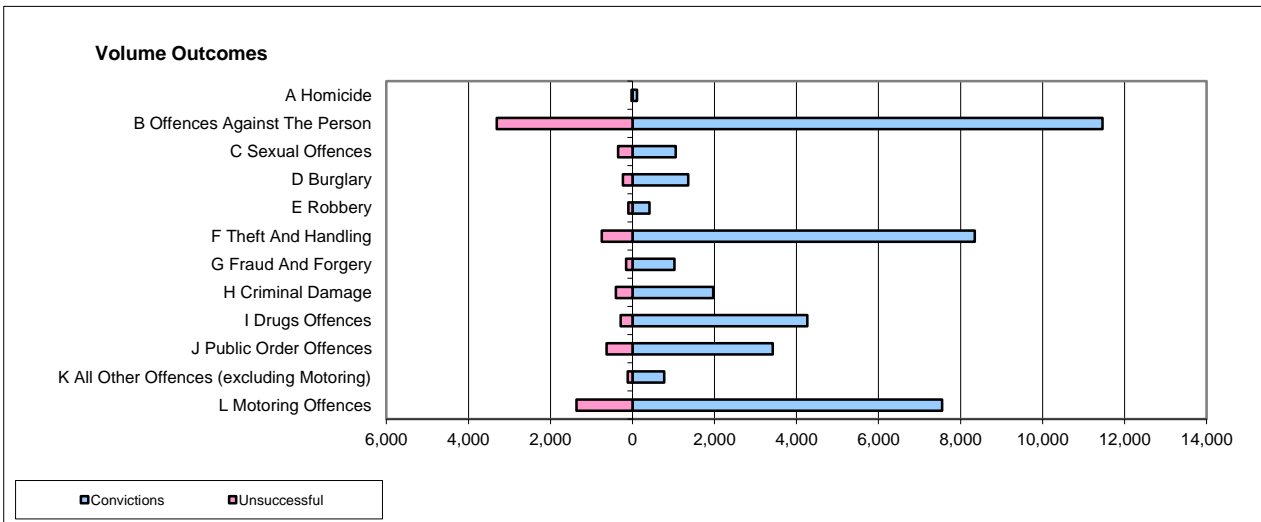
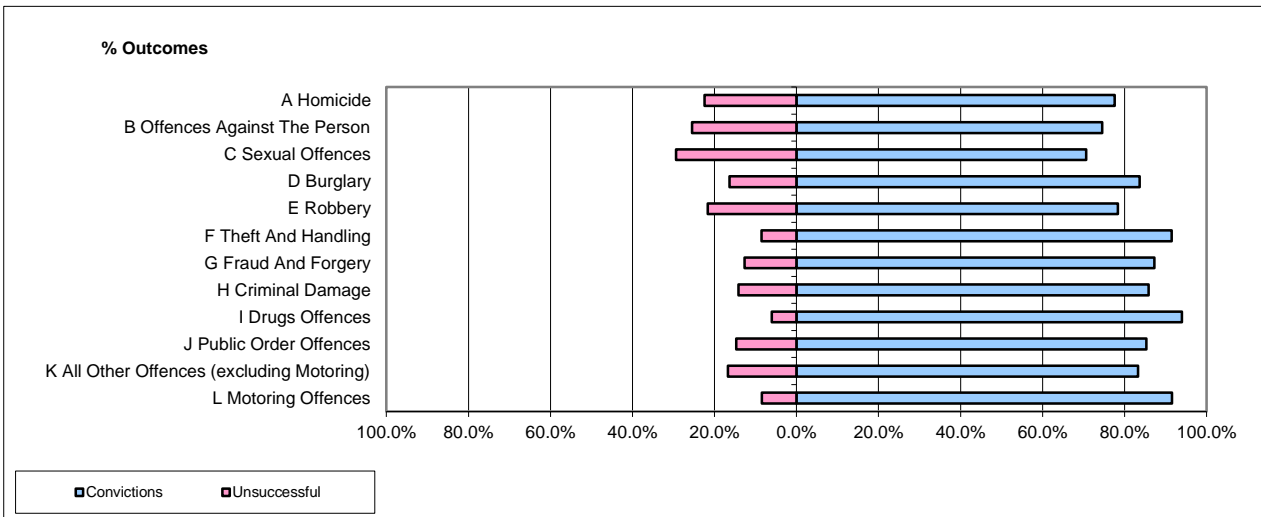


CPS OUTCOMES BY PRINCIPAL OFFENCE CATEGORY

Mar-16

National



	Convictions		Unsuccessful	
	Number of Defendants	%	Number of Defendants	%
A Homicide	108	82.4%	23	17.6%
B Offences Against The Person	11,459	77.6%	3,313	22.4%
C Sexual Offences	1,056	74.9%	353	25.1%
D Burglary	1,362	85.4%	233	14.6%
E Robbery	412	80.5%	100	19.5%
F Theft And Handling	8,349	91.8%	746	8.2%
G Fraud And Forgery	1,022	87.0%	153	13.0%
H Criminal Damage	1,966	83.0%	402	17.0%
I Drugs Offences	4,266	93.6%	292	6.4%
J Public Order Offences	3,420	84.4%	631	15.6%
K All Other Offences (excluding Motoring)	773	86.8%	118	13.2%
L Motoring Offences	7,547	84.7%	1,367	15.3%
Admin Finalisations	0	0.0%	658	100.0%
TOTAL	41,740	83.3%	8,389	16.7%

Please note that these data do not include Casework Divisions.