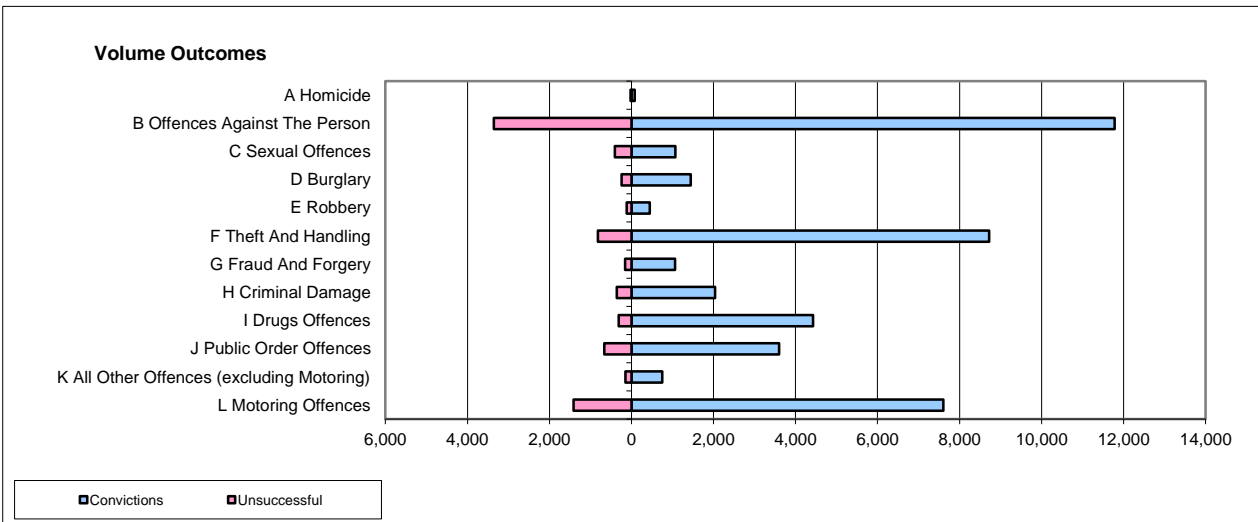
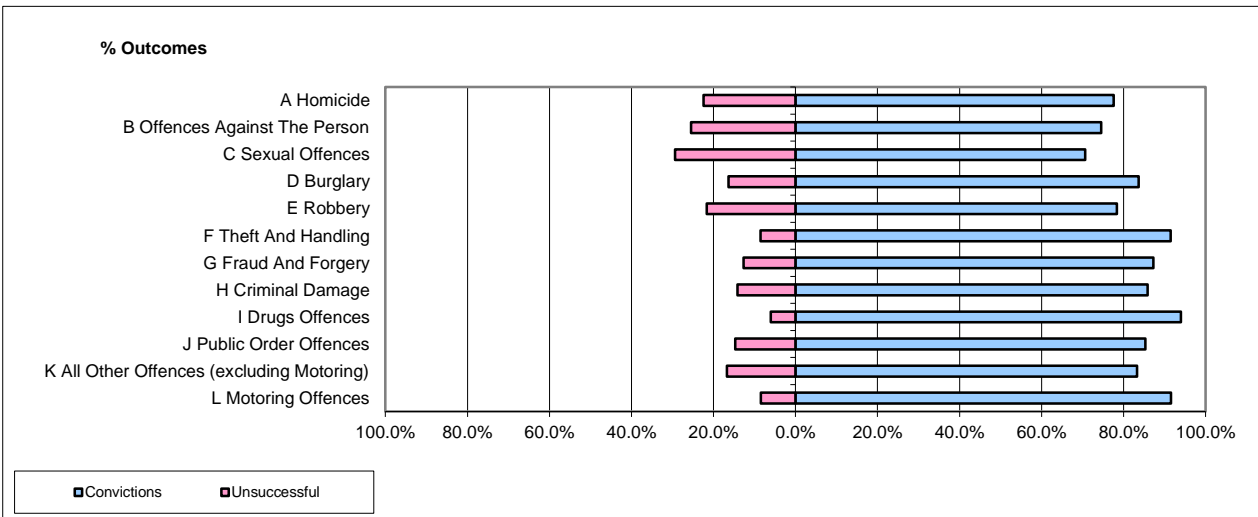


CPS OUTCOMES BY PRINCIPAL OFFENCE CATEGORY

Feb-16

National



	Convictions		Unsuccessful	
	Number of Defendants	%	Number of Defendants	%
A Homicide	82	77.4%	24	22.6%
B Offences Against The Person	11,781	77.8%	3,353	22.2%
C Sexual Offences	1,071	72.6%	404	27.4%
D Burglary	1,446	85.7%	242	14.3%
E Robbery	443	79.1%	117	20.9%
F Theft And Handling	8,721	91.4%	820	8.6%
G Fraud And Forgery	1,060	87.0%	159	13.0%
H Criminal Damage	2,037	84.9%	361	15.1%
I Drugs Offences	4,431	93.4%	311	6.6%
J Public Order Offences	3,602	84.5%	661	15.5%
K All Other Offences (excluding Motoring)	750	83.8%	145	16.2%
L Motoring Offences	7,608	84.3%	1,416	15.7%
Admin Finalisations	0	0.0%	718	100.0%
TOTAL	43,032	83.1%	8,731	16.9%

Please note that these data do not include Casework Divisions.