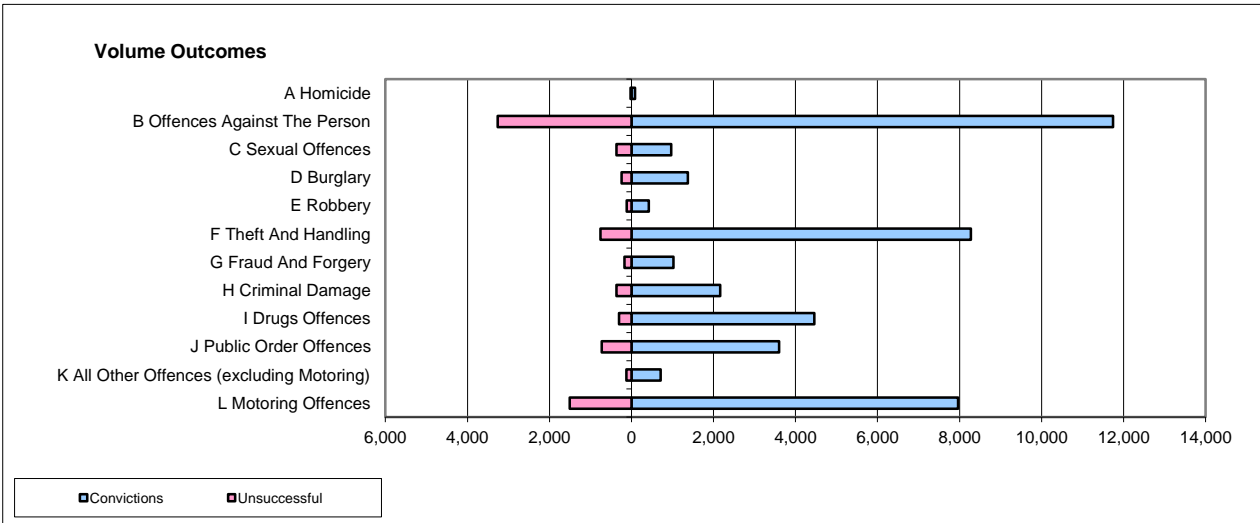
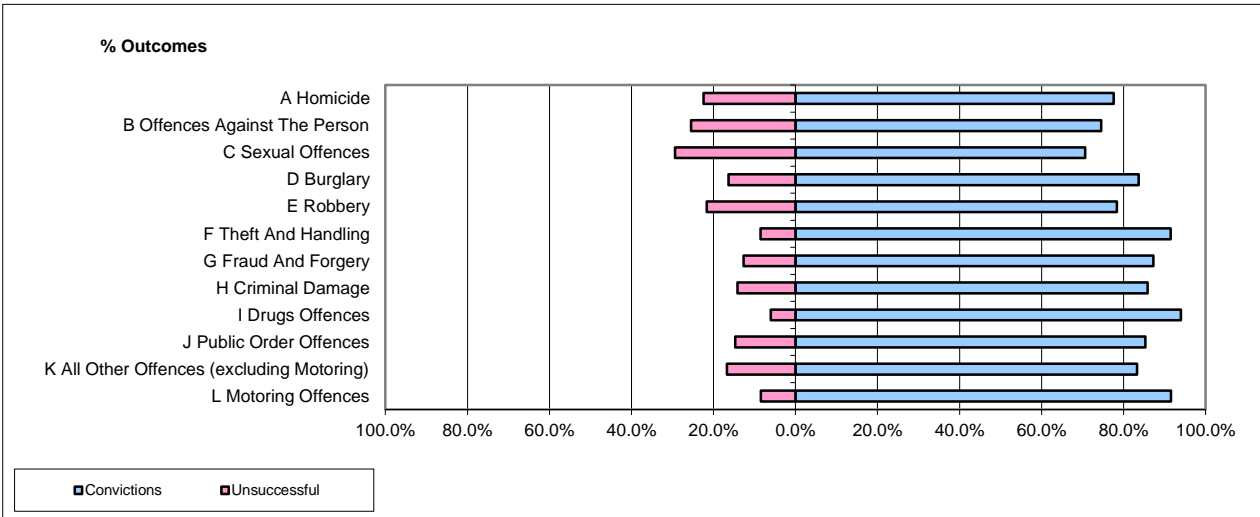


CPS OUTCOMES BY PRINCIPAL OFFENCE CATEGORY

Jan-16

National



	Convictions		Unsuccessful	
	Number of Defendants	%	Number of Defendants	%
A Homicide	88	81.5%	20	18.5%
B Offences Against The Person	11,741	78.3%	3,262	21.7%
C Sexual Offences	971	72.6%	367	27.4%
D Burglary	1,371	85.0%	242	15.0%
E Robbery	419	78.6%	114	21.4%
F Theft And Handling	8,276	91.6%	757	8.4%
G Fraud And Forgery	1,027	85.7%	171	14.3%
H Criminal Damage	2,166	85.4%	369	14.6%
I Drugs Offences	4,457	93.6%	303	6.4%
J Public Order Offences	3,597	83.3%	722	16.7%
K All Other Offences (excluding Motoring)	710	85.0%	125	15.0%
L Motoring Offences	7,962	84.1%	1,509	15.9%
Admin Finalisations	0	0.0%	963	100.0%
TOTAL	42,785	82.7%	8,924	17.3%

Please note that these data do not include Casework Divisions.