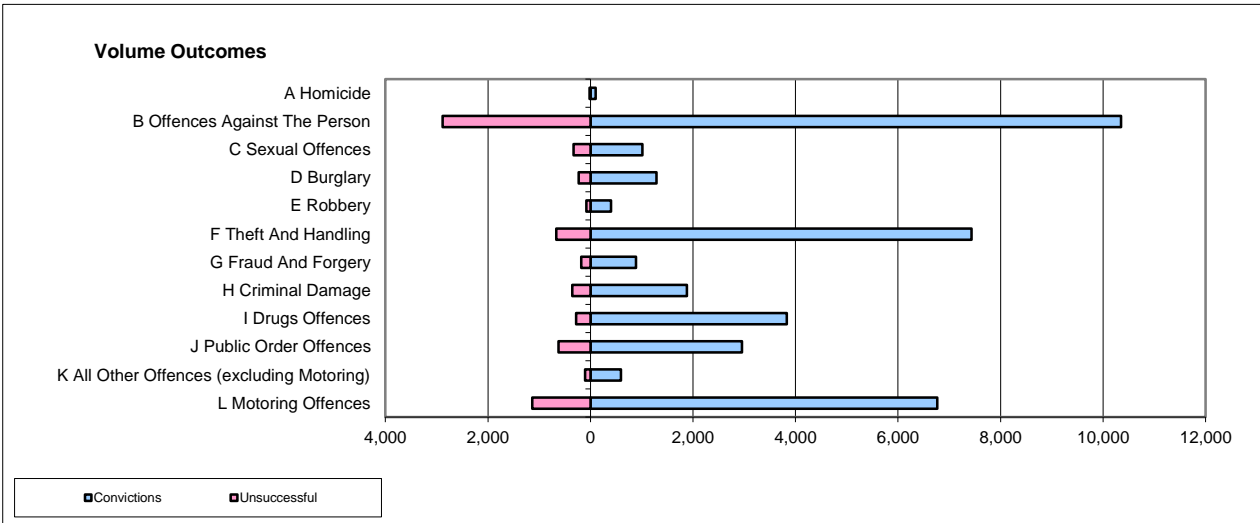
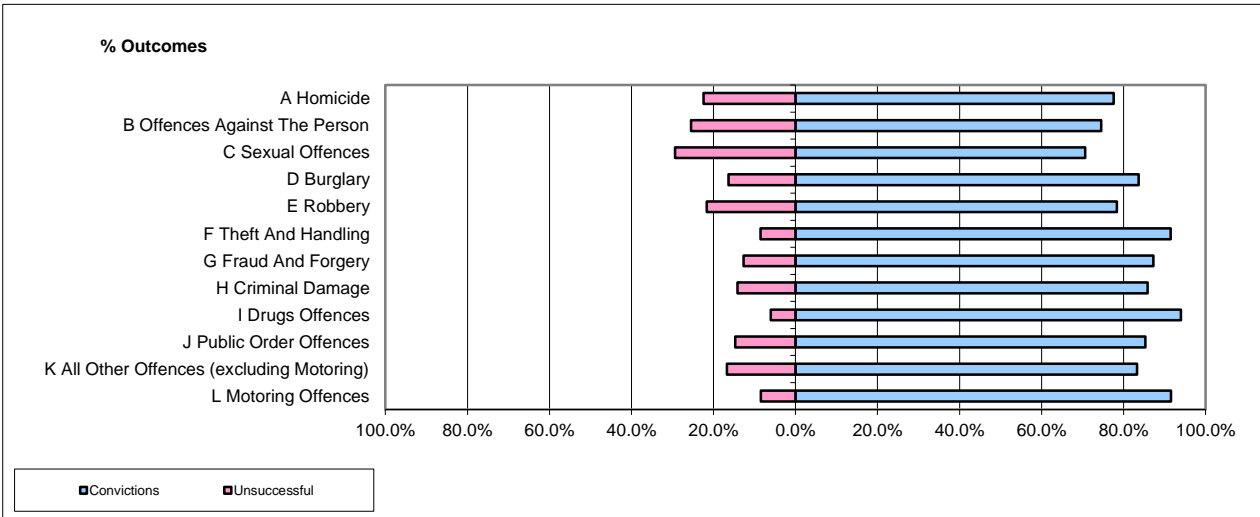


CPS OUTCOMES BY PRINCIPAL OFFENCE CATEGORY

Dec-15

National



	Convictions		Unsuccessful	
	Number of Defendants	%	Number of Defendants	%
A Homicide	104	83.9%	20	16.1%
B Offences Against The Person	10,349	78.2%	2,884	21.8%
C Sexual Offences	1,011	75.3%	332	24.7%
D Burglary	1,287	84.9%	229	15.1%
E Robbery	401	83.5%	79	16.5%
F Theft And Handling	7,431	91.8%	666	8.2%
G Fraud And Forgery	888	83.3%	178	16.7%
H Criminal Damage	1,881	84.2%	354	15.8%
I Drugs Offences	3,830	82.2%	279	6.8%
J Public Order Offences	2,956	93.2%	624	17.4%
K All Other Offences (excluding Motoring)	594	84.7%	107	15.3%
L Motoring Offences	6,764	85.6%	1,136	14.4%
Admin Finalisations	0	0.0%	890	100.0%
TOTAL	37,496	82.8%	7,778	17.2%

Please note that these data do not include Casework Divisions.