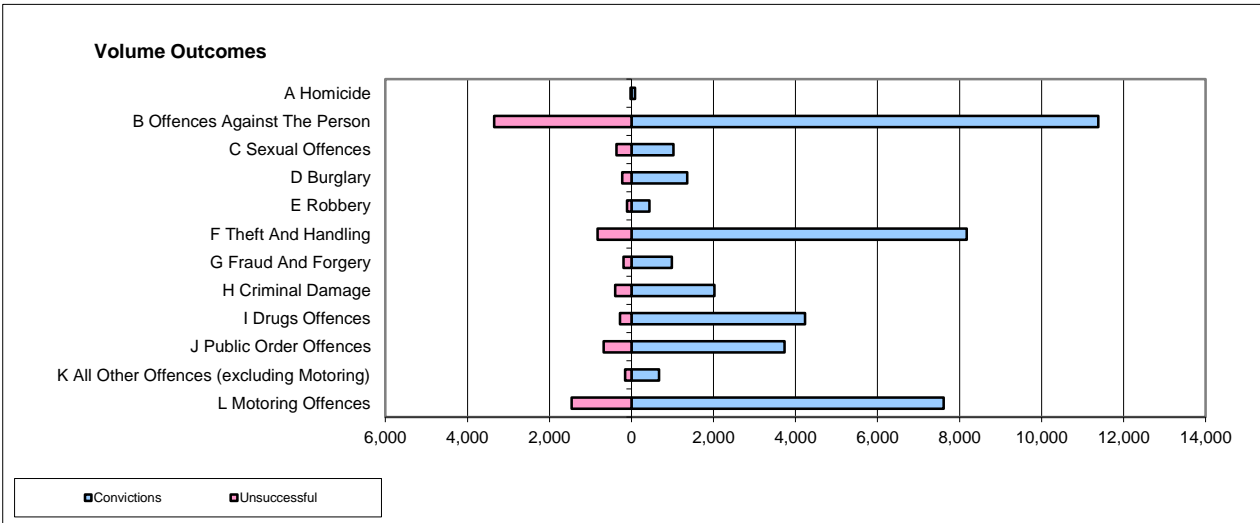
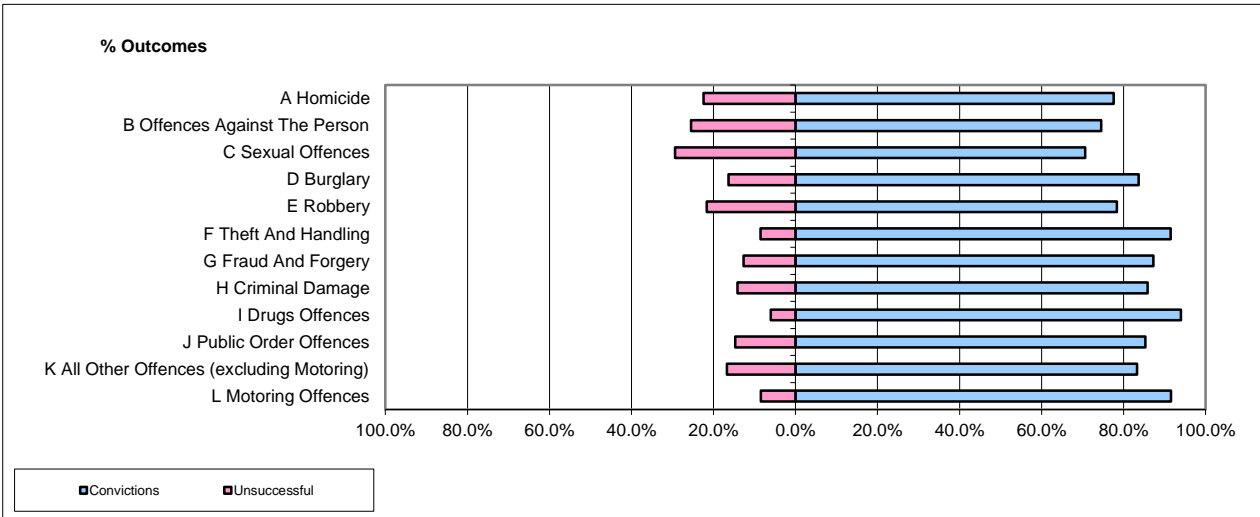


CPS OUTCOMES BY PRINCIPAL OFFENCE CATEGORY

Nov-15

National



	Convictions		Unsuccessful	
	Number of Defendants	%	Number of Defendants	%
A Homicide	88	80.7%	21	19.3%
B Offences Against The Person	11,381	77.3%	3,350	22.7%
C Sexual Offences	1,026	73.5%	370	26.5%
D Burglary	1,360	85.9%	224	14.1%
E Robbery	434	80.2%	107	19.8%
F Theft And Handling	8,179	90.8%	826	9.2%
G Fraud And Forgery	982	83.2%	198	16.8%
H Criminal Damage	2,022	83.7%	394	16.3%
I Drugs Offences	4,231	93.7%	284	6.3%
J Public Order Offences	3,729	84.7%	675	15.3%
K All Other Offences (excluding Motoring)	676	81.4%	154	18.6%
L Motoring Offences	7,612	83.9%	1,459	16.1%
Admin Finalisations	0	0.0%	771	100.0%
TOTAL	41,720	82.5%	8,833	17.5%

Please note that these data do not include Casework Divisions.