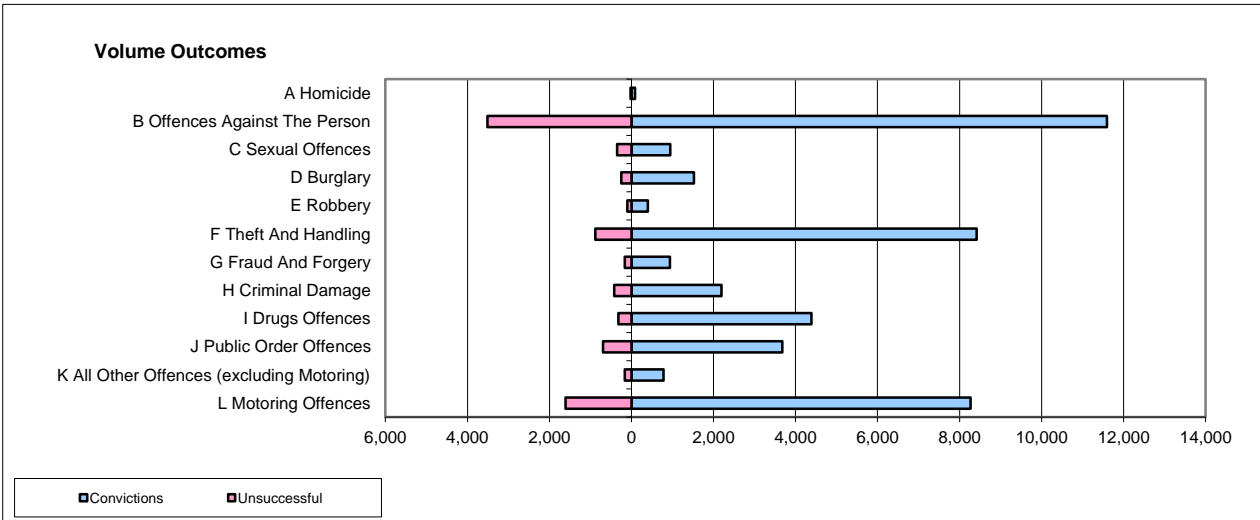
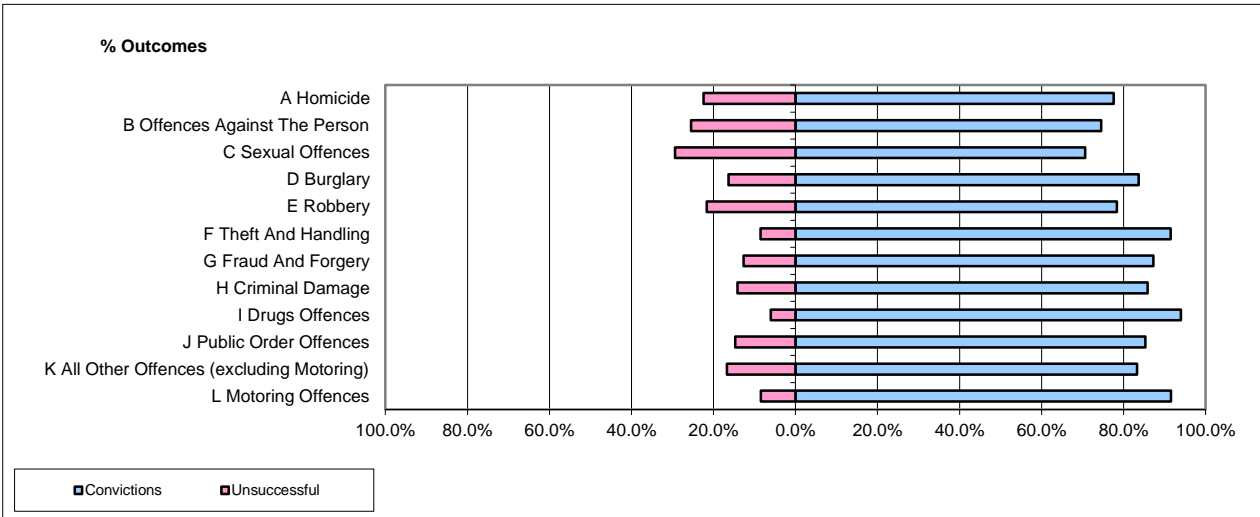


CPS OUTCOMES BY PRINCIPAL OFFENCE CATEGORY

Oct-15

National



	Convictions		Unsuccessful	
	Number of Defendants	%	Number of Defendants	%
A Homicide	90	81.1%	21	18.9%
B Offences Against The Person	11,595	76.8%	3,509	23.2%
C Sexual Offences	942	72.8%	352	27.2%
D Burglary	1,527	86.0%	248	14.0%
E Robbery	395	79.5%	102	20.5%
F Theft And Handling	8,414	90.5%	881	9.5%
G Fraud And Forgery	936	85.2%	163	14.8%
H Criminal Damage	2,191	83.8%	424	16.2%
I Drugs Offences	4,389	93.2%	319	6.8%
J Public Order Offences	3,677	84.1%	696	15.9%
K All Other Offences (excluding Motoring)	780	82.9%	161	17.1%
L Motoring Offences	8,266	83.7%	1,605	16.3%
Admin Finalisations	0	0.0%	920	100.0%
TOTAL	43,202	82.1%	9,401	17.9%

Please note that these data do not include Casework Divisions.