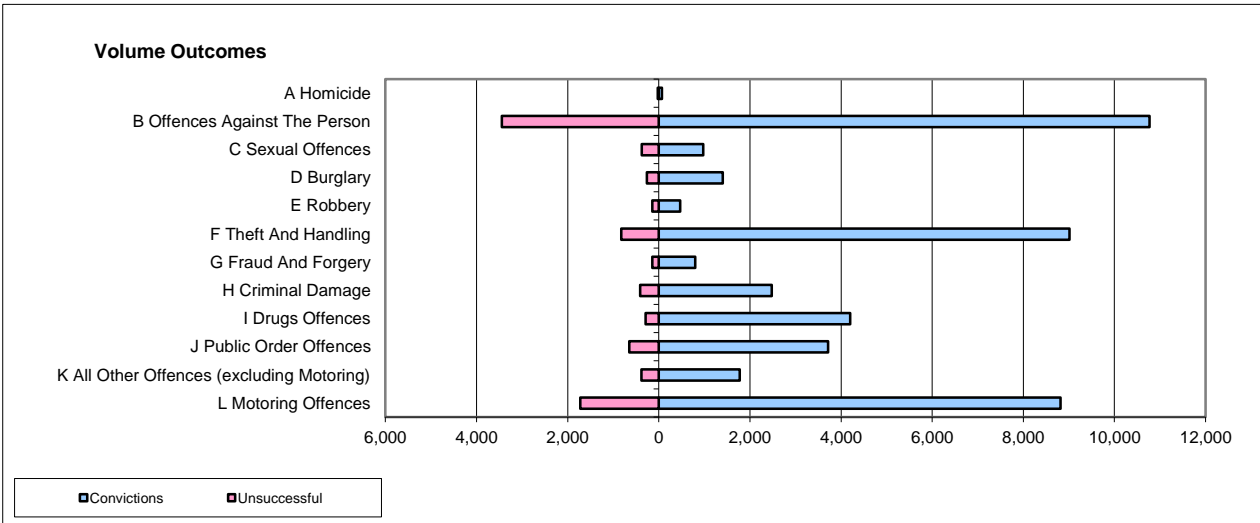
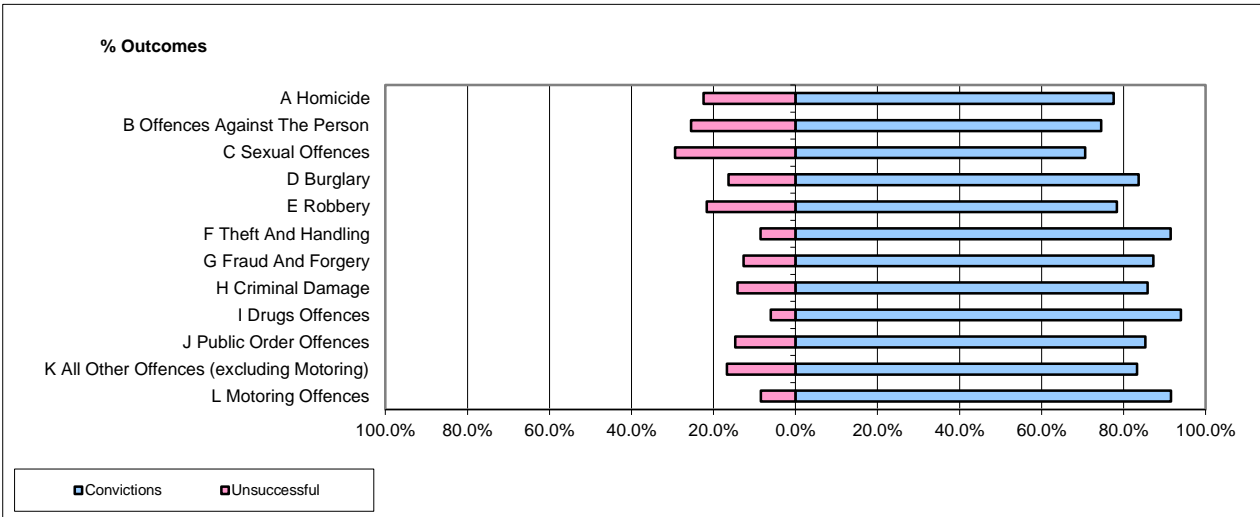


CPS OUTCOMES BY PRINCIPAL OFFENCE CATEGORY

Sep-15

National



	Convictions		Unsuccessful	
	Number of Defendants	%	Number of Defendants	%
A Homicide	65	73.9%	23	26.1%
B Offences Against The Person	10,769	75.8%	3,443	24.2%
C Sexual Offences	972	72.1%	376	27.9%
D Burglary	1,403	84.4%	260	15.6%
E Robbery	468	77.0%	140	23.0%
F Theft And Handling	9,015	91.6%	825	8.4%
G Fraud And Forgery	800	84.8%	143	15.2%
H Criminal Damage	2,481	85.7%	413	14.3%
I Drugs Offences	4,202	93.5%	290	6.5%
J Public Order Offences	3,717	85.2%	647	14.8%
K All Other Offences (excluding Motoring)	1,775	82.3%	381	17.7%
L Motoring Offences	8,817	83.6%	1,725	16.4%
Admin Finalisations	0	0.0%	927	100.0%
TOTAL	44,484	82.3%	9,593	17.7%

Please note that these data do not include Casework Divisions.