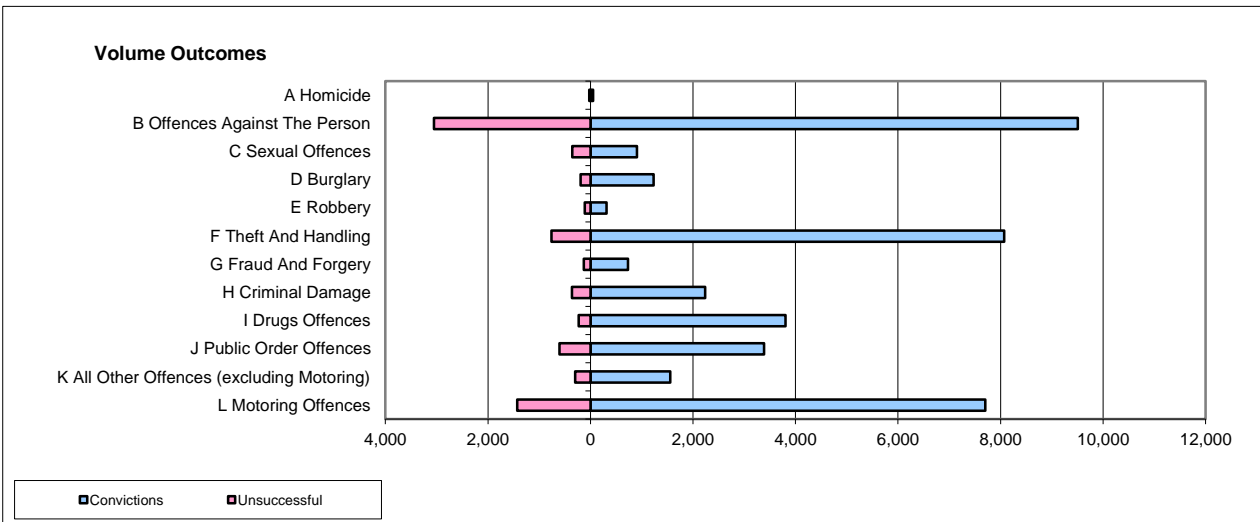
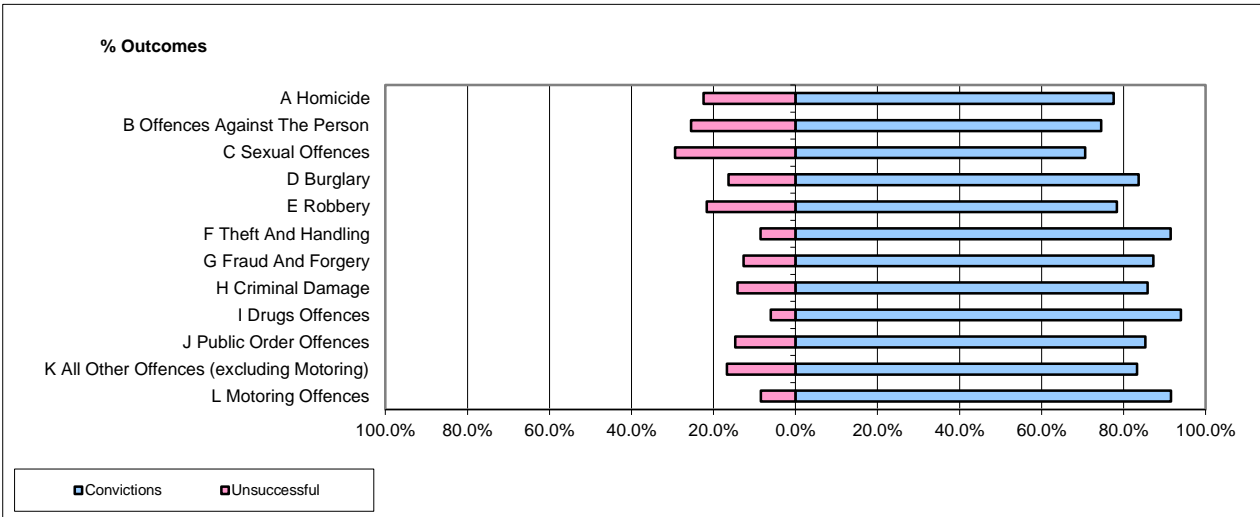


CPS OUTCOMES BY PRINCIPAL OFFENCE CATEGORY

Aug-15

National



	Convictions		Unsuccessful	
	Number of Defendants	%	Number of Defendants	%
A Homicide	52	70.3%	22	29.7%
B Offences Against The Person	9,508	75.7%	3,052	24.3%
C Sexual Offences	906	71.8%	356	28.2%
D Burglary	1,232	86.4%	194	13.6%
E Robbery	316	73.8%	112	26.2%
F Theft And Handling	8,070	91.4%	763	8.6%
G Fraud And Forgery	729	85.2%	127	14.8%
H Criminal Damage	2,235	86.0%	363	14.0%
I Drugs Offences	3,804	94.3%	230	5.7%
J Public Order Offences	3,386	84.9%	602	15.1%
K All Other Offences (excluding Motoring)	1,555	84.0%	297	16.0%
L Motoring Offences	7,702	84.3%	1,432	15.7%
Admin Finalisations	0	0.0%	781	100.0%
TOTAL	39,495	82.6%	8,331	17.4%

Please note that these data do not include Casework Divisions.