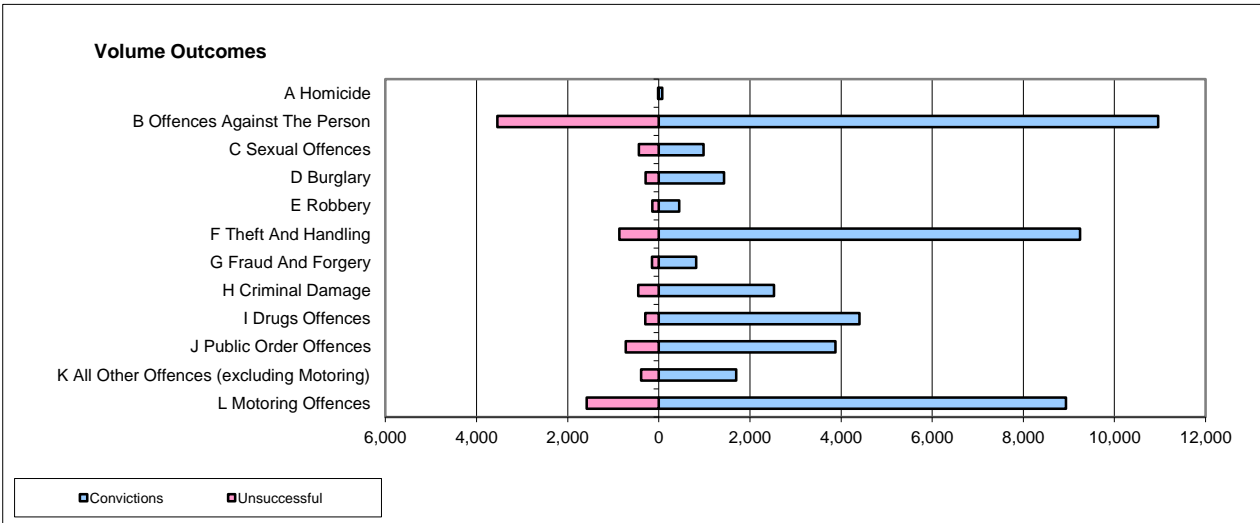
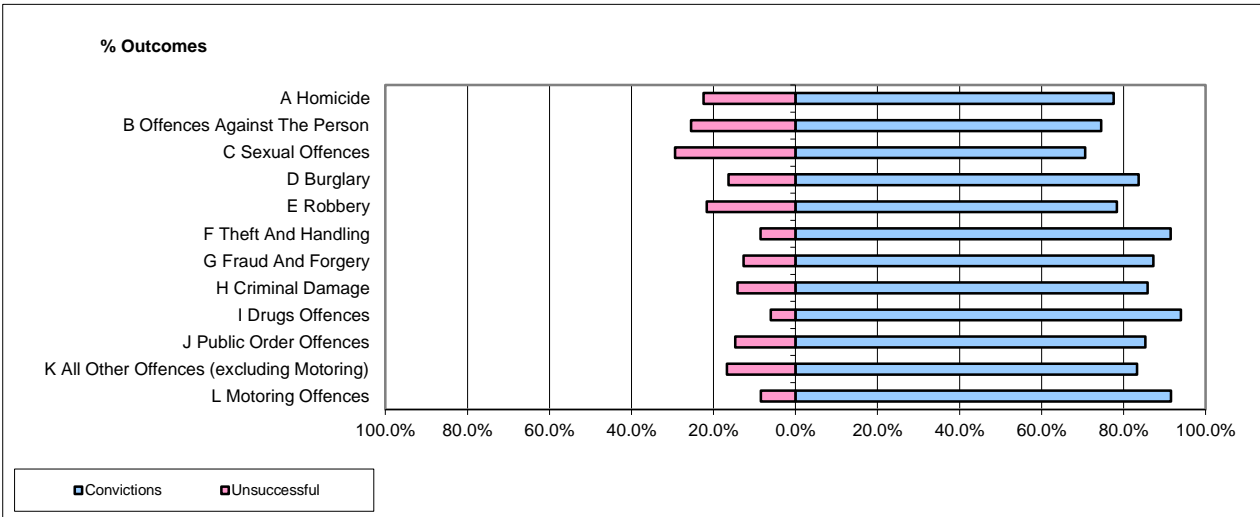


CPS OUTCOMES BY PRINCIPAL OFFENCE CATEGORY

Jul-15

National



	Convictions		Unsuccessful	
	Number of Defendants	%	Number of Defendants	%
A Homicide	76	82.6%	16	17.4%
B Offences Against The Person	10,958	75.5%	3,547	24.5%
C Sexual Offences	981	69.2%	437	30.8%
D Burglary	1,430	83.2%	288	16.8%
E Robbery	446	75.6%	144	24.4%
F Theft And Handling	9,248	91.4%	866	8.6%
G Fraud And Forgery	822	84.6%	150	15.4%
H Criminal Damage	2,530	84.9%	449	15.1%
I Drugs Offences	4,402	93.7%	294	6.3%
J Public Order Offences	3,875	84.2%	725	15.8%
K All Other Offences (excluding Motoring)	1,700	81.5%	387	18.5%
L Motoring Offences	8,936	84.9%	1,585	15.1%
Admin Finalisations	0	0.0%	1,051	100.0%
TOTAL	45,404	82.0%	9,939	18.0%

Please note that these data do not include Casework Divisions.