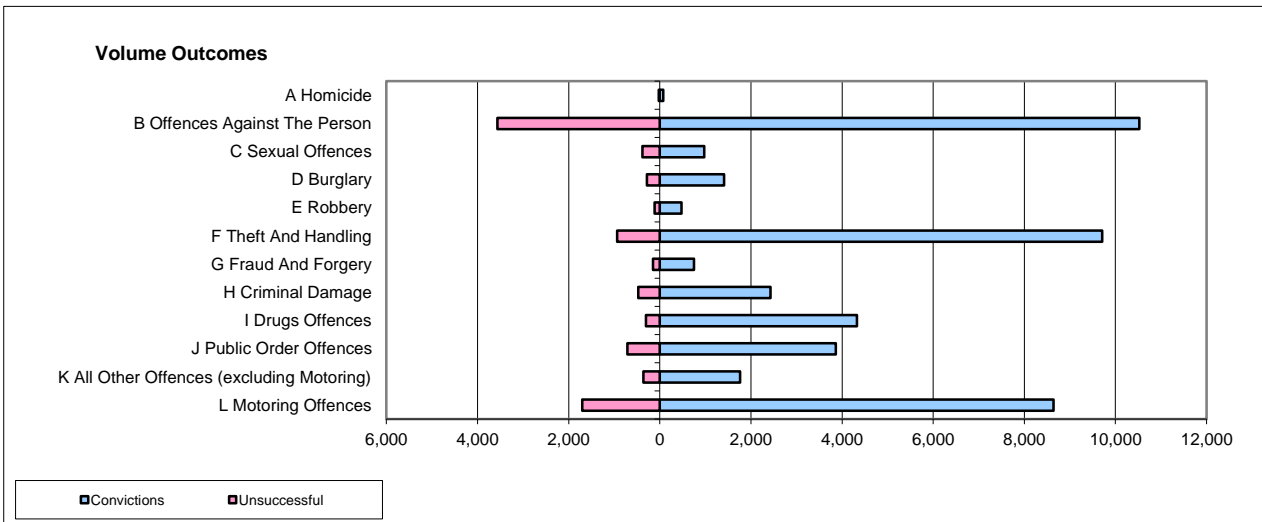
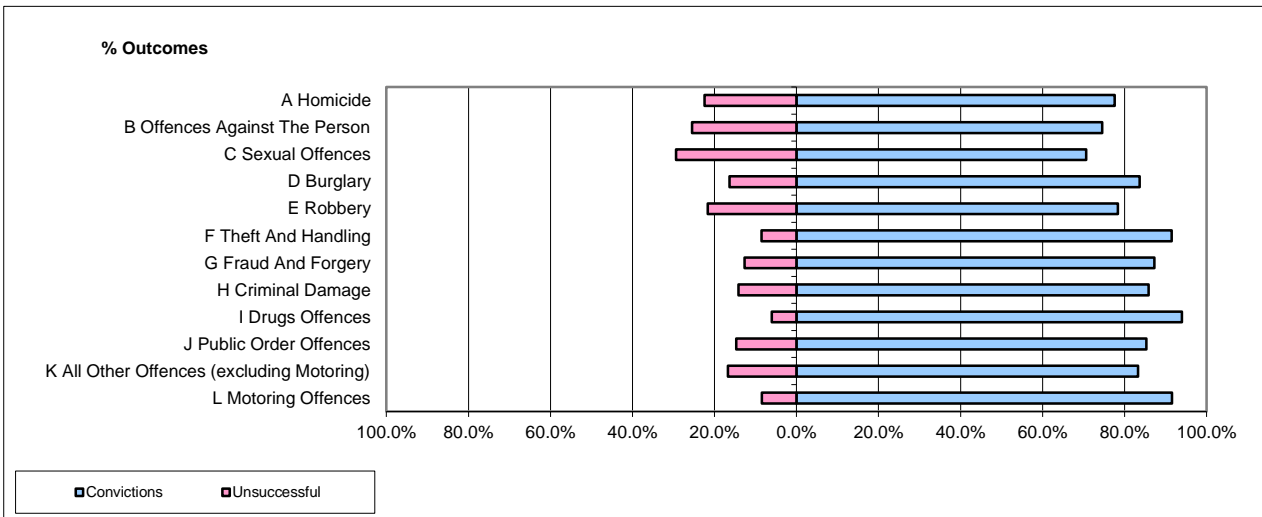


CPS OUTCOMES BY PRINCIPAL OFFENCE CATEGORY

Jun-15

National



	Convictions		Unsuccessful	
	Number of Defendants	%	Number of Defendants	%
A Homicide	72	75.8%	23	24.2%
B Offences Against The Person	10,524	74.7%	3,568	25.3%
C Sexual Offences	975	71.7%	385	28.3%
D Burglary	1,411	83.4%	281	16.6%
E Robbery	477	81.0%	112	19.0%
F Theft And Handling	9,711	91.2%	940	8.8%
G Fraud And Forgery	748	83.2%	151	16.8%
H Criminal Damage	2,431	83.8%	471	16.2%
I Drugs Offences	4,326	93.4%	305	6.6%
J Public Order Offences	3,865	84.5%	709	15.5%
K All Other Offences (excluding Motoring)	1,759	83.1%	358	16.9%
L Motoring Offences	8,644	83.5%	1,703	16.5%
Admin Finalisations	0	0.0%	845	100.0%
TOTAL	44,943	82.0%	9,851	18.0%

Please note that these data do not include Casework Divisions.