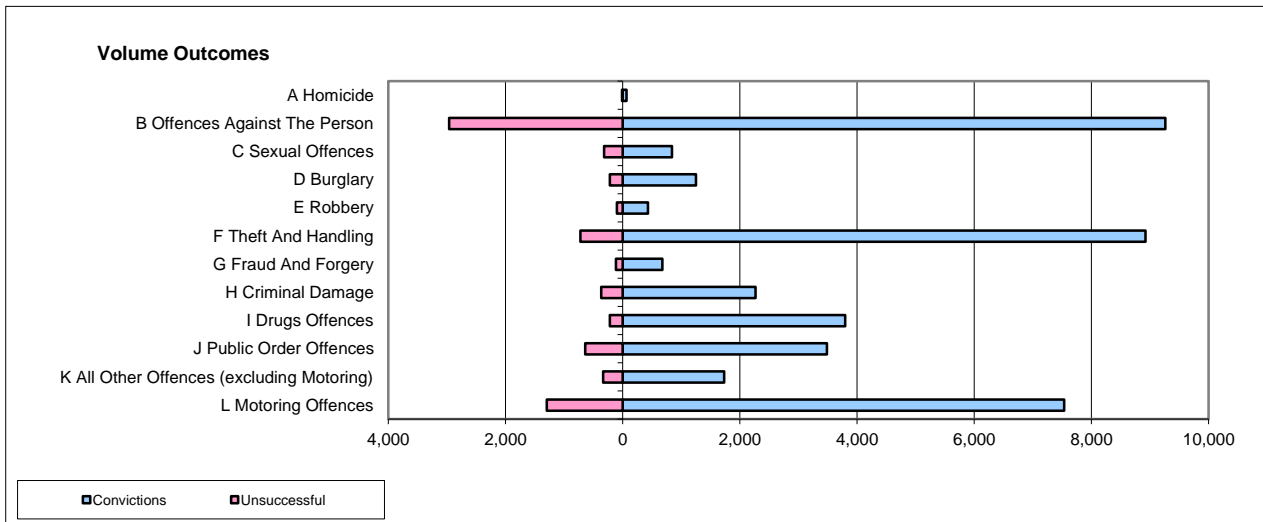
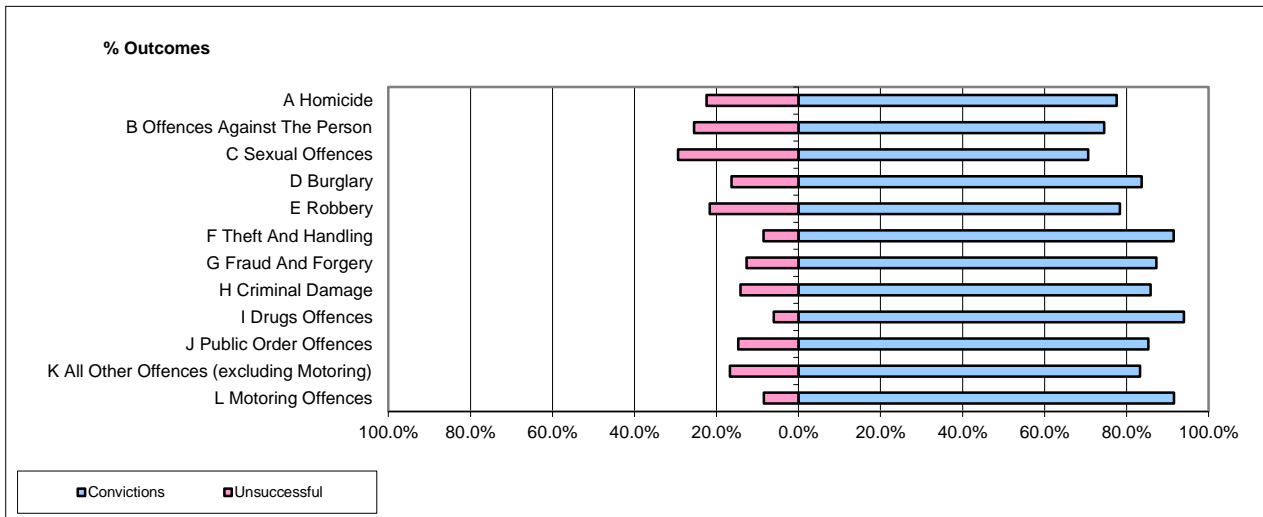


**CPS OUTCOMES BY PRINCIPAL OFFENCE CATEGORY**

**May-15**

**National**



	Convictions		Unsuccessful	
	Number of Defendants	%	Number of Defendants	%
<b>A Homicide</b>	63	84.0%	12	16.0%
<b>B Offences Against The Person</b>	9,260	75.7%	2,966	24.3%
<b>C Sexual Offences</b>	838	72.4%	319	27.6%
<b>D Burglary</b>	1,250	84.9%	223	15.1%
<b>E Robbery</b>	431	81.5%	98	18.5%
<b>F Theft And Handling</b>	8,924	92.5%	722	7.5%
<b>G Fraud And Forgery</b>	678	85.2%	118	14.8%
<b>H Criminal Damage</b>	2,264	86.1%	366	13.9%
<b>I Drugs Offences</b>	3,794	94.4%	223	5.6%
<b>J Public Order Offences</b>	3,483	84.4%	642	15.6%
<b>K All Other Offences (excluding Motoring)</b>	1,733	83.9%	333	16.1%
<b>L Motoring Offences</b>	7,534	85.3%	1,295	14.7%
<b>Admin Finalisations</b>	0	0.0%	712	100.0%
<b>TOTAL</b>	<b>40,252</b>	<b>83.4%</b>	<b>8,029</b>	<b>16.6%</b>

Please note that these data do not include Casework Divisions.