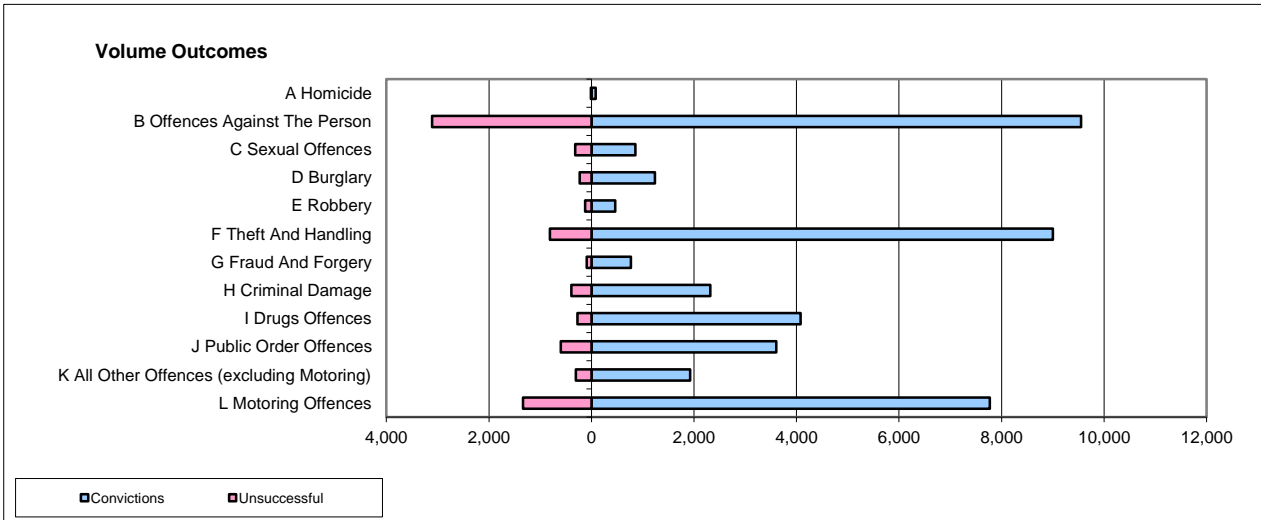
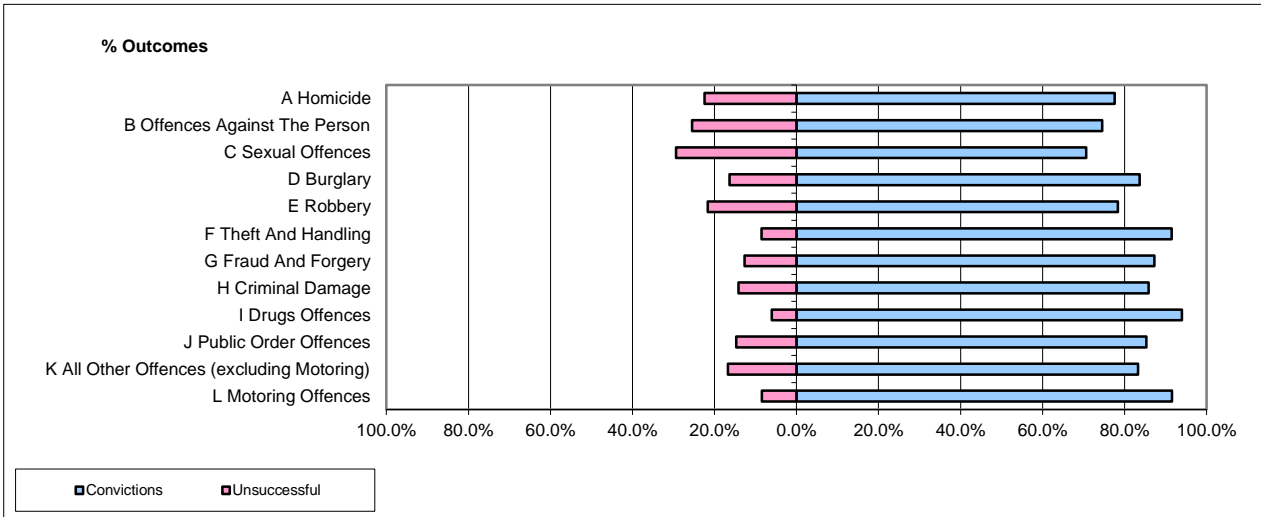


CPS OUTCOMES BY PRINCIPAL OFFENCE CATEGORY

Apr-15

National



	Convictions		Unsuccessful	
	Number of Defendants	%	Number of Defendants	%
A Homicide	84	88.4%	11	11.6%
B Offences Against The Person	9,554	75.4%	3,111	24.6%
C Sexual Offences	856	73.0%	316	27.0%
D Burglary	1,239	84.4%	229	15.6%
E Robbery	463	79.0%	123	21.0%
F Theft And Handling	9,000	91.8%	808	8.2%
G Fraud And Forgery	769	89.1%	94	10.9%
H Criminal Damage	2,321	85.6%	392	14.4%
I Drugs Offences	4,078	93.7%	272	6.3%
J Public Order Offences	3,606	85.8%	598	14.2%
K All Other Offences (excluding Motoring)	1,927	86.3%	305	13.7%
L Motoring Offences	7,768	85.3%	1,338	14.7%
Admin Finalisations	0	0.0%	665	100.0%
TOTAL	41,665	83.5%	8,262	16.5%

Please note that these data do not include Casework Divisions.