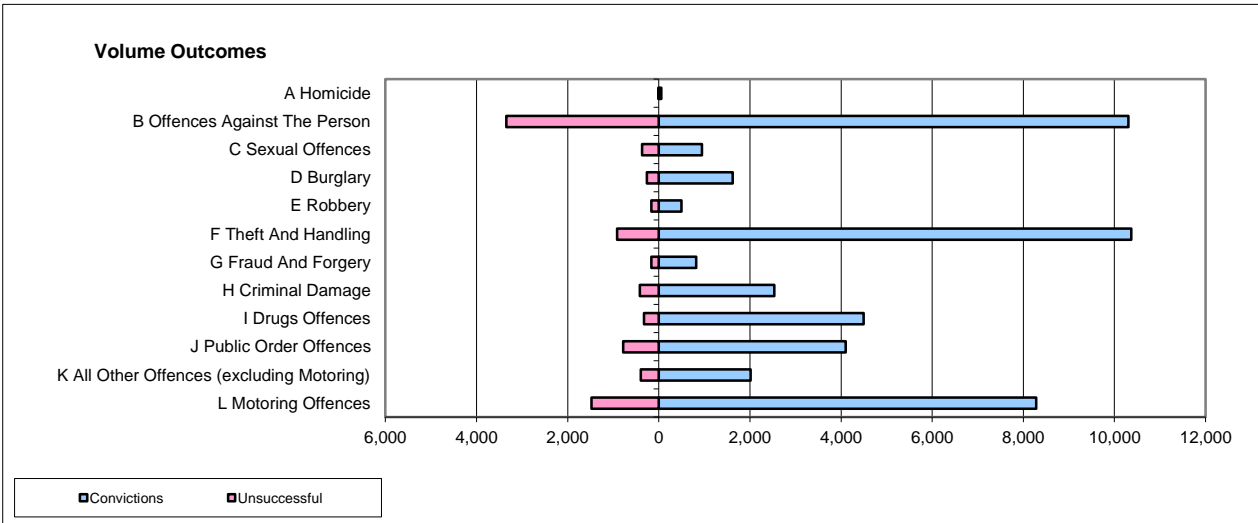
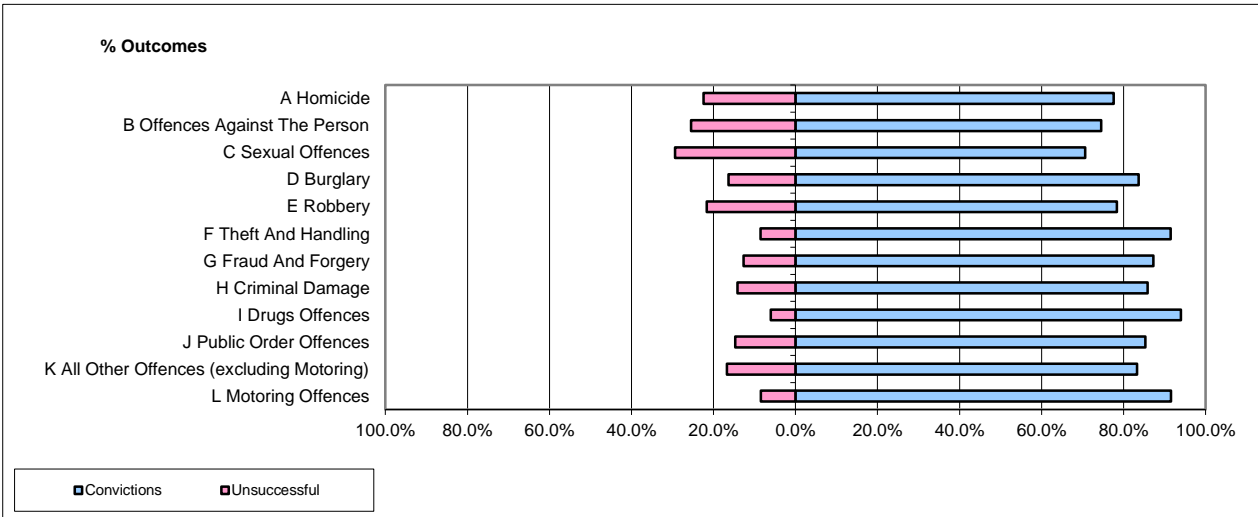


CPS OUTCOMES BY PRINCIPAL OFFENCE CATEGORY

Mar-15

National



	Convictions		Unsuccessful	
	Number of Defendants	%	Number of Defendants	%
A Homicide	57	82.6%	12	17.4%
B Offences Against The Person	10,309	75.5%	3,347	24.5%
C Sexual Offences	946	72.0%	368	28.0%
D Burglary	1,621	86.0%	263	14.0%
E Robbery	496	75.4%	162	24.6%
F Theft And Handling	10,367	91.9%	918	8.1%
G Fraud And Forgery	817	83.5%	162	16.5%
H Criminal Damage	2,536	85.9%	416	14.1%
I Drugs Offences	4,497	93.3%	324	6.7%
J Public Order Offences	4,102	84.0%	781	16.0%
K All Other Offences (excluding Motoring)	2,017	83.5%	398	16.5%
L Motoring Offences	8,279	84.8%	1,481	15.2%
Admin Finalisations	0	0.0%	628	100.0%
TOTAL	46,044	83.3%	9,260	16.7%

Please note that these data do not include Casework Divisions.