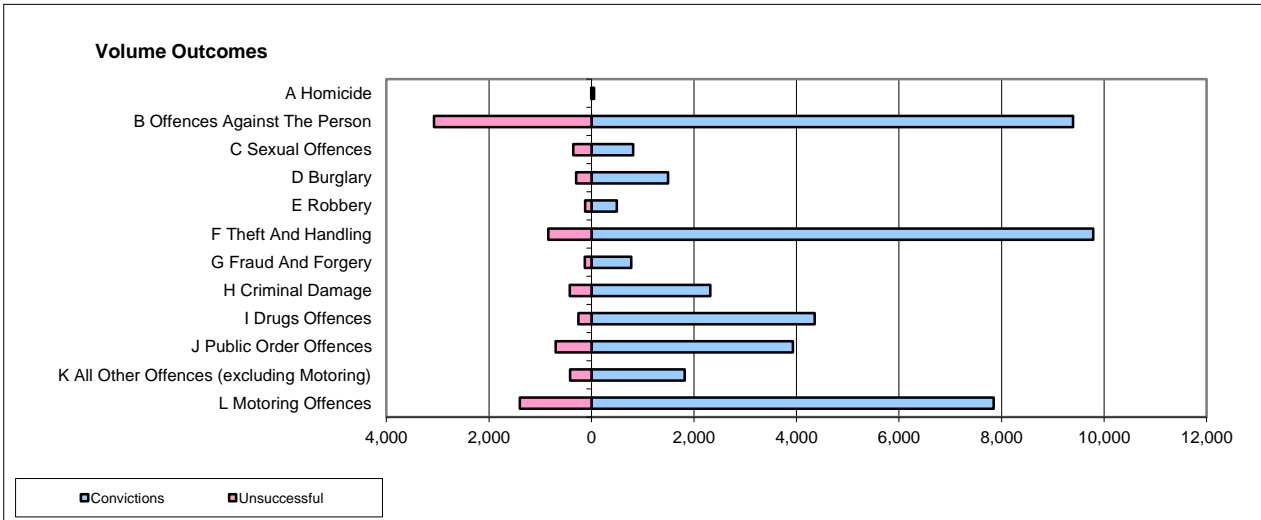
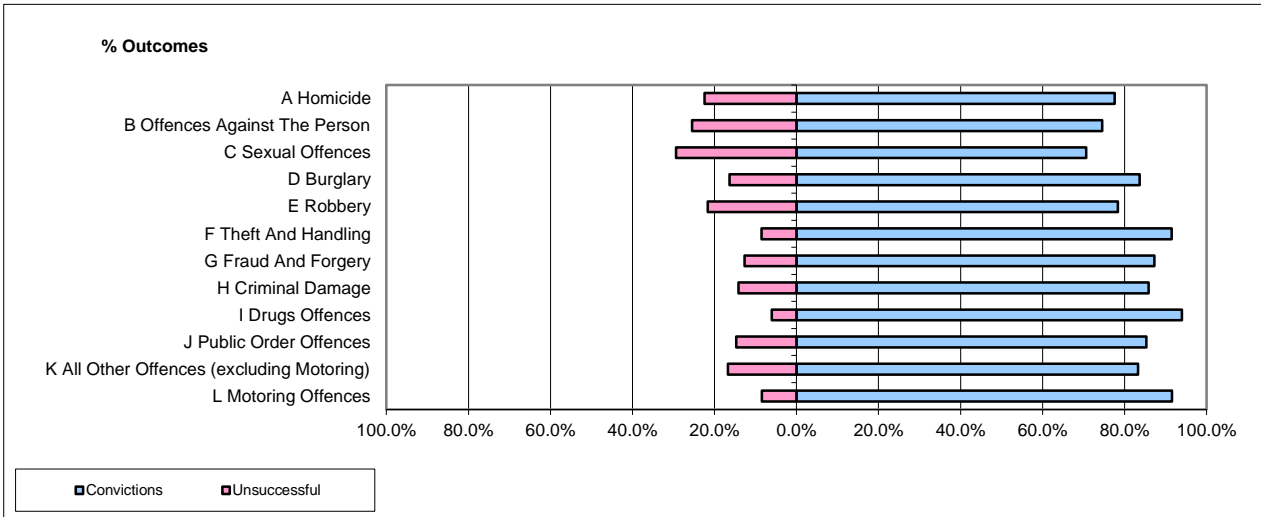


CPS OUTCOMES BY PRINCIPAL OFFENCE CATEGORY

Feb-15

National



	Convictions		Unsuccessful	
	Number of Defendants	%	Number of Defendants	%
A Homicide	51	86.4%	8	13.6%
B Offences Against The Person	9,394	75.3%	3,074	24.7%
C Sexual Offences	816	69.6%	356	30.4%
D Burglary	1,494	83.5%	296	16.5%
E Robbery	494	79.8%	125	20.2%
F Theft And Handling	9,788	92.1%	841	7.9%
G Fraud And Forgery	778	86.0%	127	14.0%
H Criminal Damage	2,321	84.5%	426	15.5%
I Drugs Offences	4,352	94.4%	256	5.6%
J Public Order Offences	3,927	84.9%	696	15.1%
K All Other Offences (excluding Motoring)	1,820	81.3%	418	18.7%
L Motoring Offences	7,844	84.9%	1,396	15.1%
Admin Finalisations	0	0.0%	735	100.0%
TOTAL	43,079	83.1%	8,754	16.9%

Please note that these data do not include Casework Divisions.