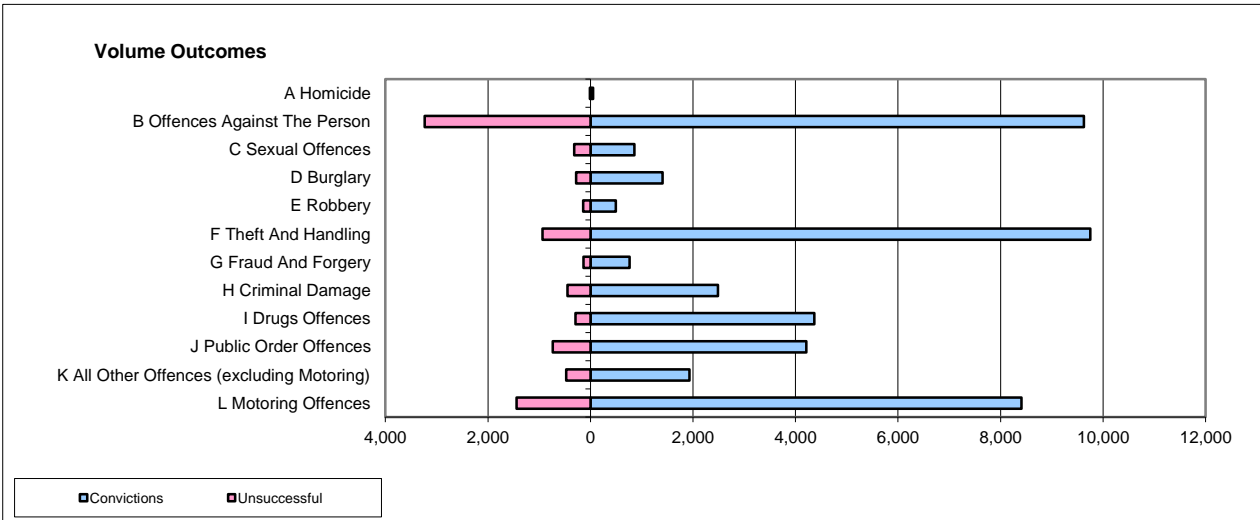
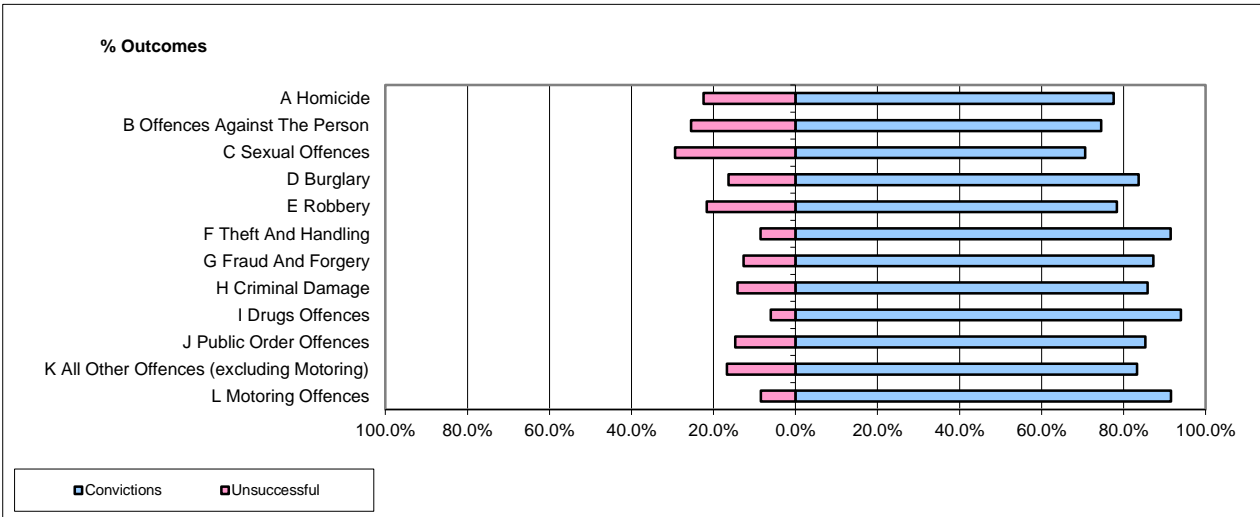


CPS OUTCOMES BY PRINCIPAL OFFENCE CATEGORY

Jan-15

National



	Convictions		Unsuccessful	
	Number of Defendants	%	Number of Defendants	%
A Homicide	49	77.8%	14	22.2%
B Offences Against The Person	9,627	74.8%	3,235	25.2%
C Sexual Offences	859	73.0%	317	27.0%
D Burglary	1,405	83.2%	283	16.8%
E Robbery	495	77.3%	145	22.7%
F Theft And Handling	9,751	91.2%	938	8.8%
G Fraud And Forgery	761	84.8%	136	15.2%
H Criminal Damage	2,489	84.8%	446	15.2%
I Drugs Offences	4,370	93.7%	293	6.3%
J Public Order Offences	4,211	85.1%	739	14.9%
K All Other Offences (excluding Motoring)	1,934	80.4%	471	19.6%
L Motoring Offences	8,408	85.4%	1,439	14.6%
Admin Finalisations	0	0.0%	904	100.0%
TOTAL	44,359	82.6%	9,360	17.4%

Please note that these data do not include Casework Divisions.