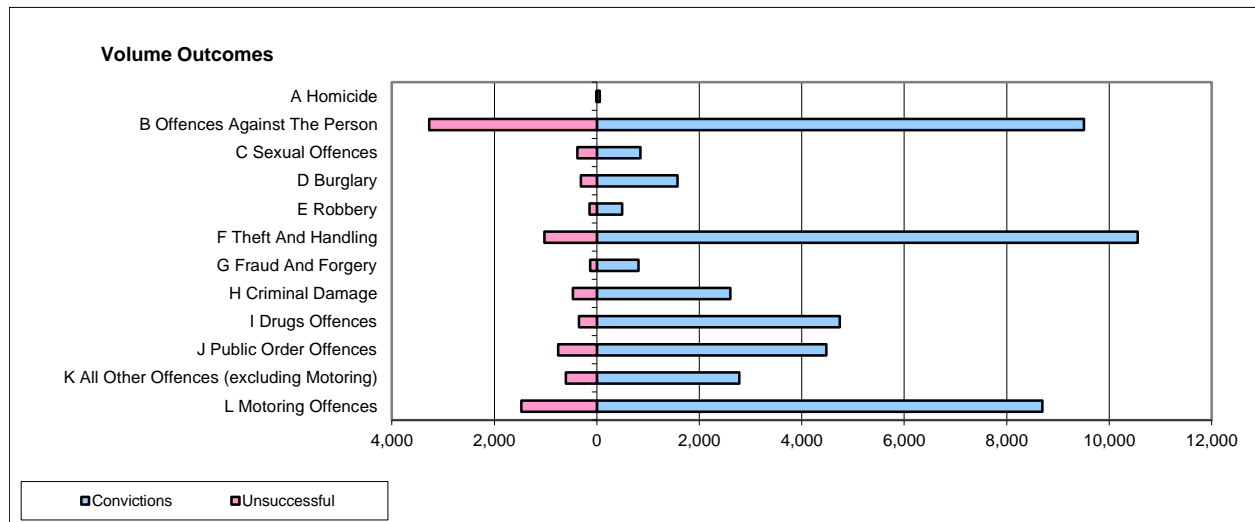
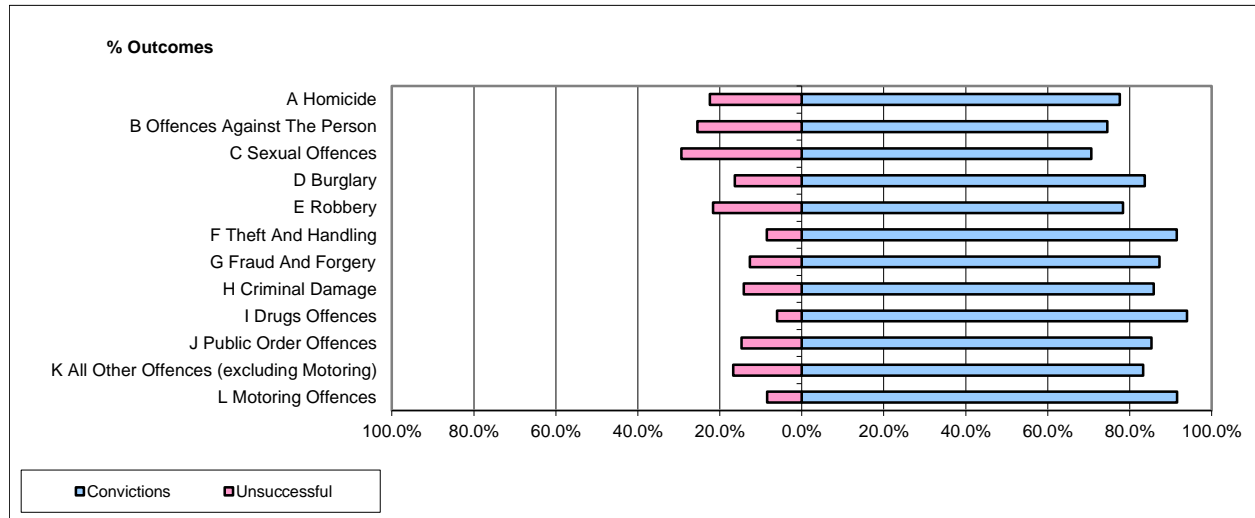


CPS OUTCOMES BY PRINCIPAL OFFENCE CATEGORY

Oct-14

National



	Convictions		Unsuccessful	
	Number of Defendants	%	Number of Defendants	%
A Homicide	59	88.1%	8	11.9%
B Offences Against The Person	9,506	74.4%	3,271	25.6%
C Sexual Offences	853	69.3%	377	30.7%
D Burglary	1,576	83.6%	310	16.4%
E Robbery	492	77.4%	144	22.6%
F Theft And Handling	10,554	91.1%	1,025	8.9%
G Fraud And Forgery	810	85.9%	133	14.1%
H Criminal Damage	2,605	84.9%	465	15.1%
I Drugs Offences	4,741	93.2%	346	6.8%
J Public Order Offences	4,481	85.5%	757	14.5%
K All Other Offences (excluding Motoring)	2,780	82.2%	603	17.8%
L Motoring Offences	8,695	85.5%	1,473	14.5%
Admin Finalisations	0	0.0%	789	100.0%
TOTAL	47,152	82.9%	9,701	17.1%

Please note that these data do not include Casework Divisions.