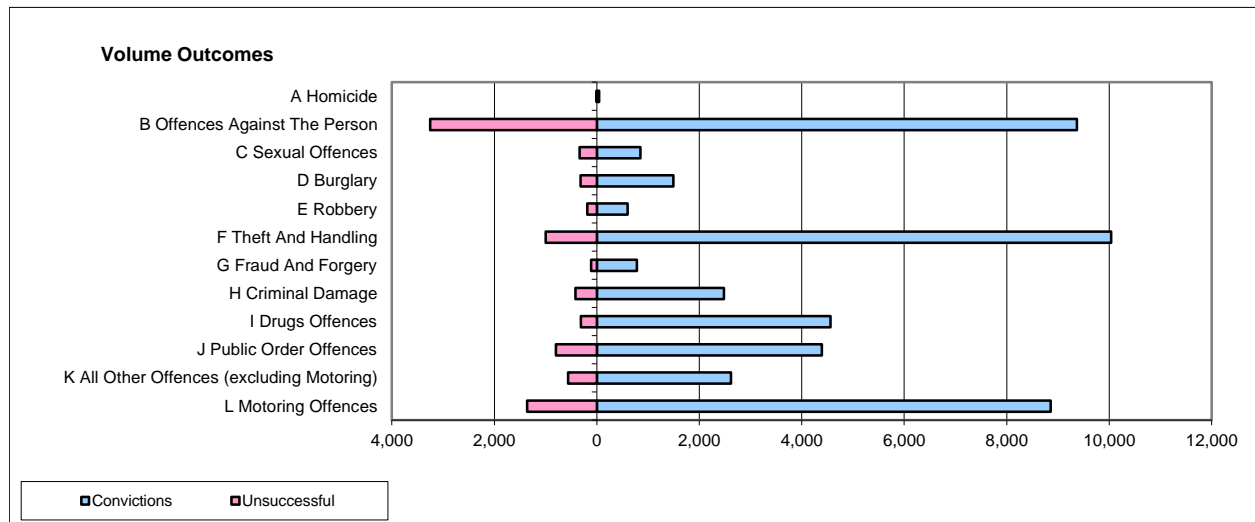
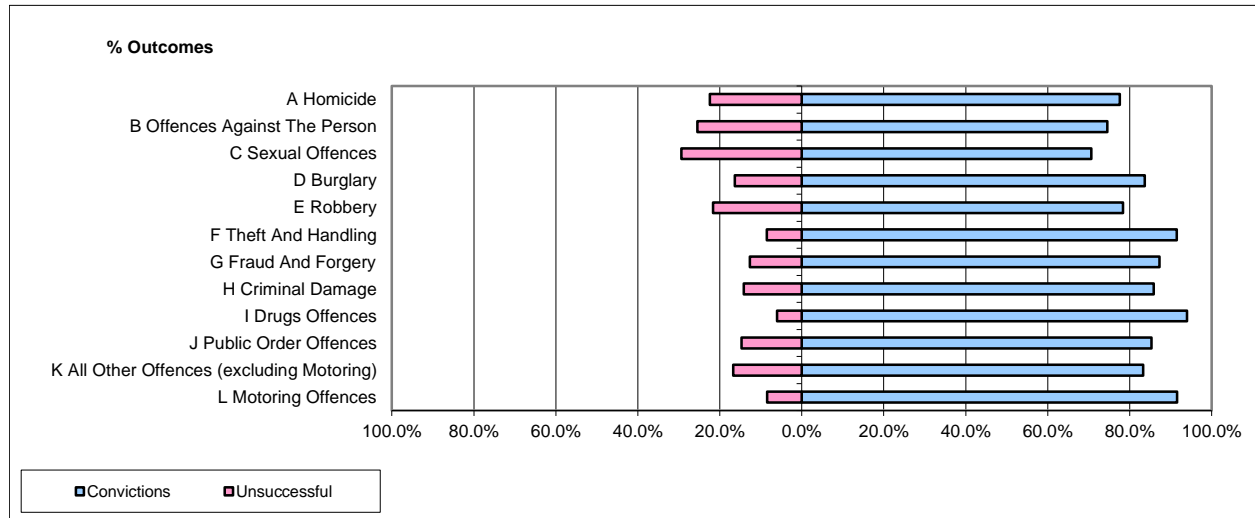


**CPS OUTCOMES BY PRINCIPAL OFFENCE CATEGORY**

Sep-14

**National**



	Convictions		Unsuccessful	
	Number of Defendants	%	Number of Defendants	%
<b>A Homicide</b>	47	85.5%	8	14.5%
<b>B Offences Against The Person</b>	9,369	74.2%	3,251	25.8%
<b>C Sexual Offences</b>	853	71.7%	336	28.3%
<b>D Burglary</b>	1,491	82.5%	317	17.5%
<b>E Robbery</b>	602	76.2%	188	23.8%
<b>F Theft And Handling</b>	10,041	91.0%	998	9.0%
<b>G Fraud And Forgery</b>	781	87.4%	113	12.6%
<b>H Criminal Damage</b>	2,483	85.6%	419	14.4%
<b>I Drugs Offences</b>	4,558	93.6%	310	6.4%
<b>J Public Order Offences</b>	4,390	84.6%	801	15.4%
<b>K All Other Offences (excluding Motoring)</b>	2,619	82.4%	558	17.6%
<b>L Motoring Offences</b>	8,858	86.7%	1,363	13.3%
<b>Admin Finalisations</b>	0	0.0%	793	100.0%
<b>TOTAL</b>	<b>46,092</b>	<b>83.0%</b>	<b>9,455</b>	<b>17.0%</b>

Please note that these data do not include Casework Divisions.