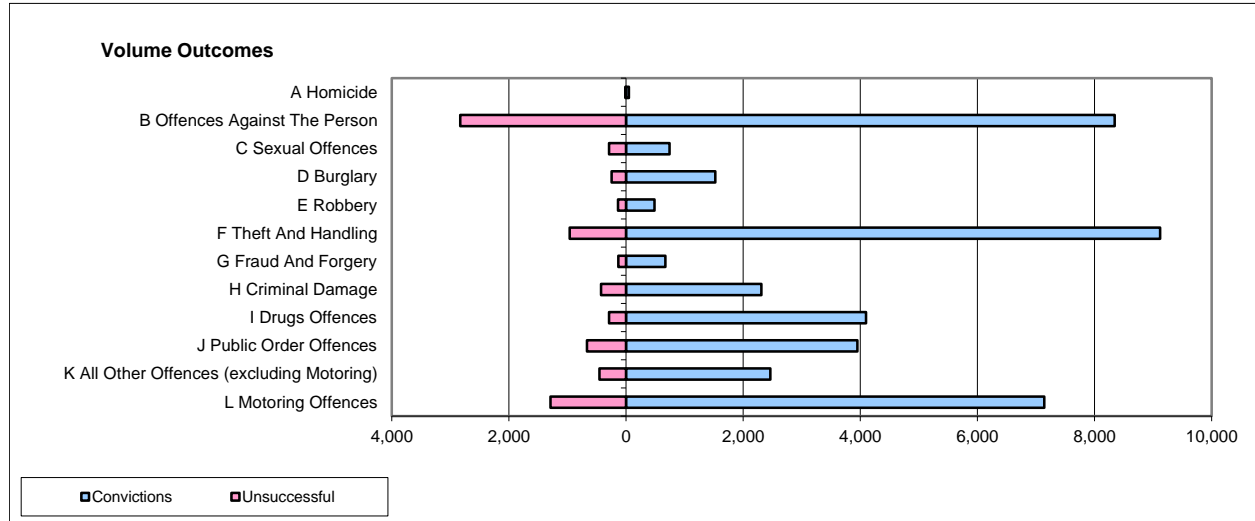
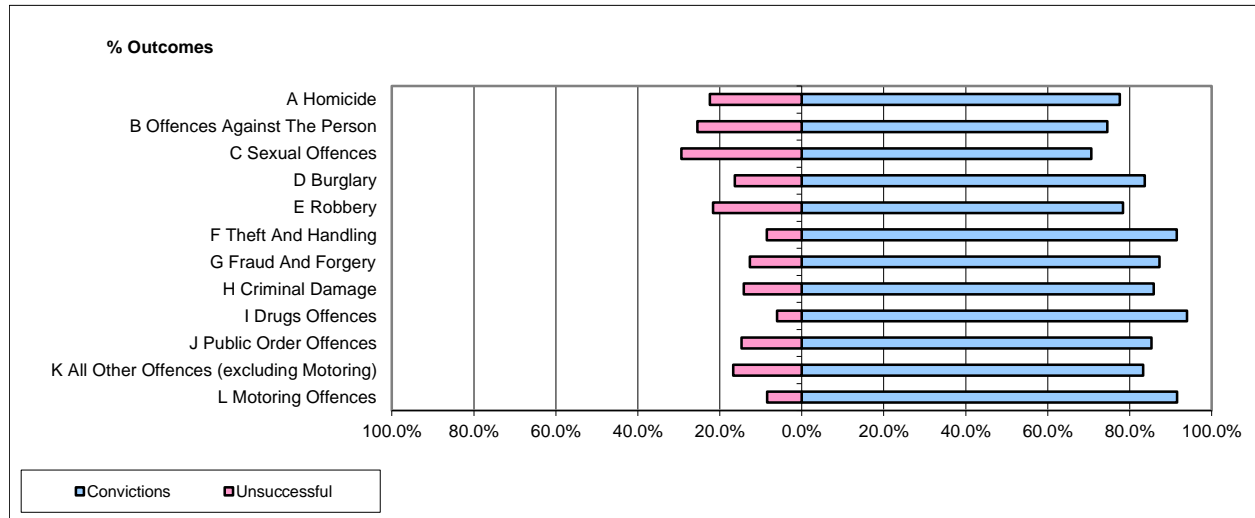


CPS OUTCOMES BY PRINCIPAL OFFENCE CATEGORY

Aug-14

National



	Convictions		Unsuccessful	
	Number of Defendants	%	Number of Defendants	%
A Homicide	45	76.3%	14	23.7%
B Offences Against The Person	8,342	74.6%	2,833	25.4%
C Sexual Offences	739	71.8%	290	28.2%
D Burglary	1,524	86.1%	247	13.9%
E Robbery	484	77.6%	140	22.4%
F Theft And Handling	9,119	90.4%	966	9.6%
G Fraud And Forgery	672	83.6%	132	16.4%
H Criminal Damage	2,310	84.4%	426	15.6%
I Drugs Offences	4,097	93.4%	289	6.6%
J Public Order Offences	3,950	85.6%	667	14.4%
K All Other Offences (excluding Motoring)	2,465	84.4%	454	15.6%
L Motoring Offences	7,141	84.7%	1,294	15.3%
Admin Finalisations	0	0.0%	736	100.0%
TOTAL	40,888	82.8%	8,488	17.2%

Please note that these data do not include Casework Divisions.