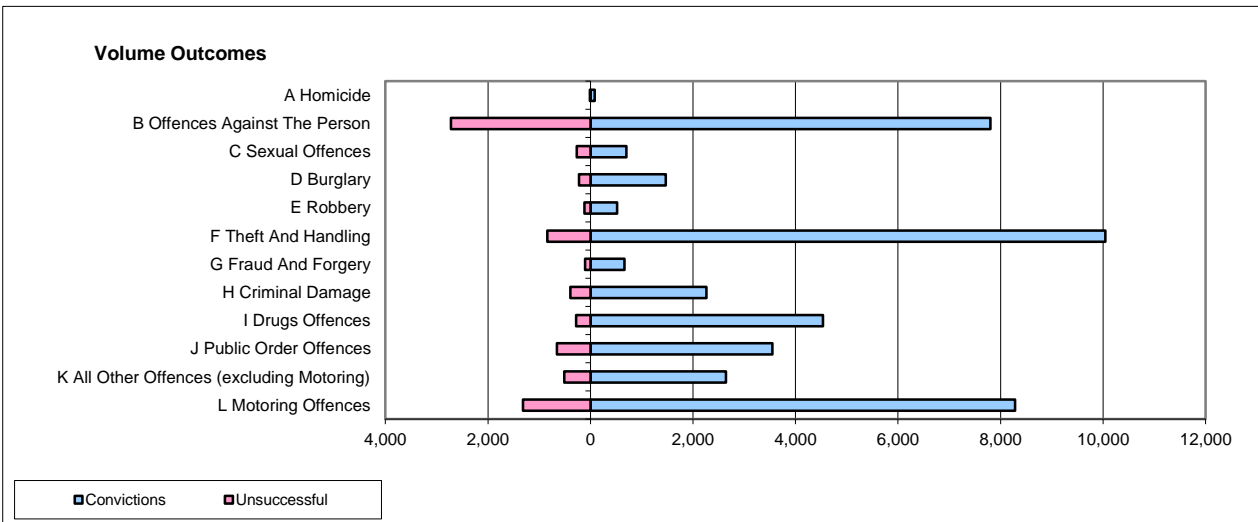
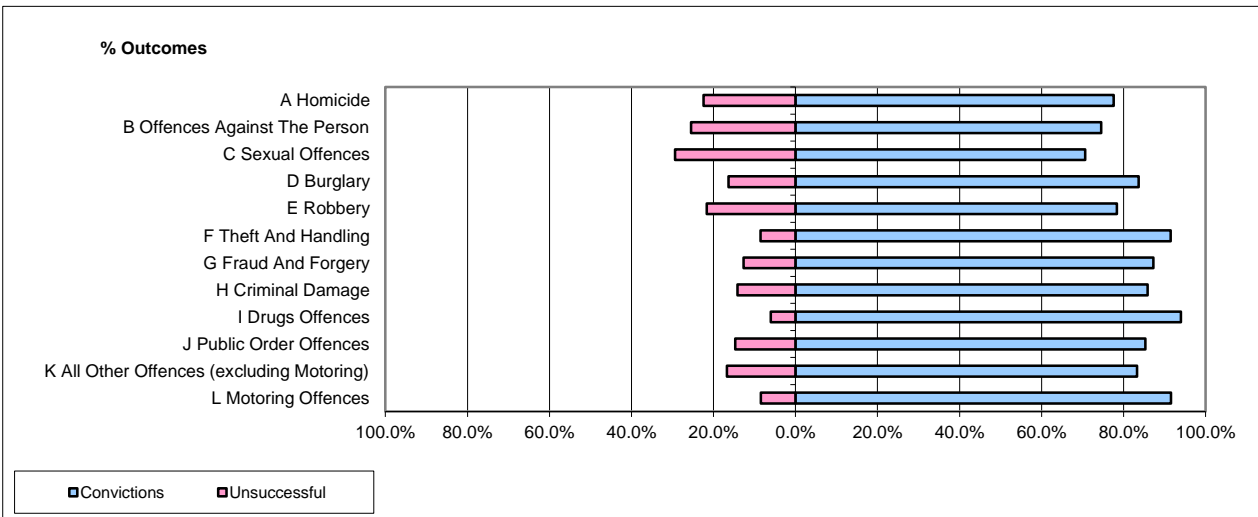


CPS OUTCOMES BY PRINCIPAL OFFENCE CATEGORY

Apr-14

National



	Convictions		Unsuccessful	
	Number of Defendants	%	Number of Defendants	%
A Homicide	81	85.3%	14	14.7%
B Offences Against The Person	7,805	74.1%	2,722	25.9%
C Sexual Offences	698	72.2%	269	27.8%
D Burglary	1,470	86.7%	226	13.3%
E Robbery	517	81.7%	116	18.3%
F Theft And Handling	10,045	92.3%	840	7.7%
G Fraud And Forgery	666	86.0%	108	14.0%
H Criminal Damage	2,259	85.2%	391	14.8%
I Drugs Offences	4,536	94.2%	279	5.8%
J Public Order Offences	3,549	84.4%	654	15.6%
K All Other Offences (excluding Motoring)	2,640	83.7%	513	16.3%
L Motoring Offences	8,283	86.3%	1,314	13.7%
Admin Finalisations	0	0.0%	718	100.0%
TOTAL	42,549	83.9%	8,164	16.1%

Please note that these data do not include Casework Divisions.