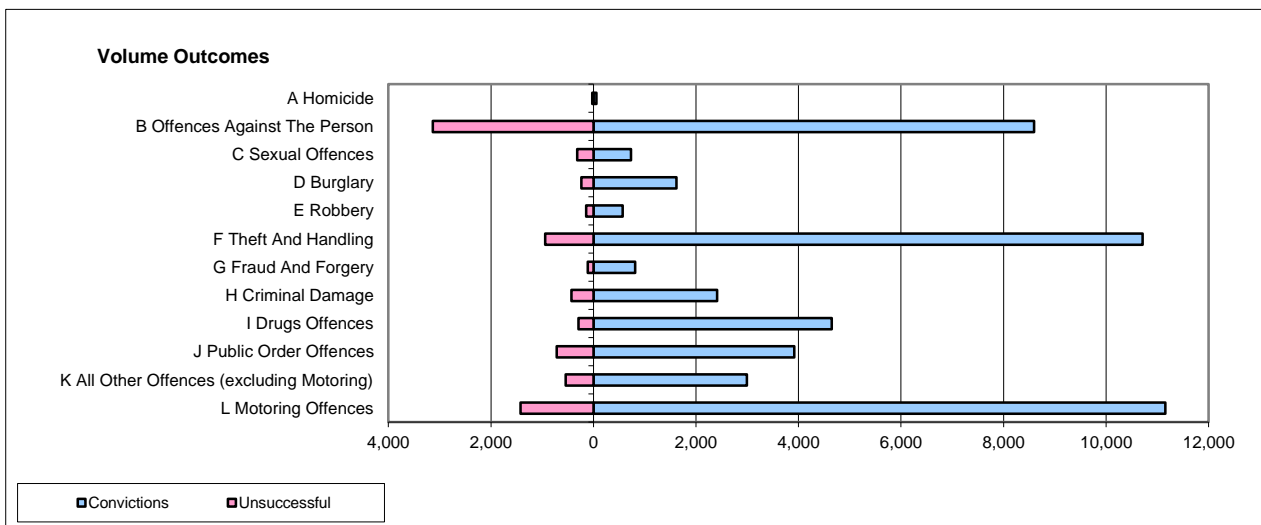
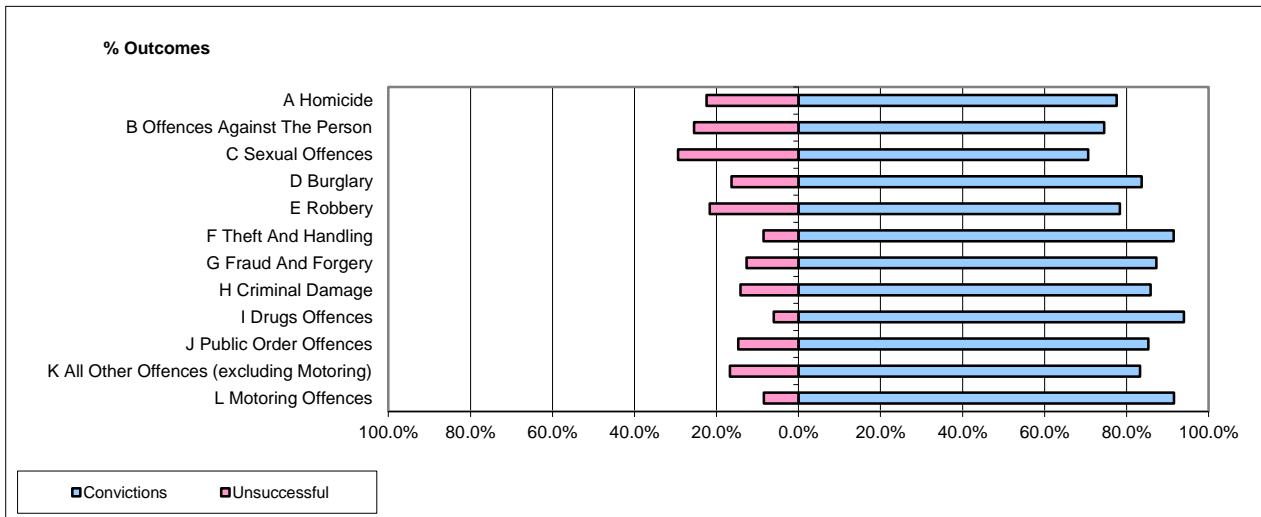


**CPS OUTCOMES BY PRINCIPAL OFFENCE CATEGORY**

**Mar-14**

**National**



	Convictions		Unsuccessful	
	Number of Defendants	%	Number of Defendants	%
<b>A Homicide</b>	57	72.2%	22	27.8%
<b>B Offences Against The Person</b>	8,595	73.3%	3,133	26.7%
<b>C Sexual Offences</b>	731	69.6%	320	30.4%
<b>D Burglary</b>	1,618	87.1%	239	12.9%
<b>E Robbery</b>	569	79.8%	144	20.2%
<b>F Theft And Handling</b>	10,716	91.9%	943	8.1%
<b>G Fraud And Forgery</b>	814	87.7%	114	12.3%
<b>H Criminal Damage</b>	2,413	84.8%	432	15.2%
<b>I Drugs Offences</b>	4,649	94.0%	295	6.0%
<b>J Public Order Offences</b>	3,920	84.5%	717	15.5%
<b>K All Other Offences (excluding Motoring)</b>	2,994	84.7%	541	15.3%
<b>L Motoring Offences</b>	11,155	88.7%	1,425	11.3%
<b>Admin Finalisations</b>	0	0.0%	633	100.0%
<b>TOTAL</b>	48,231	84.3%	8,958	15.7%

Please note that these data do not include Casework Divisions.