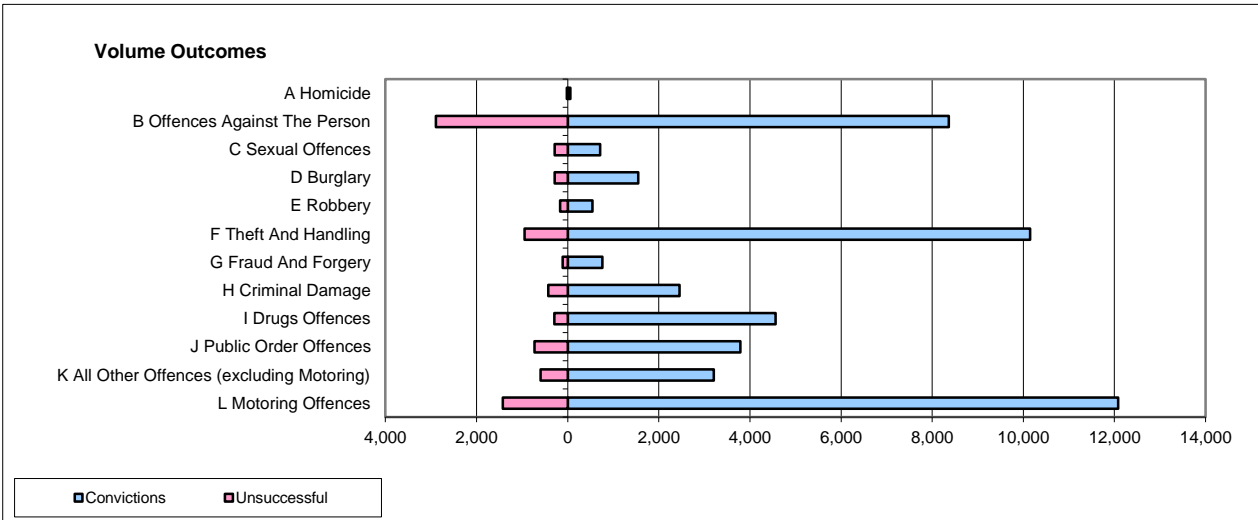
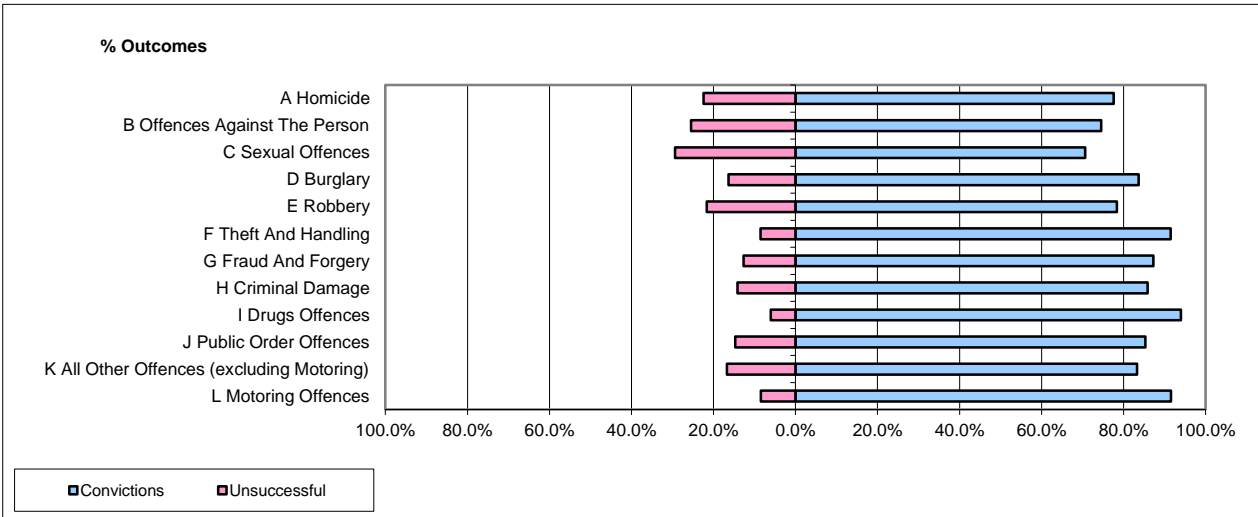


CPS OUTCOMES BY PRINCIPAL OFFENCE CATEGORY

Feb-14

National



	Convictions		Unsuccessful	
	Number of Defendants	%	Number of Defendants	%
A Homicide	61	77.2%	18	22.8%
B Offences Against The Person	8,366	74.3%	2,891	25.7%
C Sexual Offences	712	71.2%	288	28.8%
D Burglary	1,549	84.5%	284	15.5%
E Robbery	541	76.8%	163	23.2%
F Theft And Handling	10,150	91.5%	945	8.5%
G Fraud And Forgery	758	87.2%	111	12.8%
H Criminal Damage	2,455	85.2%	427	14.8%
I Drugs Offences	4,565	94.0%	292	6.0%
J Public Order Offences	3,787	83.8%	730	16.2%
K All Other Offences (excluding Motoring)	3,208	84.3%	597	15.7%
L Motoring Offences	12,078	89.4%	1,425	10.6%
Admin Finalisations	0	0.0%	816	100.0%
TOTAL	48,230	84.3%	8,987	15.7%

Please note that these data do not include Casework Divisions.