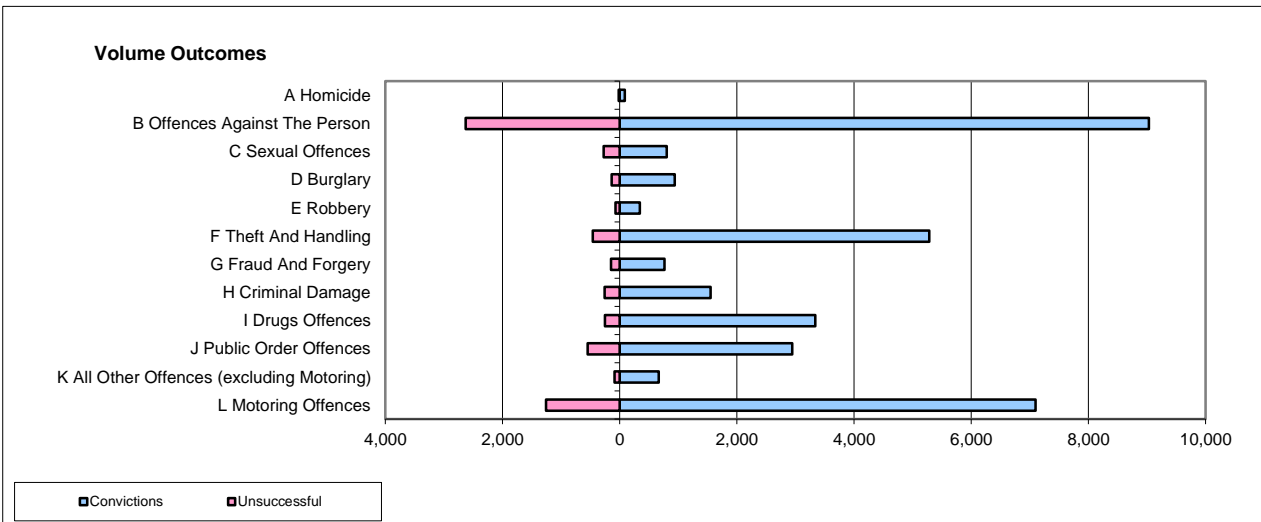
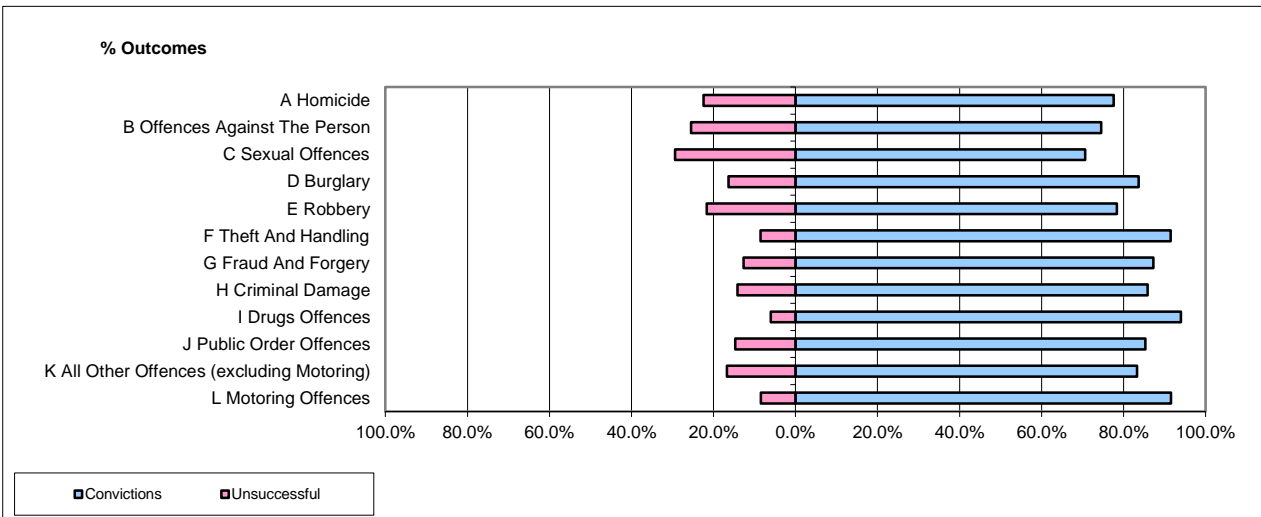


CPS OUTCOMES BY PRINCIPAL OFFENCE CATEGORY

Jun-18

National



	Convictions		Unsuccessful	
	Number of Defendants	%	Number of Defendants	%
A Homicide	87	82.9%	18	17.1%
B Offences Against The Person	9,034	77.4%	2,632	22.6%
C Sexual Offences	804	74.7%	273	25.3%
D Burglary	937	87.2%	138	12.8%
E Robbery	342	82.4%	73	17.6%
F Theft And Handling	5,283	92.0%	460	8.0%
G Fraud And Forgery	762	83.7%	148	16.3%
H Criminal Damage	1,550	85.7%	259	14.3%
I Drugs Offences	3,335	92.9%	255	7.1%
J Public Order Offences	2,944	84.3%	547	15.7%
K All Other Offences (excluding Motoring)	664	88.3%	88	11.7%
L Motoring Offences	7,099	84.9%	1,261	15.1%
Admin Finalisations	0	0.0%	924	100.0%
TOTAL	32,841	82.3%	7,076	17.7%

Please note that these data do not include Casework Divisions.

Source: Performance Indicator Universe, CPS Management Information System