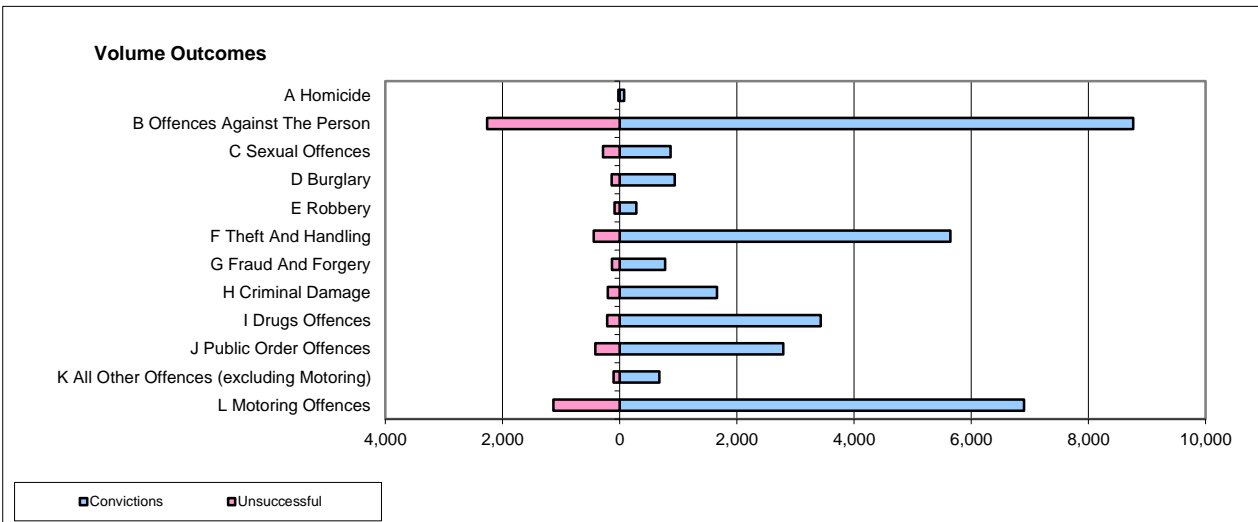
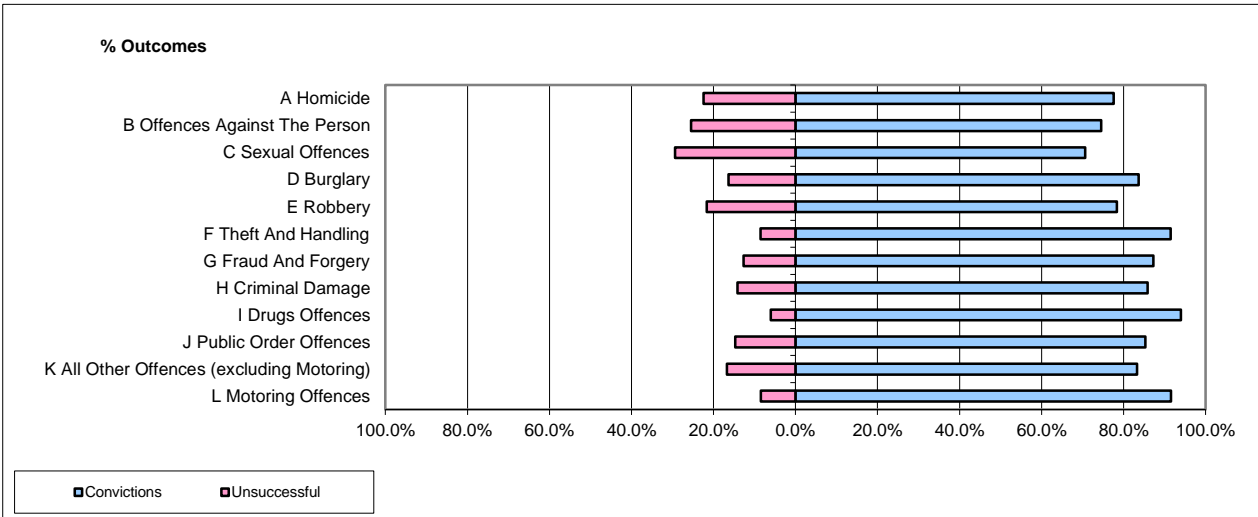


CPS OUTCOMES BY PRINCIPAL OFFENCE CATEGORY

Apr-18

National



	Convictions		Unsuccessful	
	Number of Defendants	%	Number of Defendants	%
A Homicide	77	77.8%	22	22.2%
B Offences Against The Person	8,766	79.5%	2,267	20.5%
C Sexual Offences	866	75.0%	288	25.0%
D Burglary	939	87.1%	139	12.9%
E Robbery	284	76.1%	89	23.9%
F Theft And Handling	5,644	92.7%	442	7.3%
G Fraud And Forgery	774	85.5%	131	14.5%
H Criminal Damage	1,662	89.2%	202	10.8%
I Drugs Offences	3,432	94.1%	217	5.9%
J Public Order Offences	2,793	87.0%	419	13.0%
K All Other Offences (excluding Motoring)	674	86.6%	104	13.4%
L Motoring Offences	6,903	85.9%	1,133	14.1%
Admin Finalisations	0	0.0%	760	100.0%
TOTAL	32,814	84.1%	6,213	15.9%

Please note that these data do not include Casework Divisions.