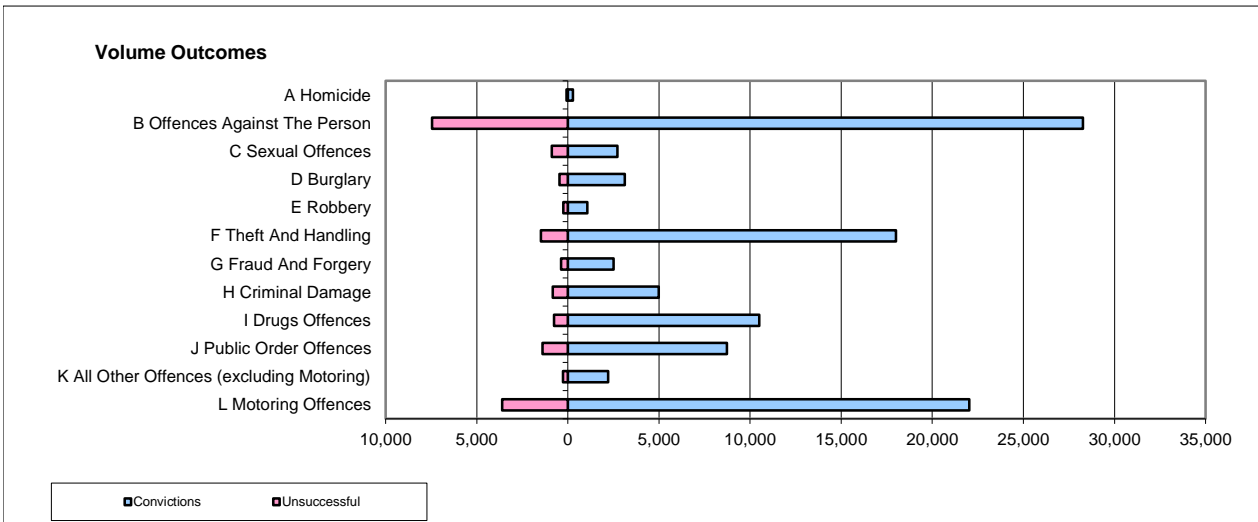
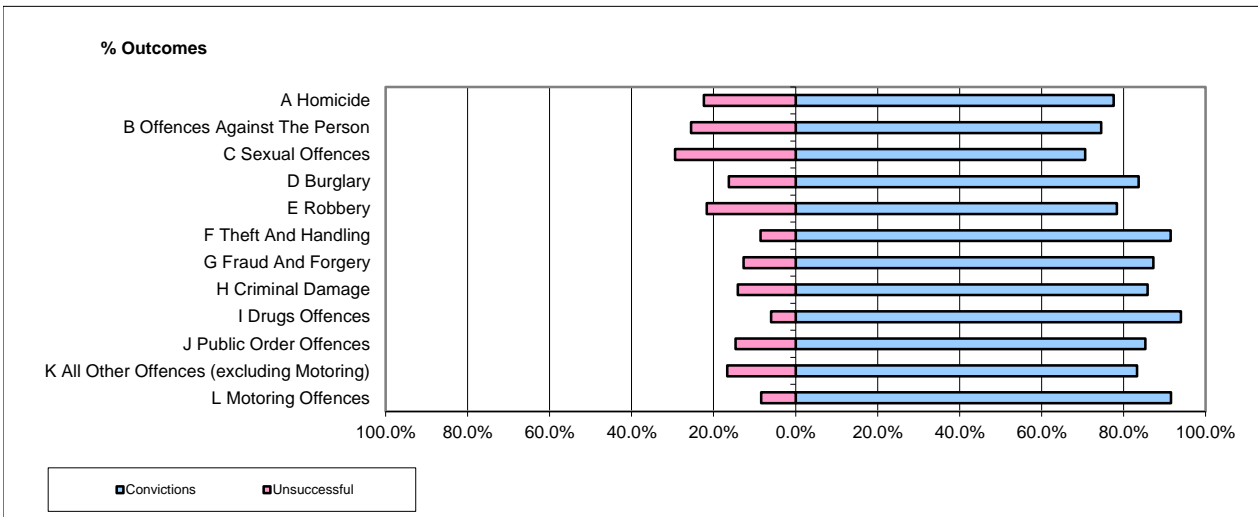


CPS OUTCOMES BY PRINCIPAL OFFENCE CATEGORY

17-18-Q4

National



	Convictions		Unsuccessful	
	Number of Defendants	%	Number of Defendants	%
A Homicide	280	80.5%	68	19.5%
B Offences Against The Person	28,269	79.2%	7,446	20.8%
C Sexual Offences	2,722	75.5%	885	24.5%
D Burglary	3,128	87.0%	468	13.0%
E Robbery	1,076	81.0%	252	19.0%
F Theft And Handling	18,008	92.4%	1,474	7.6%
G Fraud And Forgery	2,505	87.3%	366	12.7%
H Criminal Damage	4,992	85.9%	821	14.1%
I Drugs Offences	10,502	93.3%	752	6.7%
J Public Order Offences	8,737	86.2%	1,397	13.8%
K All Other Offences (excluding Motoring)	2,214	89.1%	272	10.9%
L Motoring Offences	22,033	85.9%	3,613	14.1%
Admin Finalisations	0	0.0%	2,808	100.0%
TOTAL	104,466	83.5%	20,622	16.5%

Please note that these data do not include Casework Divisions.