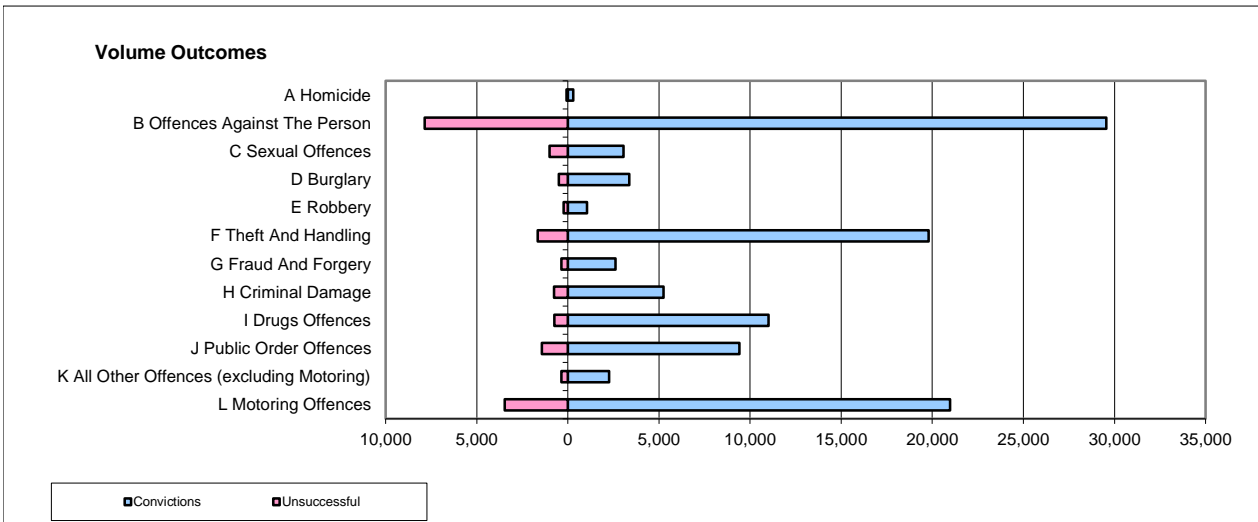
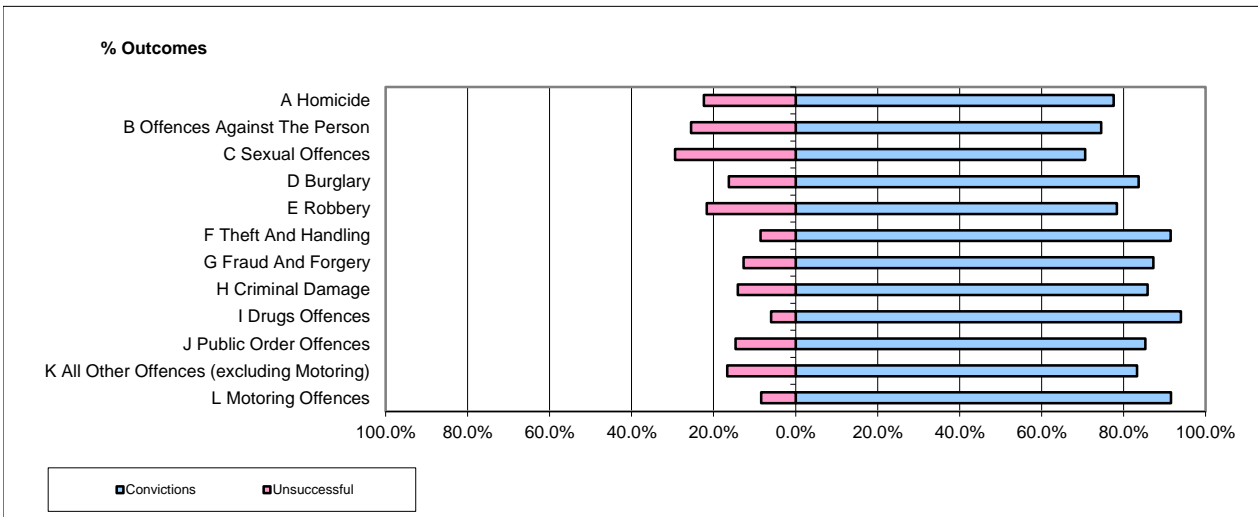


CPS OUTCOMES BY PRINCIPAL OFFENCE CATEGORY

17-18-Q1

National



	Convictions		Unsuccessful	
	Number of Defendants	%	Number of Defendants	%
A Homicide	302	81.2%	70	18.8%
B Offences Against The Person	29,551	79.0%	7,853	21.0%
C Sexual Offences	3,056	75.1%	1,013	24.9%
D Burglary	3,376	87.1%	499	12.9%
E Robbery	1,047	82.0%	230	18.0%
F Theft And Handling	19,794	92.3%	1,648	7.7%
G Fraud And Forgery	2,621	87.9%	361	12.1%
H Criminal Damage	5,242	87.3%	760	12.7%
I Drugs Offences	11,005	93.6%	749	6.4%
J Public Order Offences	9,417	86.8%	1,433	13.2%
K All Other Offences (excluding Motoring)	2,263	86.6%	349	13.4%
L Motoring Offences	20,980	85.8%	3,471	14.2%
Admin Finalisations	0	0.0%	2,419	100.0%
TOTAL	108,654	83.9%	20,855	16.1%

Please note that these data do not include Casework Divisions.