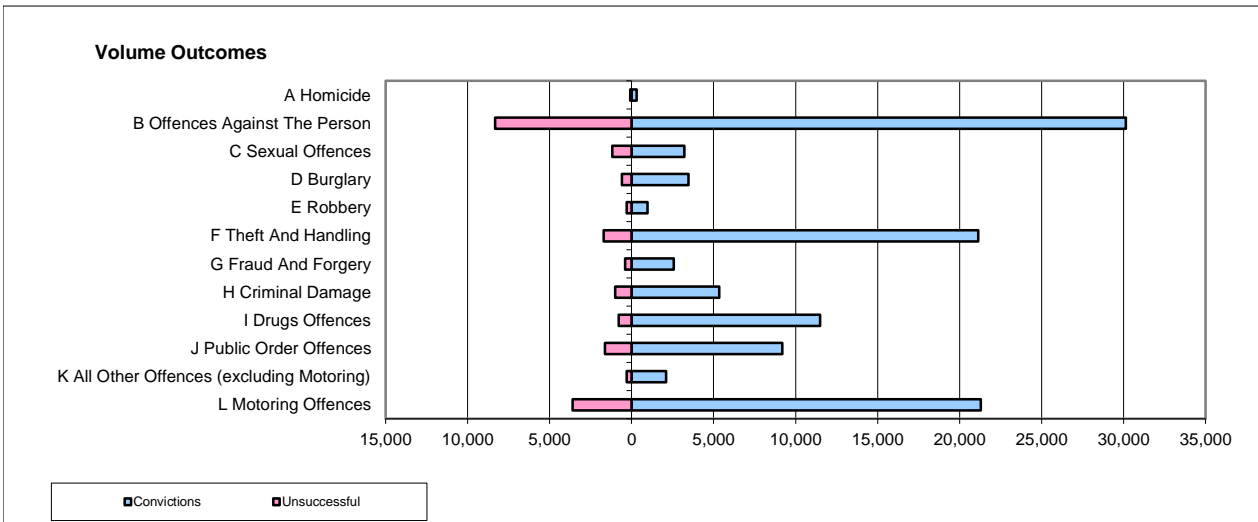
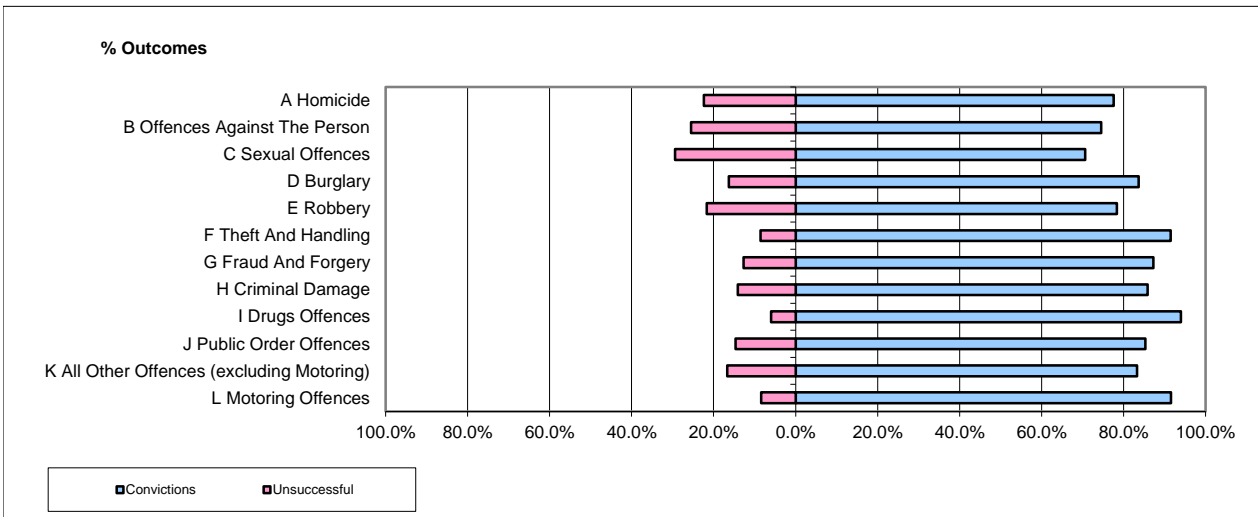


CPS OUTCOMES BY PRINCIPAL OFFENCE CATEGORY

16-17-Q3

National



	Convictions		Unsuccessful	
	Number of Defendants	%	Number of Defendants	%
A Homicide	306	78.9%	82	21.1%
B Offences Against The Person	30,132	78.4%	8,326	21.6%
C Sexual Offences	3,210	73.2%	1,176	26.8%
D Burglary	3,464	85.4%	590	14.6%
E Robbery	962	76.7%	293	23.3%
F Theft And Handling	21,130	92.5%	1,708	7.5%
G Fraud And Forgery	2,579	86.6%	399	13.4%
H Criminal Damage	5,333	84.1%	1,009	15.9%
I Drugs Offences	11,491	93.6%	788	6.4%
J Public Order Offences	9,195	85.0%	1,628	15.0%
K All Other Offences (excluding Motoring)	2,110	87.3%	307	12.7%
L Motoring Offences	21,294	85.5%	3,600	14.5%
Admin Finalisations	0	0.0%	2,606	100.0%
TOTAL	111,206	83.2%	22,512	16.8%

Please note that these data do not include Casework Divisions.