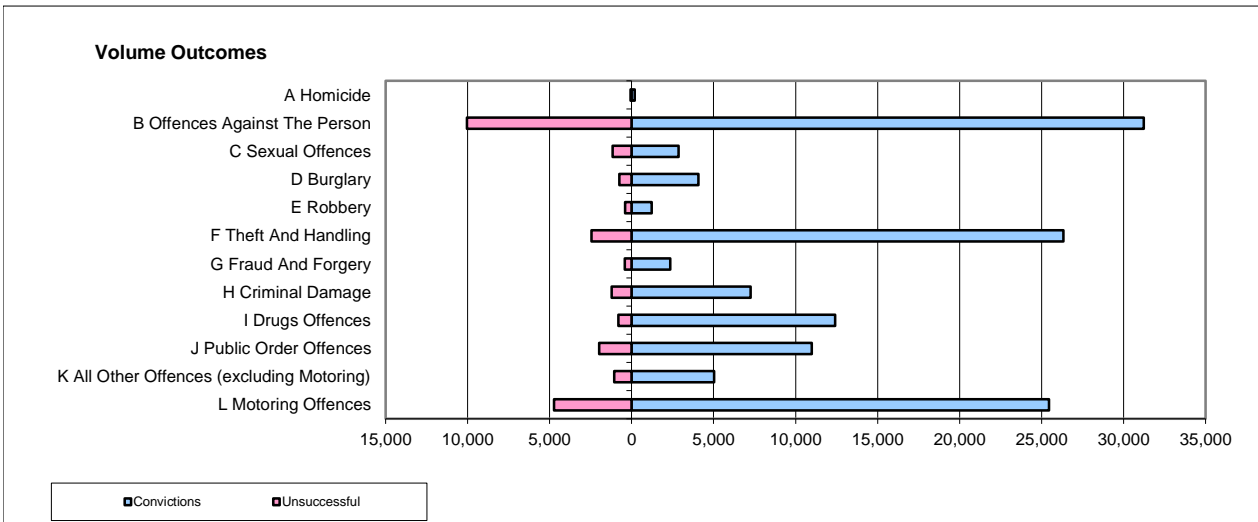
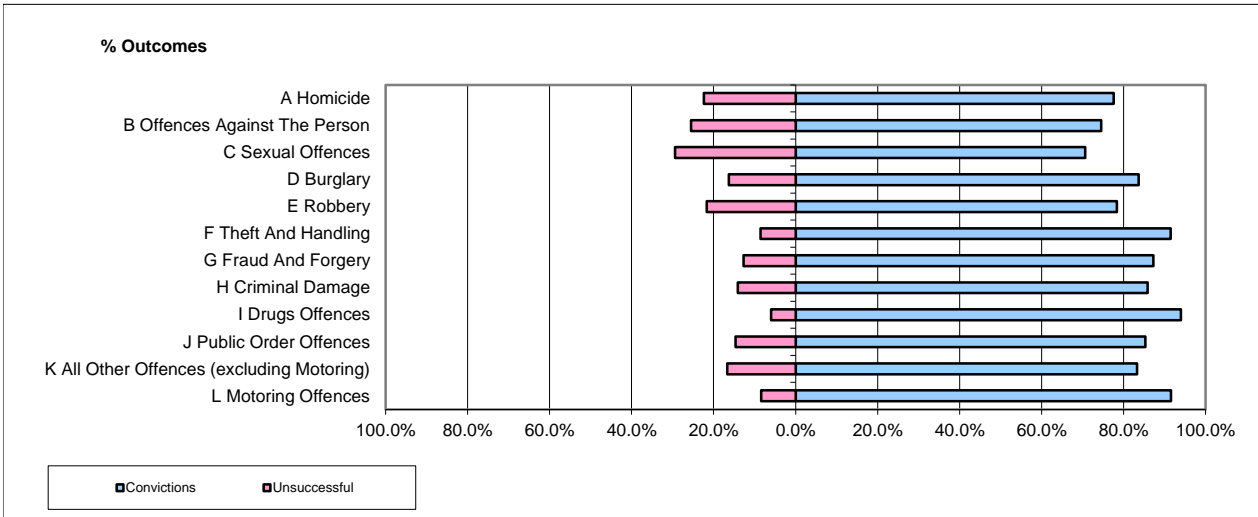


**CPS OUTCOMES BY PRINCIPAL OFFENCE CATEGORY**

**15-16-Q2**

**National**



	Convictions		Unsuccessful	
	Number of Defendants	%	Number of Defendants	%
<b>A Homicide</b>	193	76.0%	61	24.0%
<b>B Offences Against The Person</b>	31,235	75.7%	10,042	24.3%
<b>C Sexual Offences</b>	2,859	71.0%	1,169	29.0%
<b>D Burglary</b>	4,065	84.6%	742	15.4%
<b>E Robbery</b>	1,230	75.6%	396	24.4%
<b>F Theft And Handling</b>	26,333	91.5%	2,454	8.5%
<b>G Fraud And Forgery</b>	2,351	84.8%	420	15.2%
<b>H Criminal Damage</b>	7,246	85.5%	1,225	14.5%
<b>I Drugs Offences</b>	12,408	93.8%	814	6.2%
<b>J Public Order Offences</b>	10,978	84.8%	1,974	15.2%
<b>K All Other Offences (excluding Motoring)</b>	5,030	82.5%	1,065	17.5%
<b>L Motoring Offences</b>	25,455	84.3%	4,742	15.7%
<b>Admin Finalisations</b>	0	0.0%	2,759	100.0%
<b>TOTAL</b>	129,383	82.3%	27,863	17.7%

Please note that these data do not include Casework Divisions.