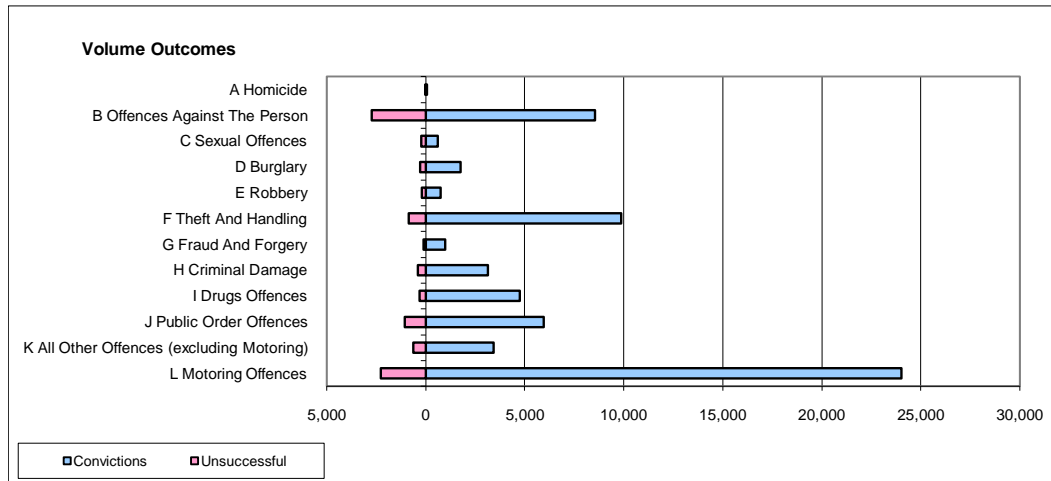
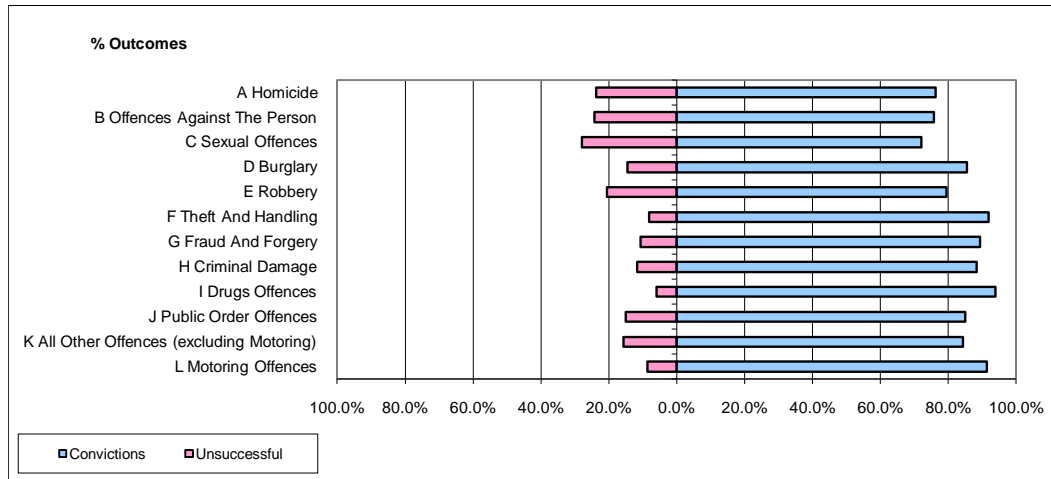


CPS OUTCOMES BY PRINCIPAL OFFENCE CATEGORY

January 2010

42 Areas



	Convictions		Unsuccessful	
	Number of Defendants	%	Number of Defendants	%
A Homicide	58	76.3%	18	23.7%
B Offences Against The Person	8,555	75.7%	2,739	24.3%
C Sexual Offences	597	72.0%	232	28.0%
D Burglary	1,754	85.5%	298	14.5%
E Robbery	742	79.4%	192	20.6%
F Theft And Handling	9,862	91.9%	866	8.1%
G Fraud And Forgery	984	89.3%	118	10.7%
H Criminal Damage	3,126	88.4%	411	11.6%
I Drugs Offences	4,748	94.0%	305	6.0%
J Public Order Offences	5,959	85.0%	1,055	15.0%
K All Other Offences (excluding Motoring)	3,436	84.3%	638	15.7%
L Motoring Offences	24,021	91.4%	2,263	8.6%
Admin Finalisations	0	0.0%	952	100.0%
TOTAL	63,842	86.4%	10,087	13.6%