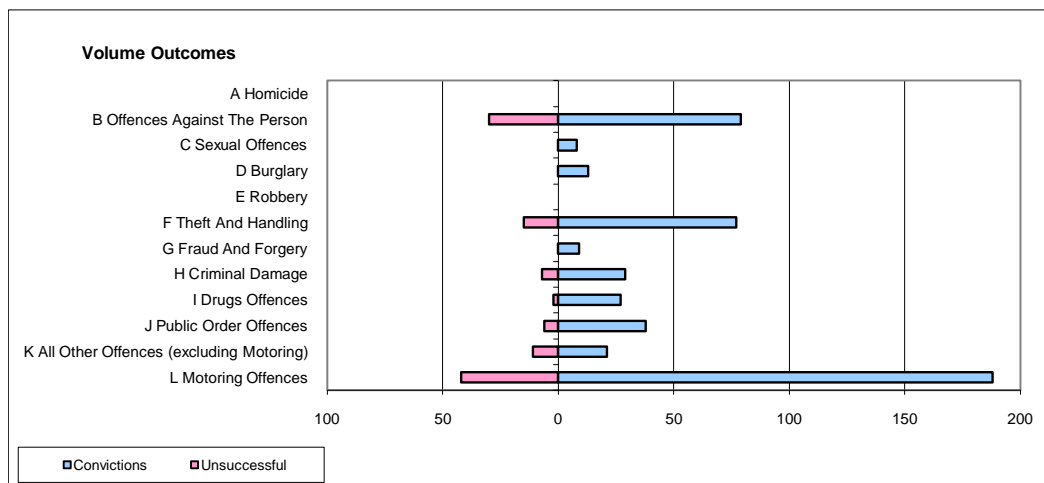
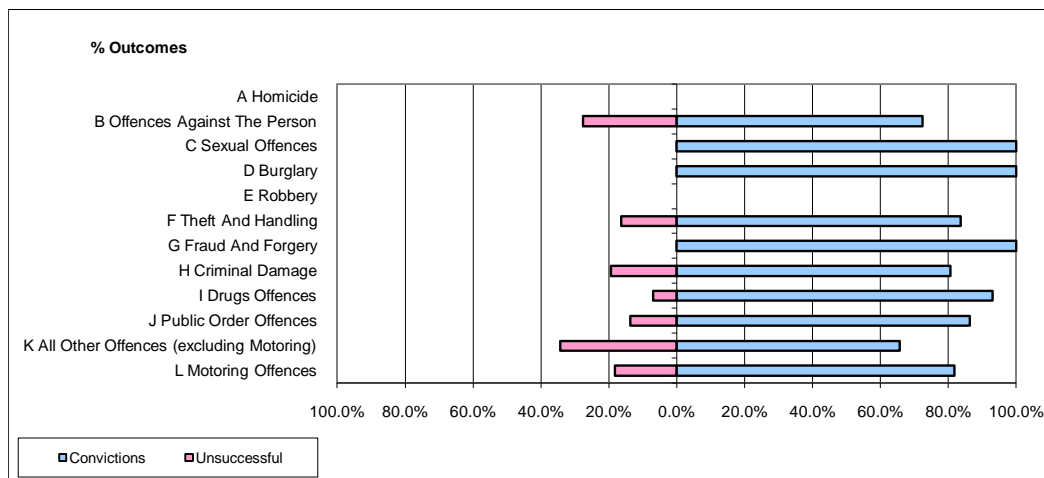


CPS OUTCOMES BY PRINCIPAL OFFENCE CATEGORY

January 2010

P43-Wiltshire



	Convictions		Unsuccessful	
	Number of Defendants	%	Number of Defendants	%
A Homicide	0	0	0	0
B Offences Against The Person	79	72.5%	30	27.5%
C Sexual Offences	8	100.0%	0	0.0%
D Burglary	13	100.0%	0	0.0%
E Robbery	0	0	0	0
F Theft And Handling	77	83.7%	15	16.3%
G Fraud And Forgery	9	100.0%	0	0.0%
H Criminal Damage	29	80.6%	7	19.4%
I Drugs Offences	27	93.1%	2	6.9%
J Public Order Offences	38	86.4%	6	13.6%
K All Other Offences (excluding Motoring)	21	65.6%	11	34.4%
L Motoring Offences	188	81.7%	42	18.3%
Admin Finalisations	0	0.0%	9	100.0%
TOTAL	489	80.0%	122	20.0%