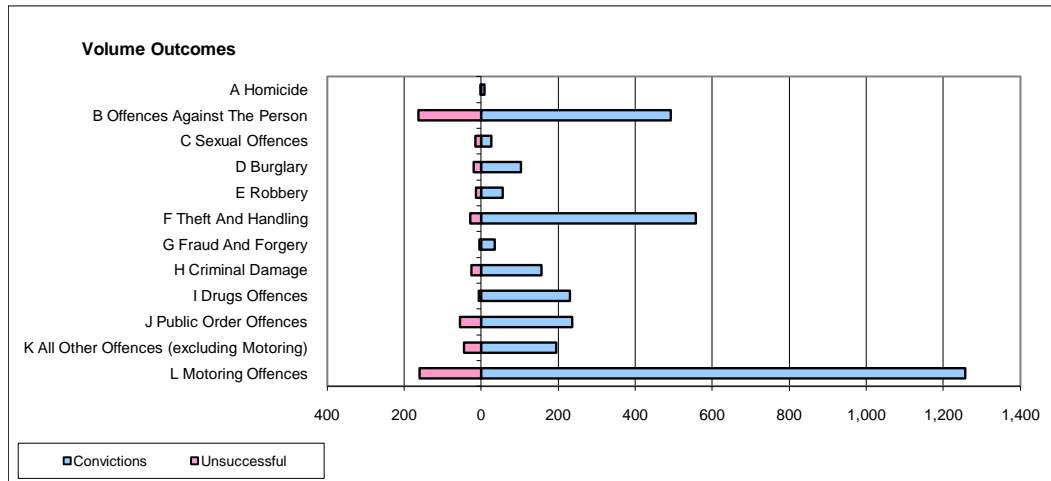
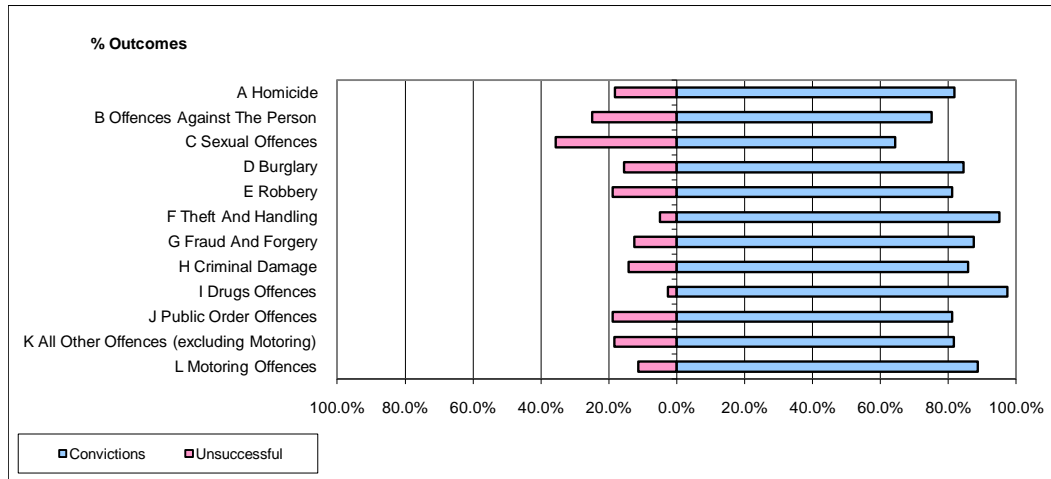


CPS OUTCOMES BY PRINCIPAL OFFENCE CATEGORY

January 2010

P41-WestMidlands



| | Convictions | | Unsuccessful | |
|--------------------------------------------------|----------------------|--------------|----------------------|---------------|
| | Number of Defendants | % | Number of Defendants | % |
| A Homicide | 9 | 81.8% | 2 | 18.2% |
| B Offences Against The Person | 493 | 75.2% | 163 | 24.8% |
| C Sexual Offences | 27 | 64.3% | 15 | 35.7% |
| D Burglary | 103 | 84.4% | 19 | 15.6% |
| E Robbery | 56 | 81.2% | 13 | 18.8% |
| F Theft And Handling | 557 | 95.1% | 29 | 4.9% |
| G Fraud And Forgery | 35 | 87.5% | 5 | 12.5% |
| H Criminal Damage | 157 | 85.8% | 26 | 14.2% |
| I Drugs Offences | 231 | 97.5% | 6 | 2.5% |
| J Public Order Offences | 236 | 81.1% | 55 | 18.9% |
| K All Other Offences (excluding Motoring) | 195 | 81.6% | 44 | 18.4% |
| L Motoring Offences | 1,258 | 88.7% | 160 | 11.3% |
| Admin Finalisations | 0 | 0.0% | 24 | 100.0% |
| TOTAL | 3,357 | 85.7% | 561 | 14.3% |