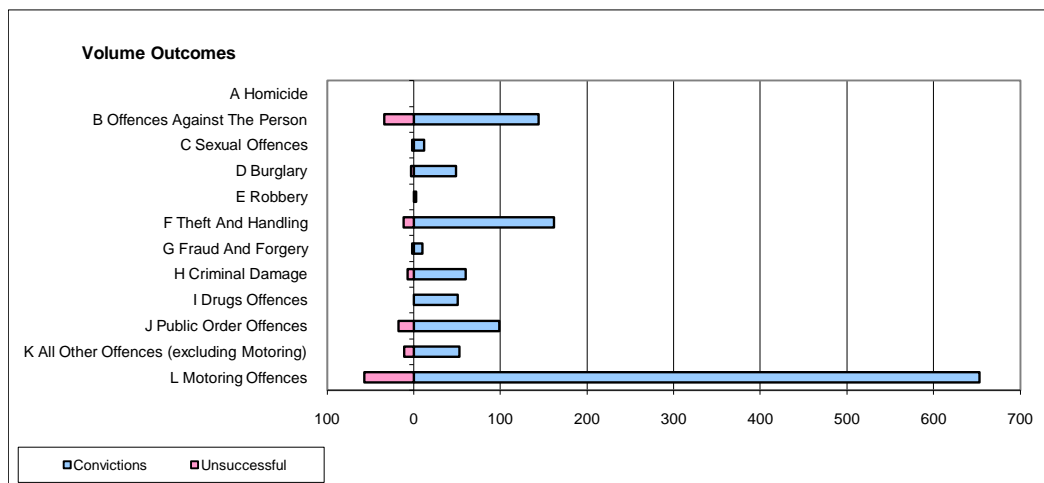
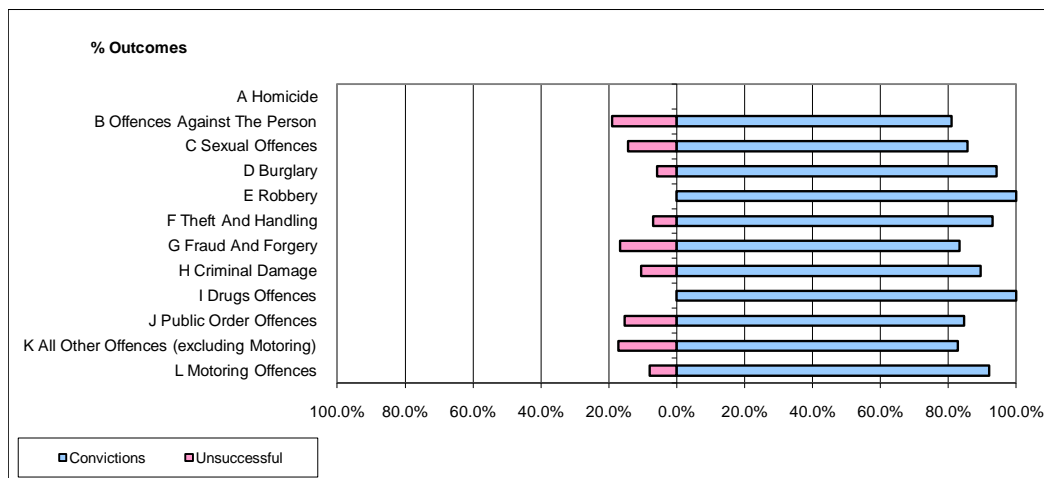


**CPS OUTCOMES BY PRINCIPAL OFFENCE CATEGORY**

January 2010

**P40-WestMercia**



	Convictions		Unsuccessful	
	Number of Defendants	%	Number of Defendants	%
<b>A Homicide</b>	<b>0</b>	<b>0</b>	<b>0</b>	<b>0</b>
<b>B Offences Against The Person</b>	<b>144</b>	<b>80.9%</b>	<b>34</b>	<b>19.1%</b>
<b>C Sexual Offences</b>	<b>12</b>	<b>85.7%</b>	<b>2</b>	<b>14.3%</b>
<b>D Burglary</b>	<b>49</b>	<b>94.2%</b>	<b>3</b>	<b>5.8%</b>
<b>E Robbery</b>	<b>3</b>	<b>100.0%</b>	<b>0</b>	<b>0.0%</b>
<b>F Theft And Handling</b>	<b>162</b>	<b>93.1%</b>	<b>12</b>	<b>6.9%</b>
<b>G Fraud And Forgery</b>	<b>10</b>	<b>83.3%</b>	<b>2</b>	<b>16.7%</b>
<b>H Criminal Damage</b>	<b>60</b>	<b>89.6%</b>	<b>7</b>	<b>10.4%</b>
<b>I Drugs Offences</b>	<b>51</b>	<b>100.0%</b>	<b>0</b>	<b>0.0%</b>
<b>J Public Order Offences</b>	<b>99</b>	<b>84.6%</b>	<b>18</b>	<b>15.4%</b>
<b>K All Other Offences (excluding Motoring)</b>	<b>53</b>	<b>82.8%</b>	<b>11</b>	<b>17.2%</b>
<b>L Motoring Offences</b>	<b>653</b>	<b>92.0%</b>	<b>57</b>	<b>8.0%</b>
<b>Admin Finalisations</b>	<b>0</b>	<b>0.0%</b>	<b>17</b>	<b>100.0%</b>
<b>TOTAL</b>	<b>1,296</b>	<b>88.8%</b>	<b>163</b>	<b>11.2%</b>