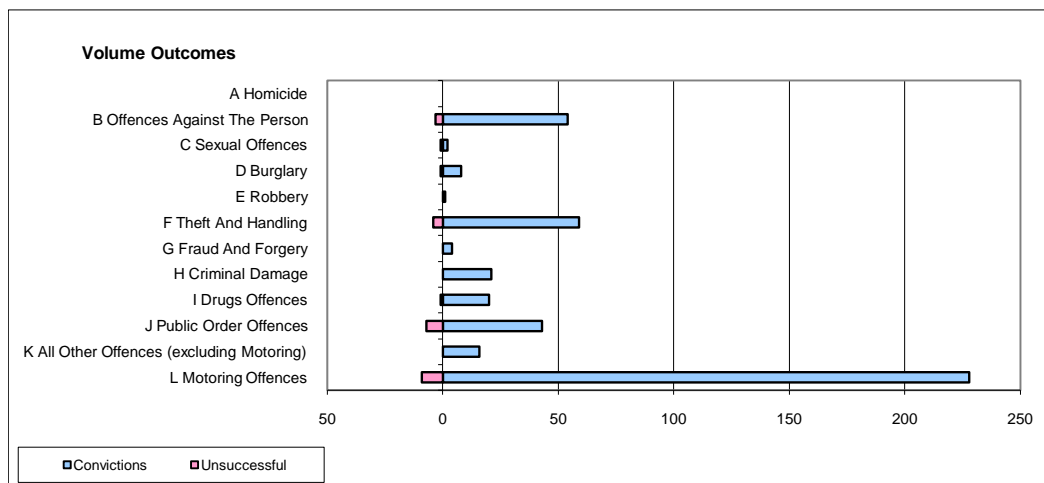
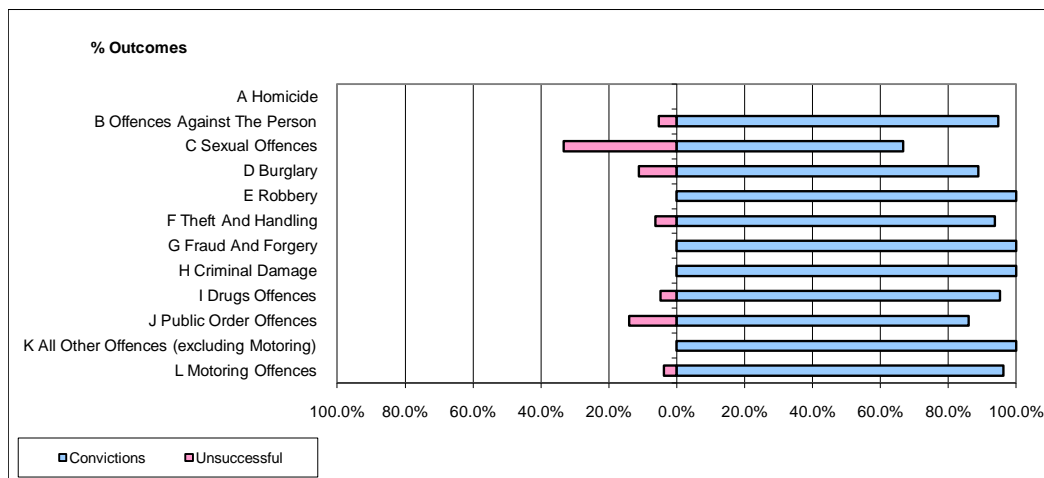


CPS OUTCOMES BY PRINCIPAL OFFENCE CATEGORY

January 2010

P39-Warwickshire



	Convictions		Unsuccessful	
	Number of Defendants	%	Number of Defendants	%
A Homicide	0	0	0	0
B Offences Against The Person	54	94.7%	3	5.3%
C Sexual Offences	2	66.7%	1	33.3%
D Burglary	8	88.9%	1	11.1%
E Robbery	1	100.0%	0	0.0%
F Theft And Handling	59	93.7%	4	6.3%
G Fraud And Forgery	4	100.0%	0	0.0%
H Criminal Damage	21	100.0%	0	0.0%
I Drugs Offences	20	95.2%	1	4.8%
J Public Order Offences	43	86.0%	7	14.0%
K All Other Offences (excluding Motoring)	16	100.0%	0	0.0%
L Motoring Offences	228	96.2%	9	3.8%
Admin Finalisations	0	0.0%	3	100.0%
TOTAL	456	94.0%	29	6.0%