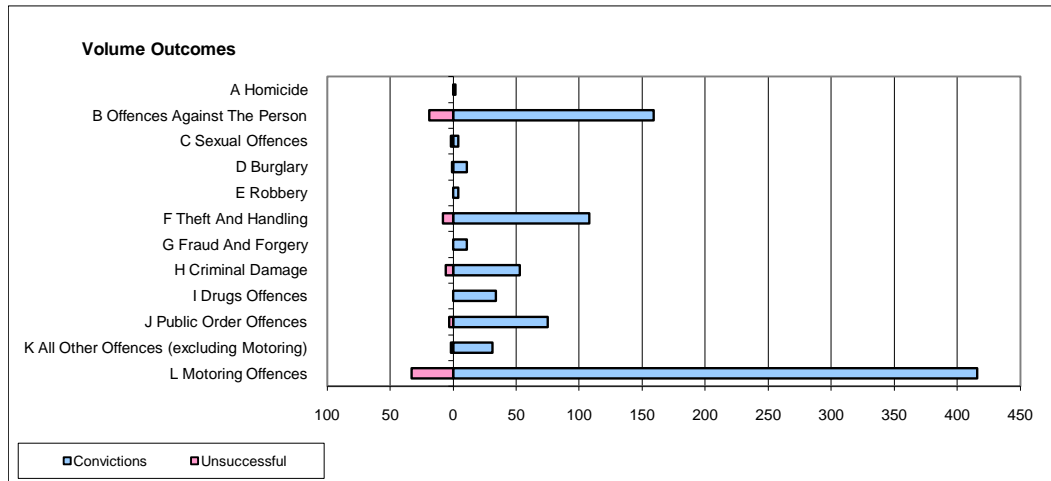
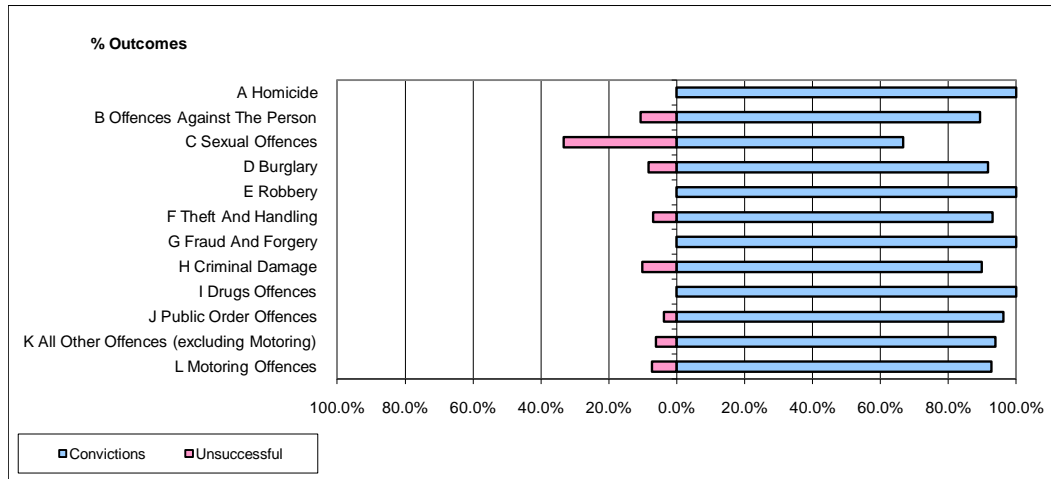


**CPS OUTCOMES BY PRINCIPAL OFFENCE CATEGORY**

January 2010

**P35-Suffolk**



	Convictions		Unsuccessful	
	Number of Defendants	%	Number of Defendants	%
<b>A Homicide</b>	<b>2</b>	<b>100.0%</b>	<b>0</b>	<b>0.0%</b>
<b>B Offences Against The Person</b>	<b>159</b>	<b>89.3%</b>	<b>19</b>	<b>10.7%</b>
<b>C Sexual Offences</b>	<b>4</b>	<b>66.7%</b>	<b>2</b>	<b>33.3%</b>
<b>D Burglary</b>	<b>11</b>	<b>91.7%</b>	<b>1</b>	<b>8.3%</b>
<b>E Robbery</b>	<b>4</b>	<b>100.0%</b>	<b>0</b>	<b>0.0%</b>
<b>F Theft And Handling</b>	<b>108</b>	<b>93.1%</b>	<b>8</b>	<b>6.9%</b>
<b>G Fraud And Forgery</b>	<b>11</b>	<b>100.0%</b>	<b>0</b>	<b>0.0%</b>
<b>H Criminal Damage</b>	<b>53</b>	<b>89.8%</b>	<b>6</b>	<b>10.2%</b>
<b>I Drugs Offences</b>	<b>34</b>	<b>100.0%</b>	<b>0</b>	<b>0.0%</b>
<b>J Public Order Offences</b>	<b>75</b>	<b>96.2%</b>	<b>3</b>	<b>3.8%</b>
<b>K All Other Offences (excluding Motoring)</b>	<b>31</b>	<b>93.9%</b>	<b>2</b>	<b>6.1%</b>
<b>L Motoring Offences</b>	<b>416</b>	<b>92.7%</b>	<b>33</b>	<b>7.3%</b>
<b>Admin Finalisations</b>	<b>0</b>	<b>0.0%</b>	<b>9</b>	<b>100.0%</b>
<b>TOTAL</b>	<b>908</b>	<b>91.6%</b>	<b>83</b>	<b>8.4%</b>