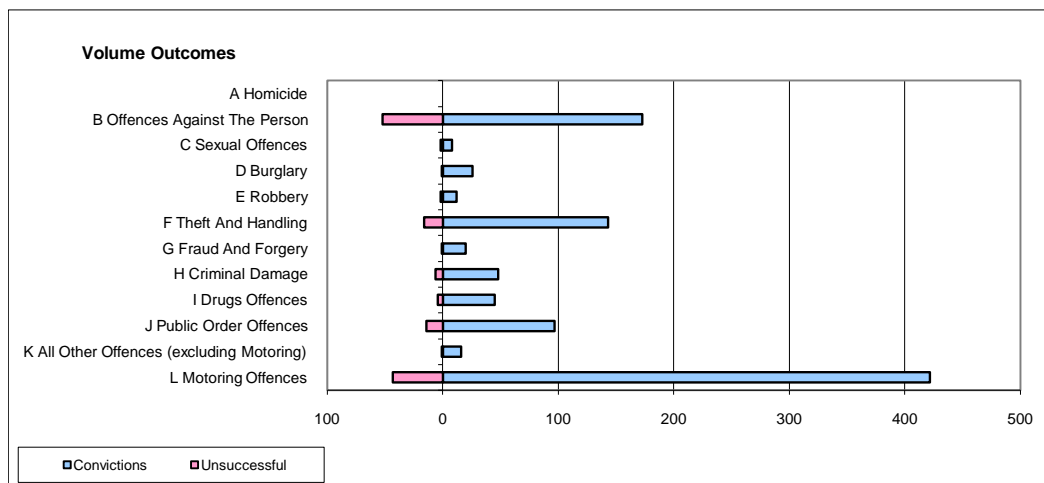
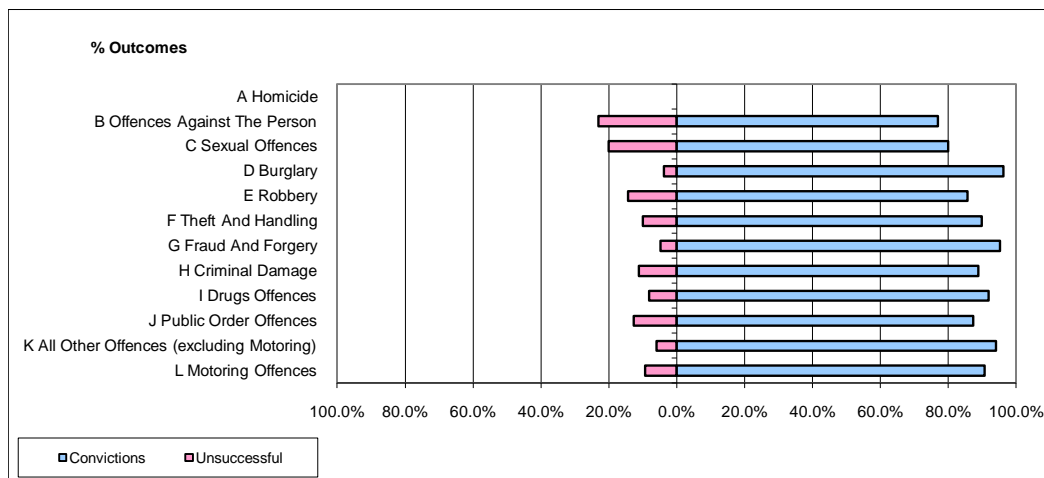


CPS OUTCOMES BY PRINCIPAL OFFENCE CATEGORY

January 2010

P34-Staffordshire



	Convictions		Unsuccessful	
	Number of Defendants	%	Number of Defendants	%
A Homicide	0	0	0	0
B Offences Against The Person	173	76.9%	52	23.1%
C Sexual Offences	8	80.0%	2	20.0%
D Burglary	26	96.3%	1	3.7%
E Robbery	12	85.7%	2	14.3%
F Theft And Handling	143	89.9%	16	10.1%
G Fraud And Forgery	20	95.2%	1	4.8%
H Criminal Damage	48	88.9%	6	11.1%
I Drugs Offences	45	91.8%	4	8.2%
J Public Order Offences	97	87.4%	14	12.6%
K All Other Offences (excluding Motoring)	16	94.1%	1	5.9%
L Motoring Offences	422	90.8%	43	9.2%
Admin Finalisations	0	0.0%	7	100.0%
TOTAL	1,010	87.1%	149	12.9%