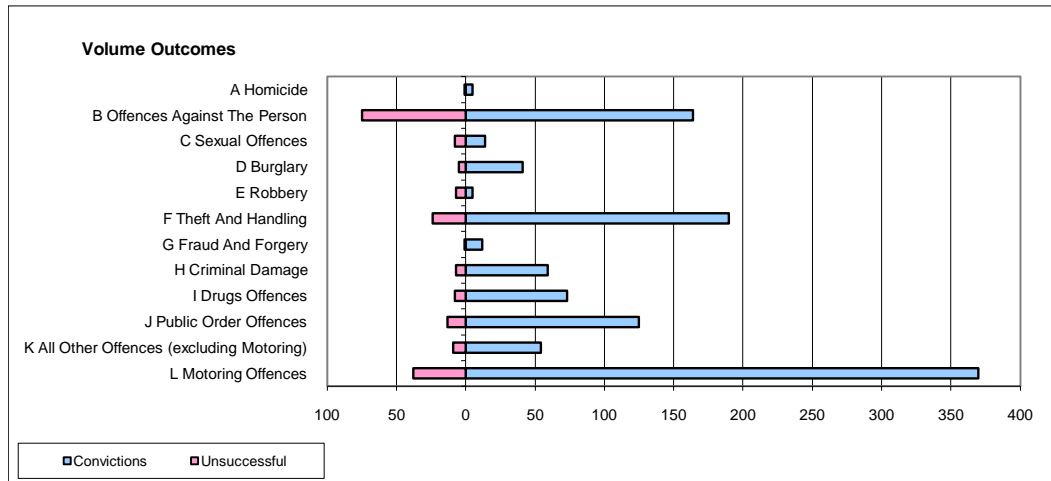
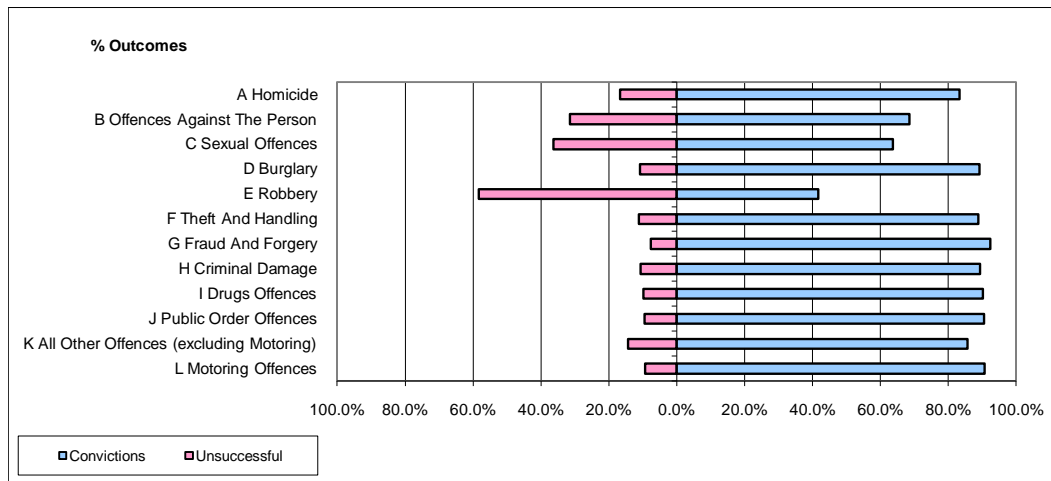


CPS OUTCOMES BY PRINCIPAL OFFENCE CATEGORY

January 2010

P31-Nottinghamshire



	Convictions		Unsuccessful	
	Number of Defendants	%	Number of Defendants	%
A Homicide	5	83.3%	1	16.7%
B Offences Against The Person	164	68.6%	75	31.4%
C Sexual Offences	14	63.6%	8	36.4%
D Burglary	41	89.1%	5	10.9%
E Robbery	5	41.7%	7	58.3%
F Theft And Handling	190	88.8%	24	11.2%
G Fraud And Forgery	12	92.3%	1	7.7%
H Criminal Damage	59	89.4%	7	10.6%
I Drugs Offences	73	90.1%	8	9.9%
J Public Order Offences	125	90.6%	13	9.4%
K All Other Offences (excluding Motoring)	54	85.7%	9	14.3%
L Motoring Offences	370	90.7%	38	9.3%
Admin Finalisations	0	0.0%	18	100.0%
TOTAL	1,112	83.9%	214	16.1%