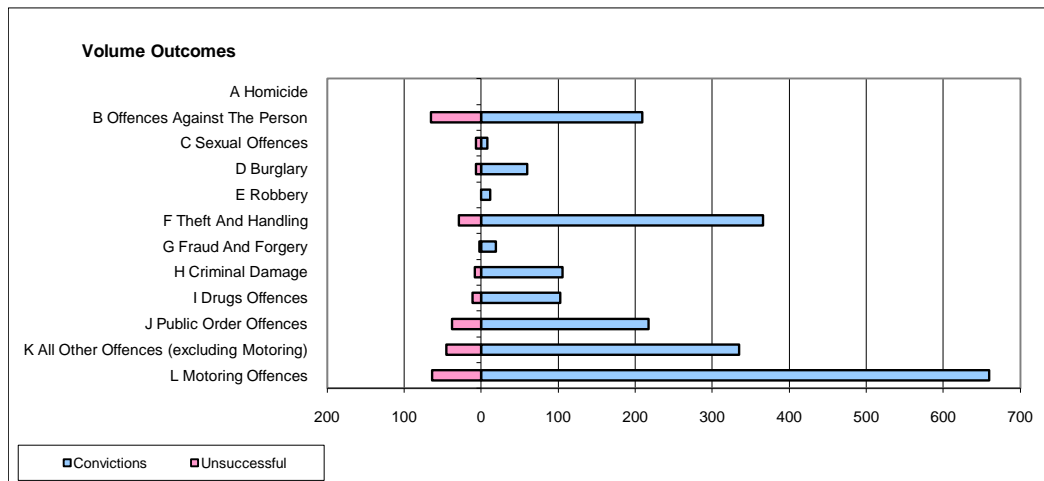
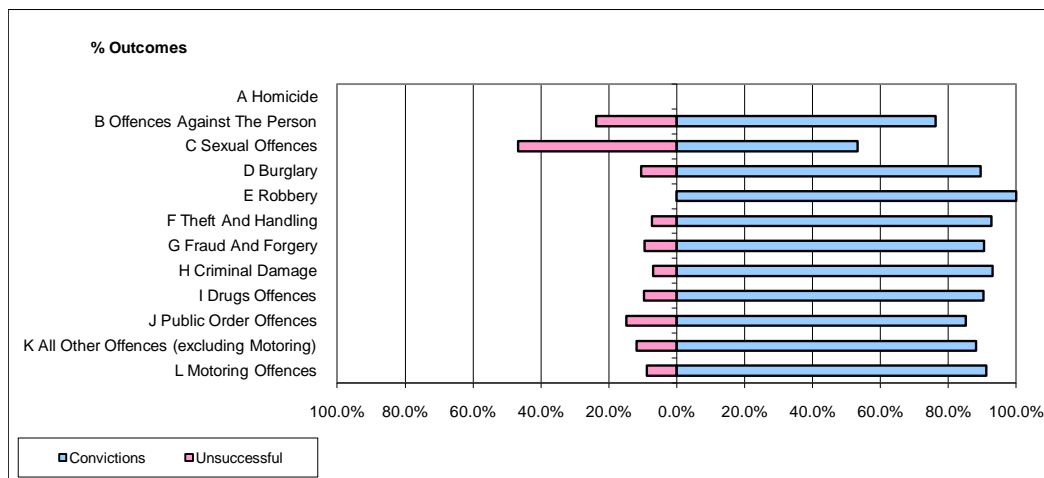


CPS OUTCOMES BY PRINCIPAL OFFENCE CATEGORY

January 2010

P28-Northumbria



	Convictions		Unsuccessful	
	Number of Defendants	%	Number of Defendants	%
A Homicide	0	0	0	0
B Offences Against The Person	209	76.3%	65	23.7%
C Sexual Offences	8	53.3%	7	46.7%
D Burglary	60	89.6%	7	10.4%
E Robbery	12	100.0%	0	0.0%
F Theft And Handling	366	92.7%	29	7.3%
G Fraud And Forgery	19	90.5%	2	9.5%
H Criminal Damage	106	93.0%	8	7.0%
I Drugs Offences	103	90.4%	11	9.6%
J Public Order Offences	217	85.1%	38	14.9%
K All Other Offences (excluding Motoring)	335	88.2%	45	11.8%
L Motoring Offences	660	91.2%	64	8.8%
Admin Finalisations	0	0.0%	15	100.0%
TOTAL	2,095	87.8%	291	12.2%