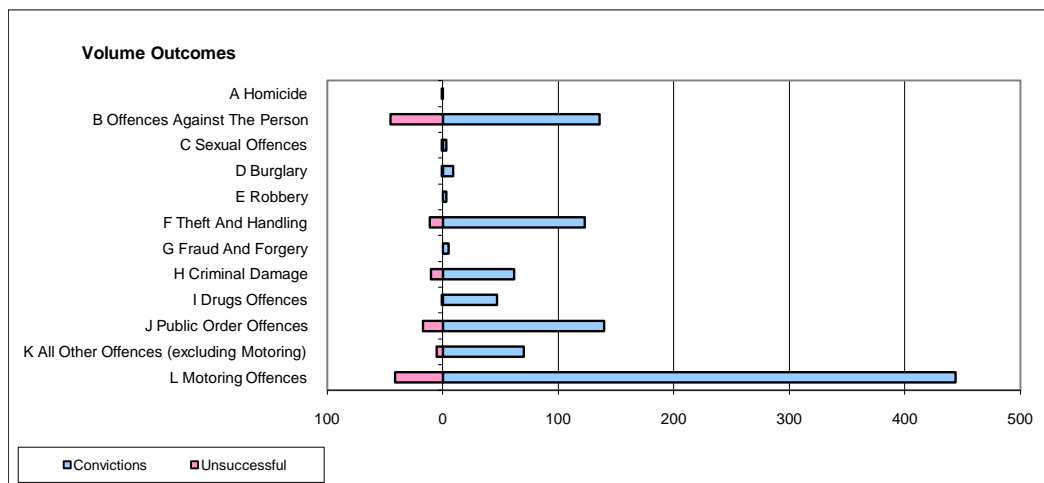
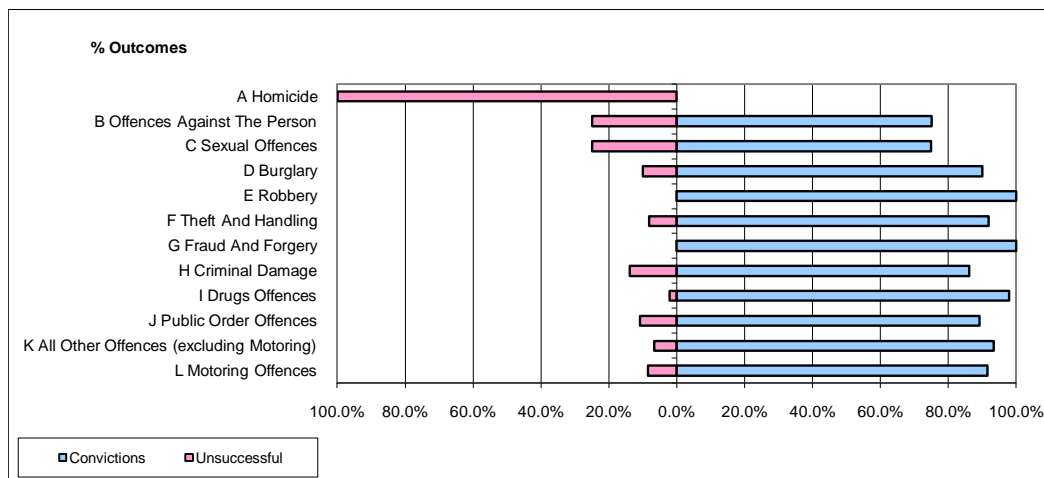


CPS OUTCOMES BY PRINCIPAL OFFENCE CATEGORY

January 2010

P29-NorthWales



	Convictions		Unsuccessful	
	Number of Defendants	%	Number of Defendants	%
A Homicide	0	0.0%	1	100.0%
B Offences Against The Person	136	75.1%	45	24.9%
C Sexual Offences	3	75.0%	1	25.0%
D Burglary	9	90.0%	1	10.0%
E Robbery	3	100.0%	0	0.0%
F Theft And Handling	123	91.8%	11	8.2%
G Fraud And Forgery	5	100.0%	0	0.0%
H Criminal Damage	62	86.1%	10	13.9%
I Drugs Offences	47	97.9%	1	2.1%
J Public Order Offences	140	89.2%	17	10.8%
K All Other Offences (excluding Motoring)	70	93.3%	5	6.7%
L Motoring Offences	444	91.5%	41	8.5%
Admin Finalisations	0	0.0%	6	100.0%
TOTAL	1,042	88.2%	139	11.8%