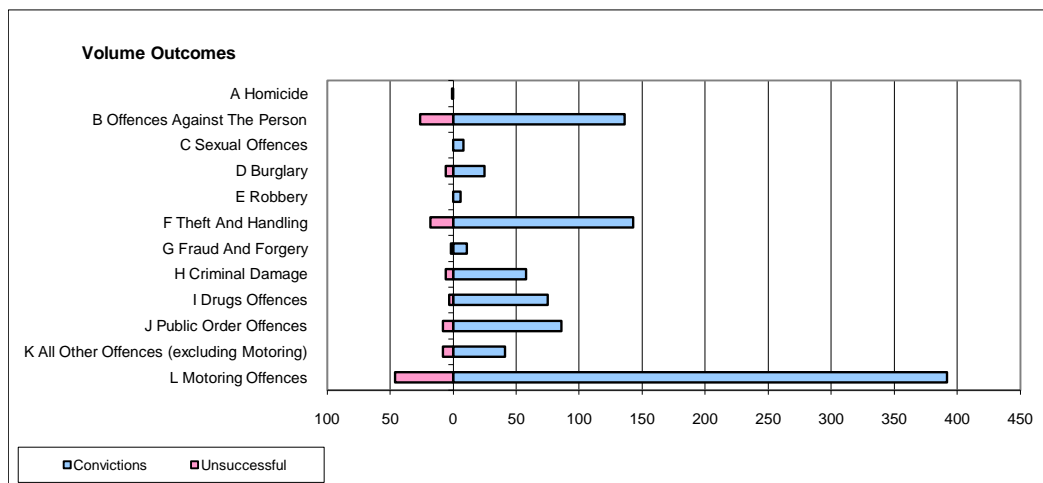
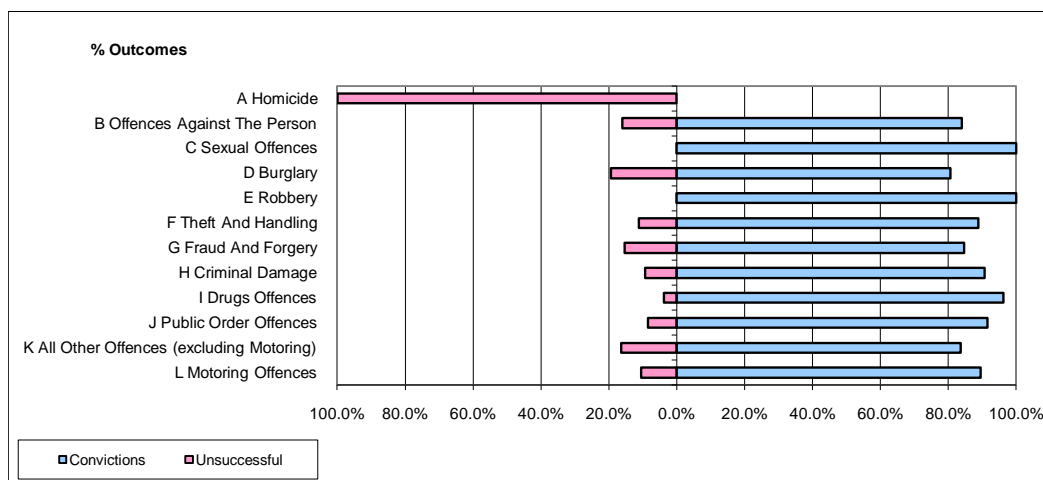


**CPS OUTCOMES BY PRINCIPAL OFFENCE CATEGORY**

January 2010

**P26-Norfolk**



	Convictions		Unsuccessful	
	Number of Defendants	%	Number of Defendants	%
<b>A Homicide</b>	<b>0</b>	<b>0.0%</b>	<b>1</b>	<b>100.0%</b>
<b>B Offences Against The Person</b>	<b>136</b>	<b>84.0%</b>	<b>26</b>	<b>16.0%</b>
<b>C Sexual Offences</b>	<b>8</b>	<b>100.0%</b>	<b>0</b>	<b>0.0%</b>
<b>D Burglary</b>	<b>25</b>	<b>80.6%</b>	<b>6</b>	<b>19.4%</b>
<b>E Robbery</b>	<b>6</b>	<b>100.0%</b>	<b>0</b>	<b>0.0%</b>
<b>F Theft And Handling</b>	<b>143</b>	<b>88.8%</b>	<b>18</b>	<b>11.2%</b>
<b>G Fraud And Forgery</b>	<b>11</b>	<b>84.6%</b>	<b>2</b>	<b>15.4%</b>
<b>H Criminal Damage</b>	<b>58</b>	<b>90.6%</b>	<b>6</b>	<b>9.4%</b>
<b>I Drugs Offences</b>	<b>75</b>	<b>96.2%</b>	<b>3</b>	<b>3.8%</b>
<b>J Public Order Offences</b>	<b>86</b>	<b>91.5%</b>	<b>8</b>	<b>8.5%</b>
<b>K All Other Offences (excluding Motoring)</b>	<b>41</b>	<b>83.7%</b>	<b>8</b>	<b>16.3%</b>
<b>L Motoring Offences</b>	<b>392</b>	<b>89.5%</b>	<b>46</b>	<b>10.5%</b>
<b>Admin Finalisations</b>	<b>0</b>	<b>0.0%</b>	<b>17</b>	<b>100.0%</b>
<b>TOTAL</b>	<b>981</b>	<b>87.4%</b>	<b>141</b>	<b>12.6%</b>