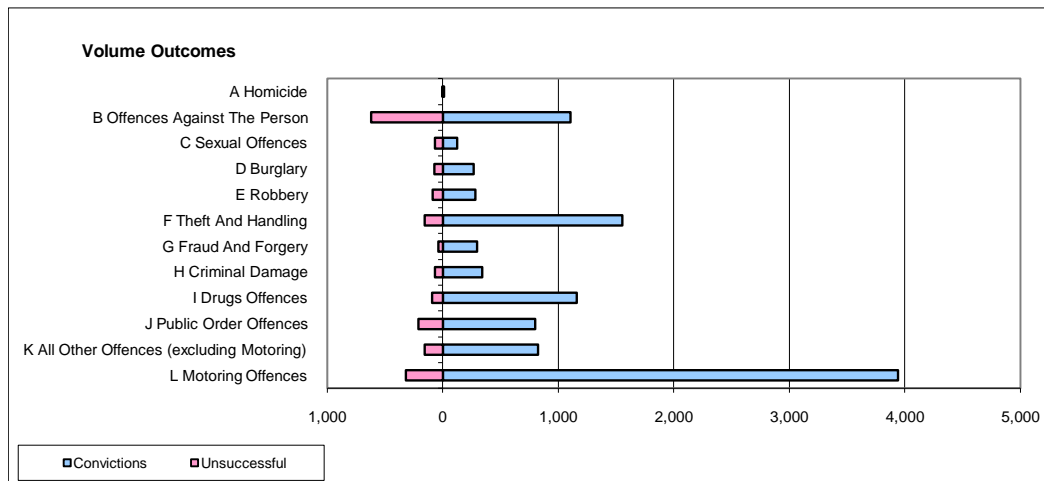
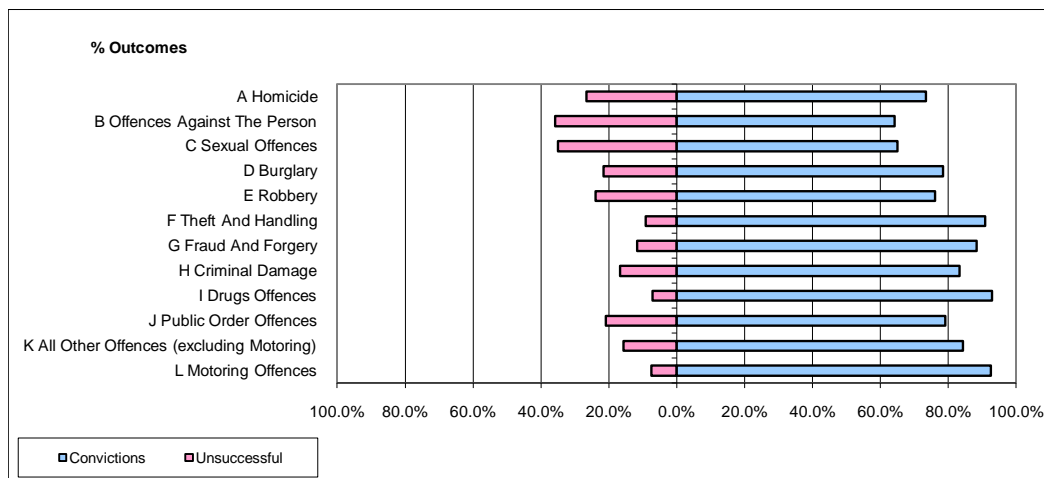


CPS OUTCOMES BY PRINCIPAL OFFENCE CATEGORY

January 2010

P25-Metropolitan&City



	Convictions		Unsuccessful	
	Number of Defendants	%	Number of Defendants	%
A Homicide	11	73.3%	4	26.7%
B Offences Against The Person	1,109	64.1%	621	35.9%
C Sexual Offences	126	64.9%	68	35.1%
D Burglary	266	78.5%	73	21.5%
E Robbery	281	76.2%	88	23.8%
F Theft And Handling	1,556	90.9%	156	9.1%
G Fraud And Forgery	297	88.4%	39	11.6%
H Criminal Damage	340	83.3%	68	16.7%
I Drugs Offences	1,162	92.8%	90	7.2%
J Public Order Offences	799	79.1%	211	20.9%
K All Other Offences (excluding Motoring)	825	84.3%	154	15.7%
L Motoring Offences	3,942	92.6%	317	7.4%
Admin Finalisations	0	0.0%	273	100.0%
TOTAL	10,714	83.2%	2,162	16.8%