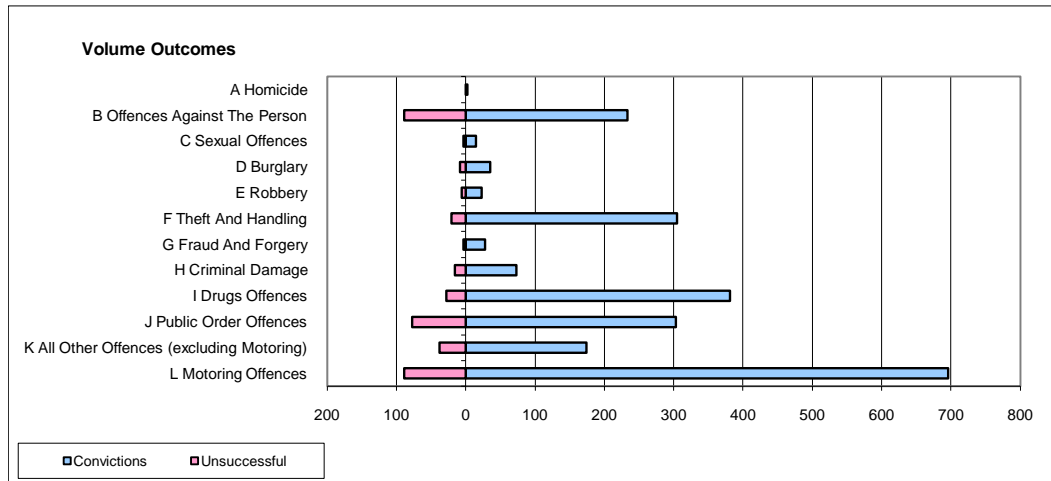
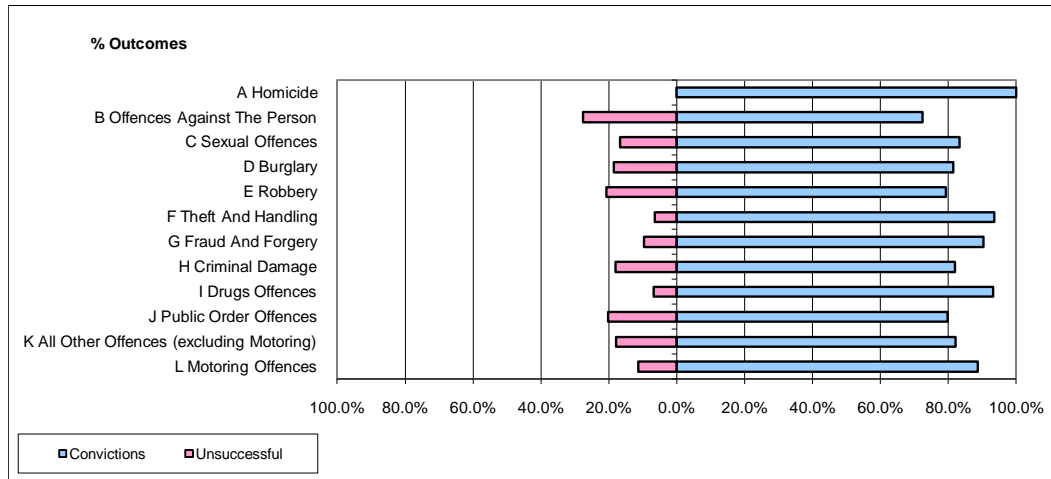


CPS OUTCOMES BY PRINCIPAL OFFENCE CATEGORY

January 2010

P24-Merseyside



	Convictions		Unsuccessful	
	Number of Defendants	%	Number of Defendants	%
A Homicide	2	100.0%	0	0.0%
B Offences Against The Person	233	72.4%	89	27.6%
C Sexual Offences	15	83.3%	3	16.7%
D Burglary	35	81.4%	8	18.6%
E Robbery	23	79.3%	6	20.7%
F Theft And Handling	305	93.6%	21	6.4%
G Fraud And Forgery	28	90.3%	3	9.7%
H Criminal Damage	73	82.0%	16	18.0%
I Drugs Offences	381	93.2%	28	6.8%
J Public Order Offences	303	79.7%	77	20.3%
K All Other Offences (excluding Motoring)	174	82.1%	38	17.9%
L Motoring Offences	696	88.7%	89	11.3%
Admin Finalisations	0	0.0%	26	100.0%
TOTAL	2,268	84.9%	404	15.1%