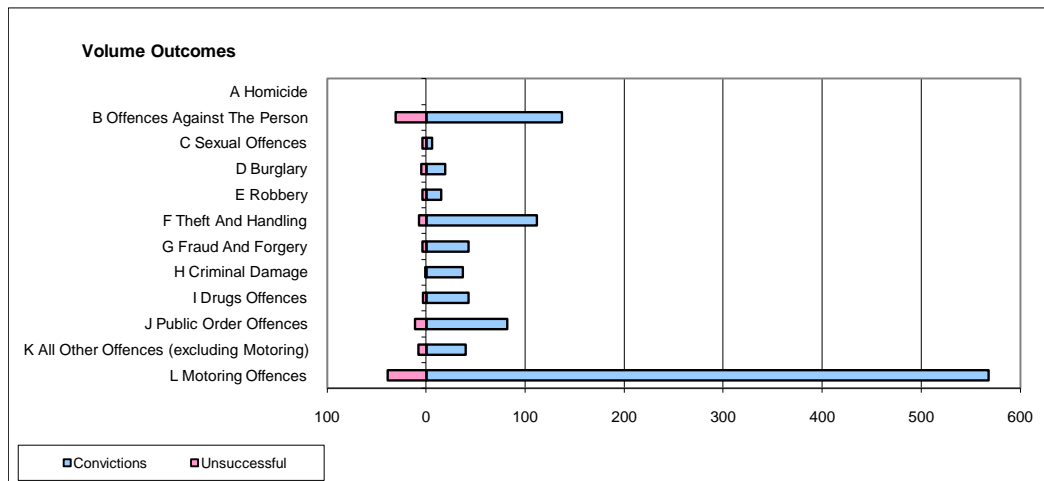
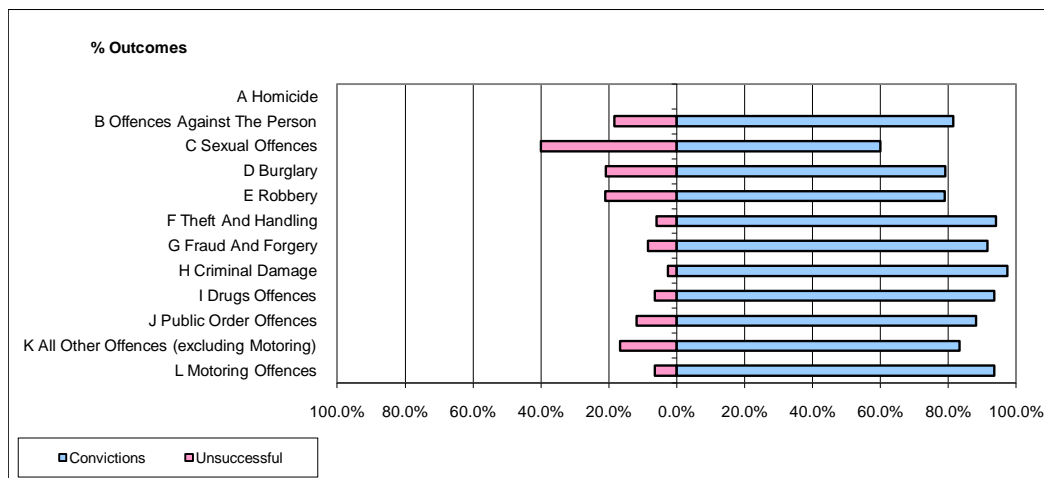


**CPS OUTCOMES BY PRINCIPAL OFFENCE CATEGORY**

January 2010

**P22-Leicestershire**



	Convictions		Unsuccessful	
	Number of Defendants	%	Number of Defendants	%
<b>A Homicide</b>	<b>0</b>	<b>0</b>	<b>0</b>	<b>0</b>
<b>B Offences Against The Person</b>	<b>137</b>	<b>81.5%</b>	<b>31</b>	<b>18.5%</b>
<b>C Sexual Offences</b>	<b>6</b>	<b>60.0%</b>	<b>4</b>	<b>40.0%</b>
<b>D Burglary</b>	<b>19</b>	<b>79.2%</b>	<b>5</b>	<b>20.8%</b>
<b>E Robbery</b>	<b>15</b>	<b>78.9%</b>	<b>4</b>	<b>21.1%</b>
<b>F Theft And Handling</b>	<b>112</b>	<b>94.1%</b>	<b>7</b>	<b>5.9%</b>
<b>G Fraud And Forgery</b>	<b>43</b>	<b>91.5%</b>	<b>4</b>	<b>8.5%</b>
<b>H Criminal Damage</b>	<b>37</b>	<b>97.4%</b>	<b>1</b>	<b>2.6%</b>
<b>I Drugs Offences</b>	<b>43</b>	<b>93.5%</b>	<b>3</b>	<b>6.5%</b>
<b>J Public Order Offences</b>	<b>82</b>	<b>88.2%</b>	<b>11</b>	<b>11.8%</b>
<b>K All Other Offences (excluding Motoring)</b>	<b>40</b>	<b>83.3%</b>	<b>8</b>	<b>16.7%</b>
<b>L Motoring Offences</b>	<b>568</b>	<b>93.6%</b>	<b>39</b>	<b>6.4%</b>
<b>Admin Finalisations</b>	<b>0</b>	<b>0.0%</b>	<b>21</b>	<b>100.0%</b>
<b>TOTAL</b>	<b>1,102</b>	<b>88.9%</b>	<b>138</b>	<b>11.1%</b>