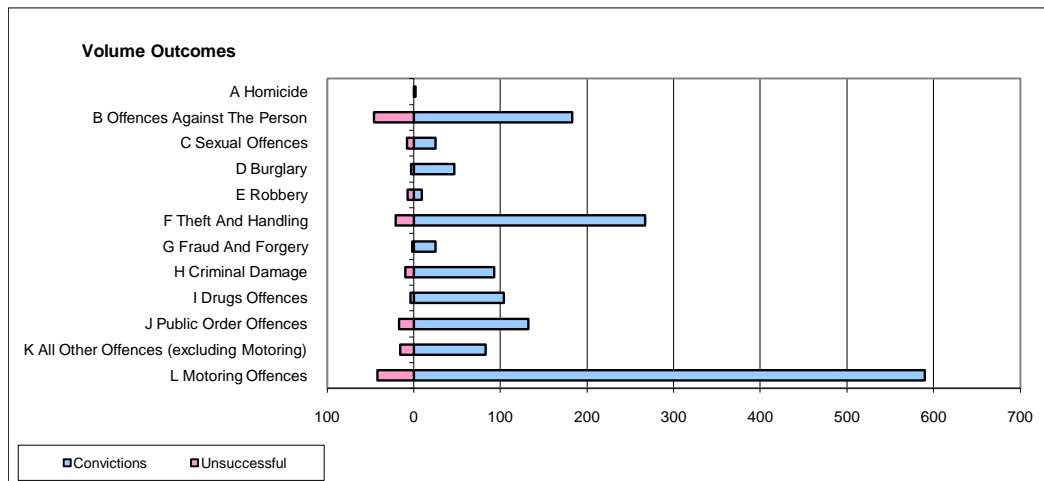
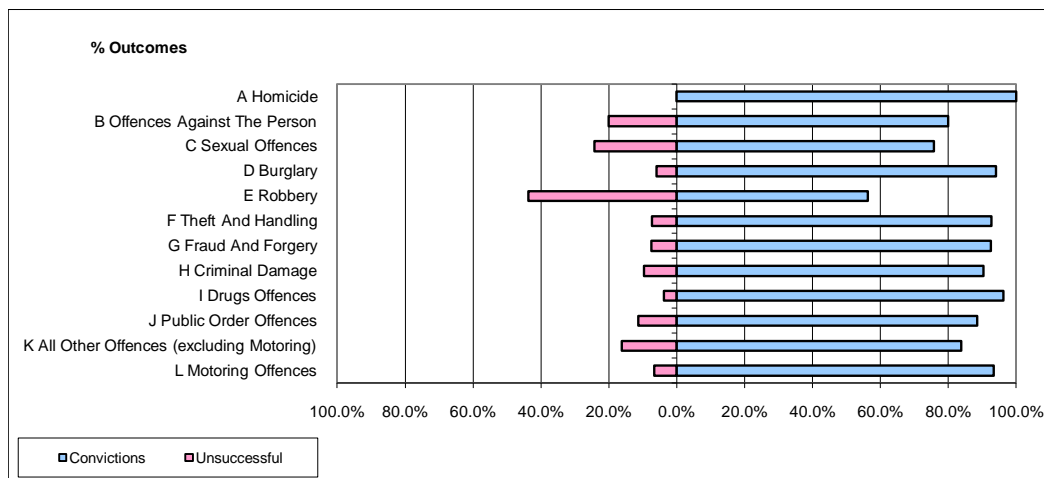


**CPS OUTCOMES BY PRINCIPAL OFFENCE CATEGORY**

January 2010

**P20-Kent**



	Convictions		Unsuccessful	
	Number of Defendants	%	Number of Defendants	%
<b>A Homicide</b>	<b>2</b>	<b>100.0%</b>	<b>0</b>	<b>0.0%</b>
<b>B Offences Against The Person</b>	<b>183</b>	<b>79.9%</b>	<b>46</b>	<b>20.1%</b>
<b>C Sexual Offences</b>	<b>25</b>	<b>75.8%</b>	<b>8</b>	<b>24.2%</b>
<b>D Burglary</b>	<b>47</b>	<b>94.0%</b>	<b>3</b>	<b>6.0%</b>
<b>E Robbery</b>	<b>9</b>	<b>56.3%</b>	<b>7</b>	<b>43.8%</b>
<b>F Theft And Handling</b>	<b>267</b>	<b>92.7%</b>	<b>21</b>	<b>7.3%</b>
<b>G Fraud And Forgery</b>	<b>25</b>	<b>92.6%</b>	<b>2</b>	<b>7.4%</b>
<b>H Criminal Damage</b>	<b>93</b>	<b>90.3%</b>	<b>10</b>	<b>9.7%</b>
<b>I Drugs Offences</b>	<b>104</b>	<b>96.3%</b>	<b>4</b>	<b>3.7%</b>
<b>J Public Order Offences</b>	<b>132</b>	<b>88.6%</b>	<b>17</b>	<b>11.4%</b>
<b>K All Other Offences (excluding Motoring)</b>	<b>83</b>	<b>83.8%</b>	<b>16</b>	<b>16.2%</b>
<b>L Motoring Offences</b>	<b>590</b>	<b>93.4%</b>	<b>42</b>	<b>6.6%</b>
<b>Admin Finalisations</b>	<b>0</b>	<b>0.0%</b>	<b>18</b>	<b>100.0%</b>
<b>TOTAL</b>	<b>1,560</b>	<b>88.9%</b>	<b>194</b>	<b>11.1%</b>